

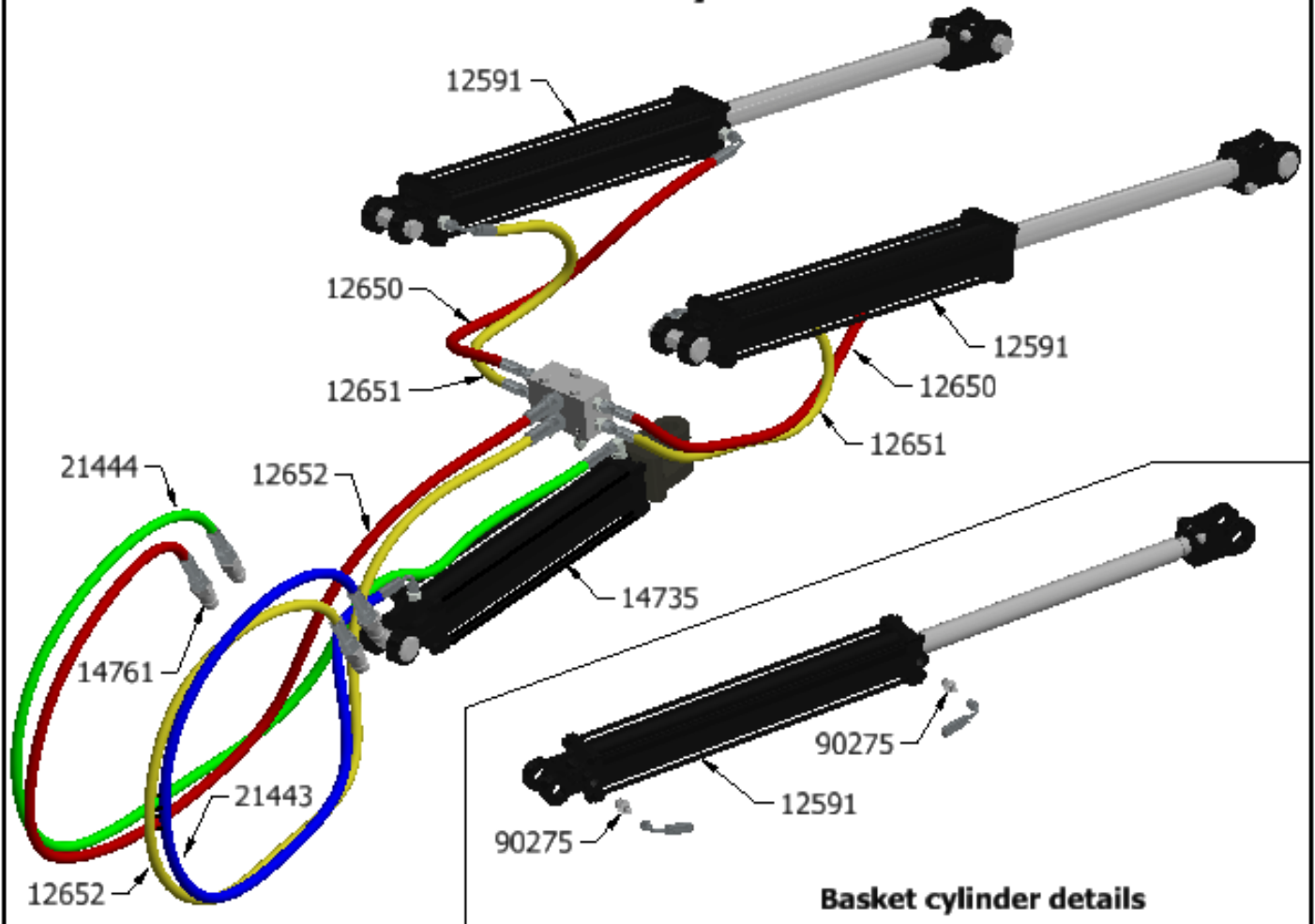


Quality Built Since 1973

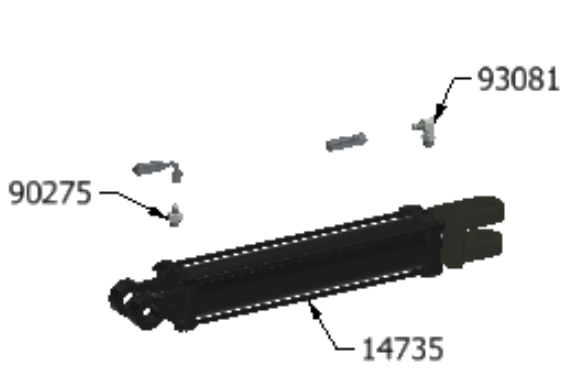
PIVOT TRACK CLOSER
And
ATTACHMENTS



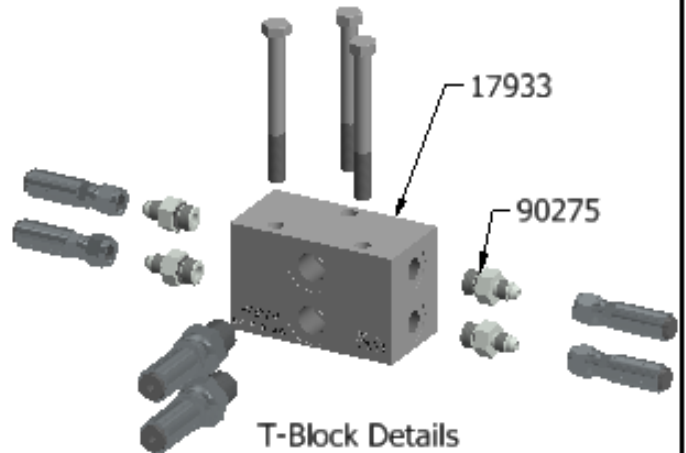
Standard Hydraulics



Basket cylinder details



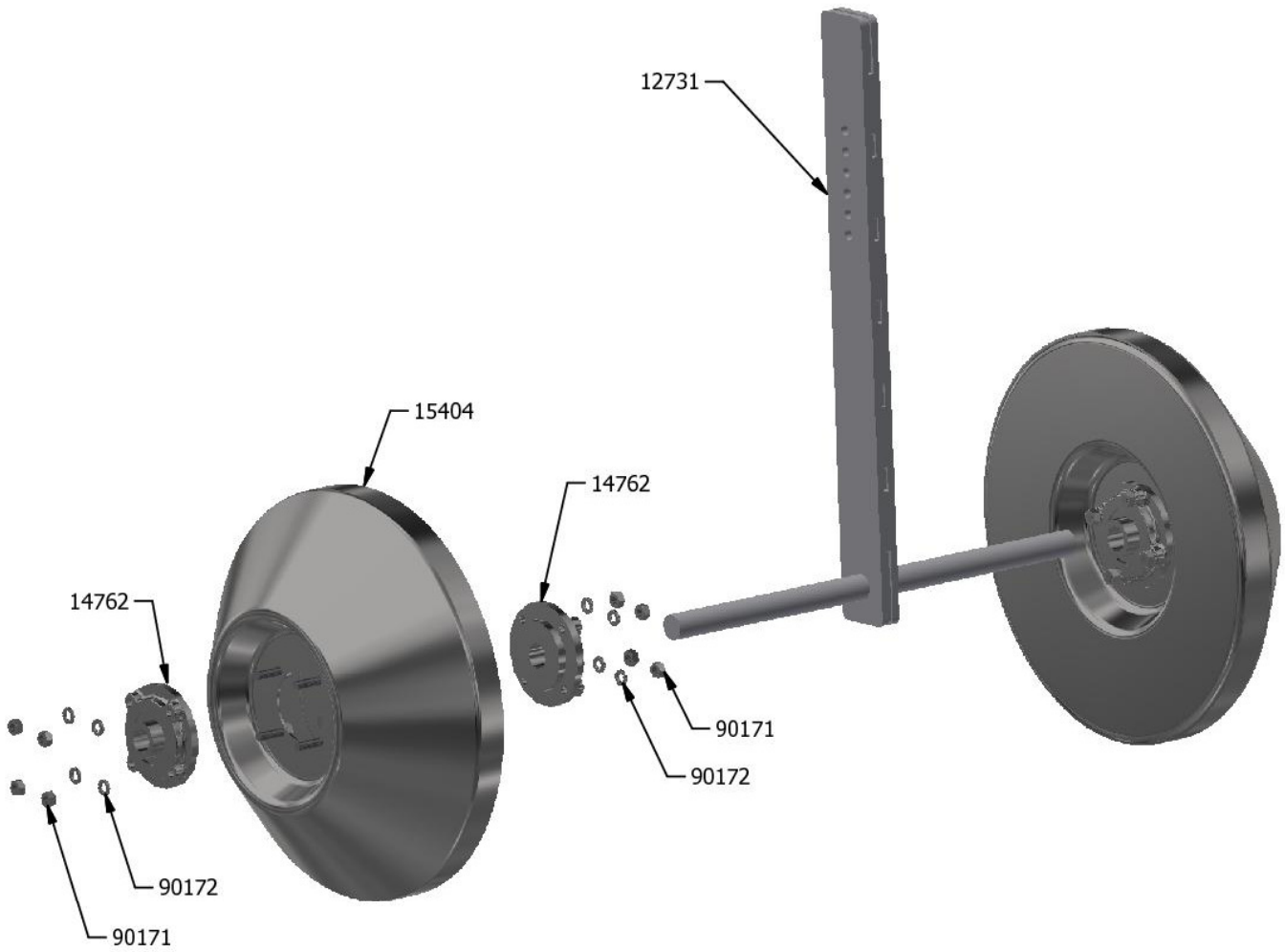
Wing Pitch Cylinder



T-Block Details

TABLE			TABLE		
PART #	DESCRIPTION	QTY	PART #	DESCRIPTION	QTY
14761	1/2" Oring Pioneer Poppet	4	12650	1/4" - 4 JIC to 4 JIC 90 x 35-1/8	2
21444	1/4" X 8MBOring-4 JIC female x 84	1	12651	1/4" - 4 JIC to 4 JIC 90 x 23-3/8	2
21443	1/4"x8MBOring-4JICfemale90 x 70	1	12591	2-1/2" x 18" Hydraulic Cylinder	2
12652	1/4"x8MBOring-8MBOring x 82	2	14735	2-1/2" x 12" Hydraulic Cylinder	1
17933	Hydraulic T- Block	1	93081	6 MBOring to 4 JIC Male 90 Adapter	1
90275	6 MBOring to 4 JIC Male Adapter	9			

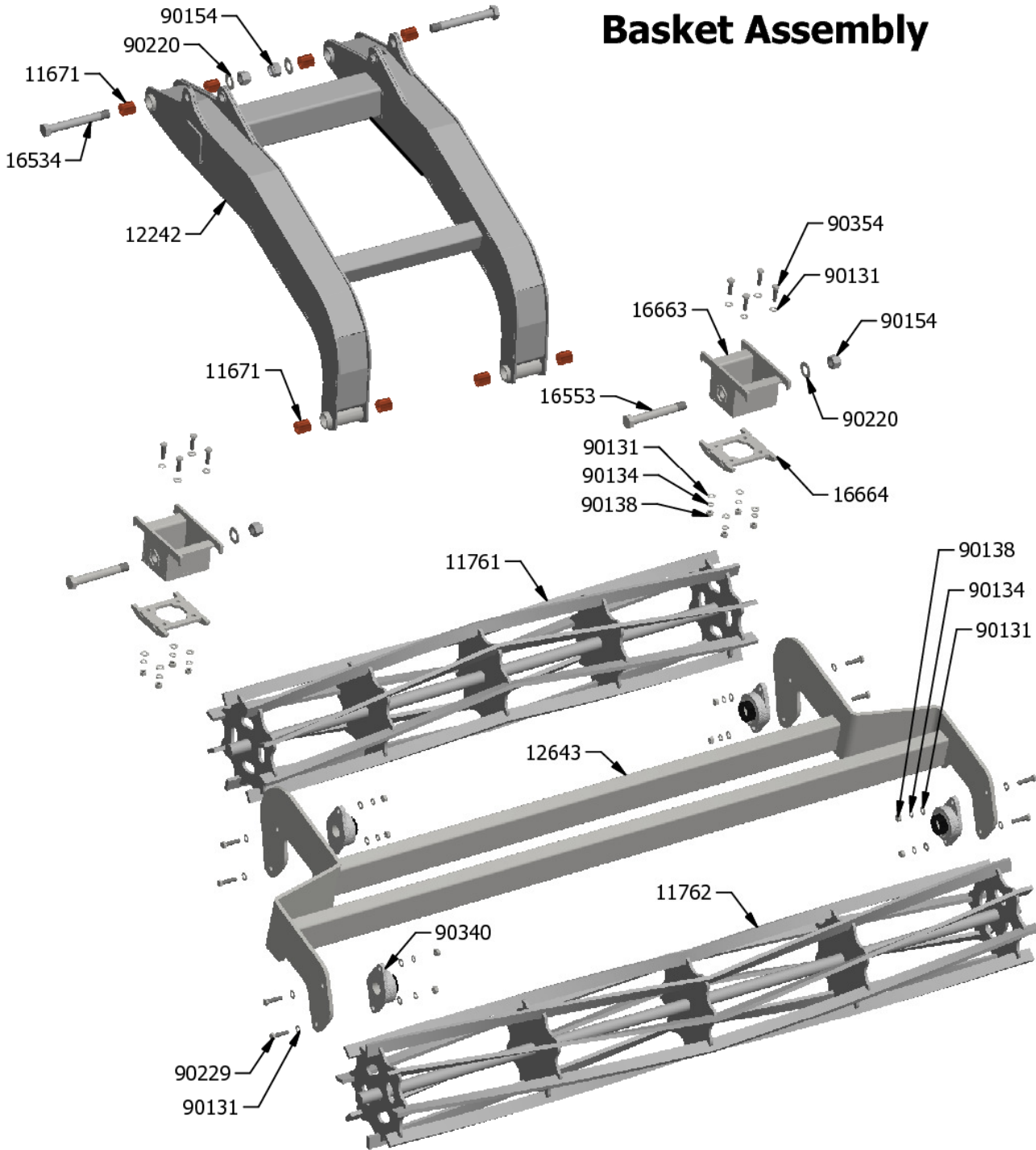
15824 Guide wheels



PARTS LIST

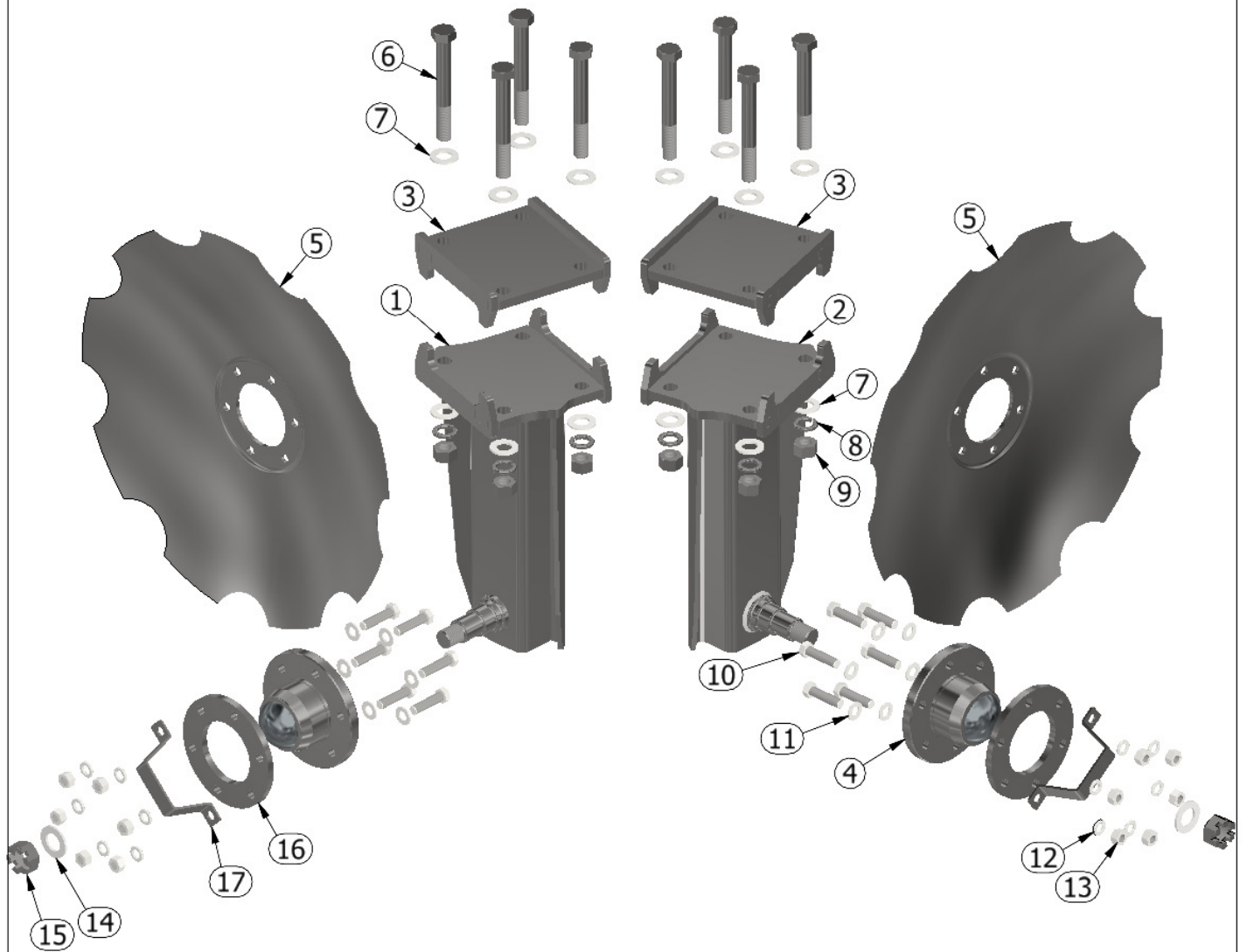
QTY	PART #	DESCRIPTION
2	15404	guide wheel weldment
4	14762	4 bolt PFC4-35-1.25S
16	90171	7/16" Nut
16	90172	7/16" Lock Washer
1	12731	Guide Wheel Arm

Basket Assembly



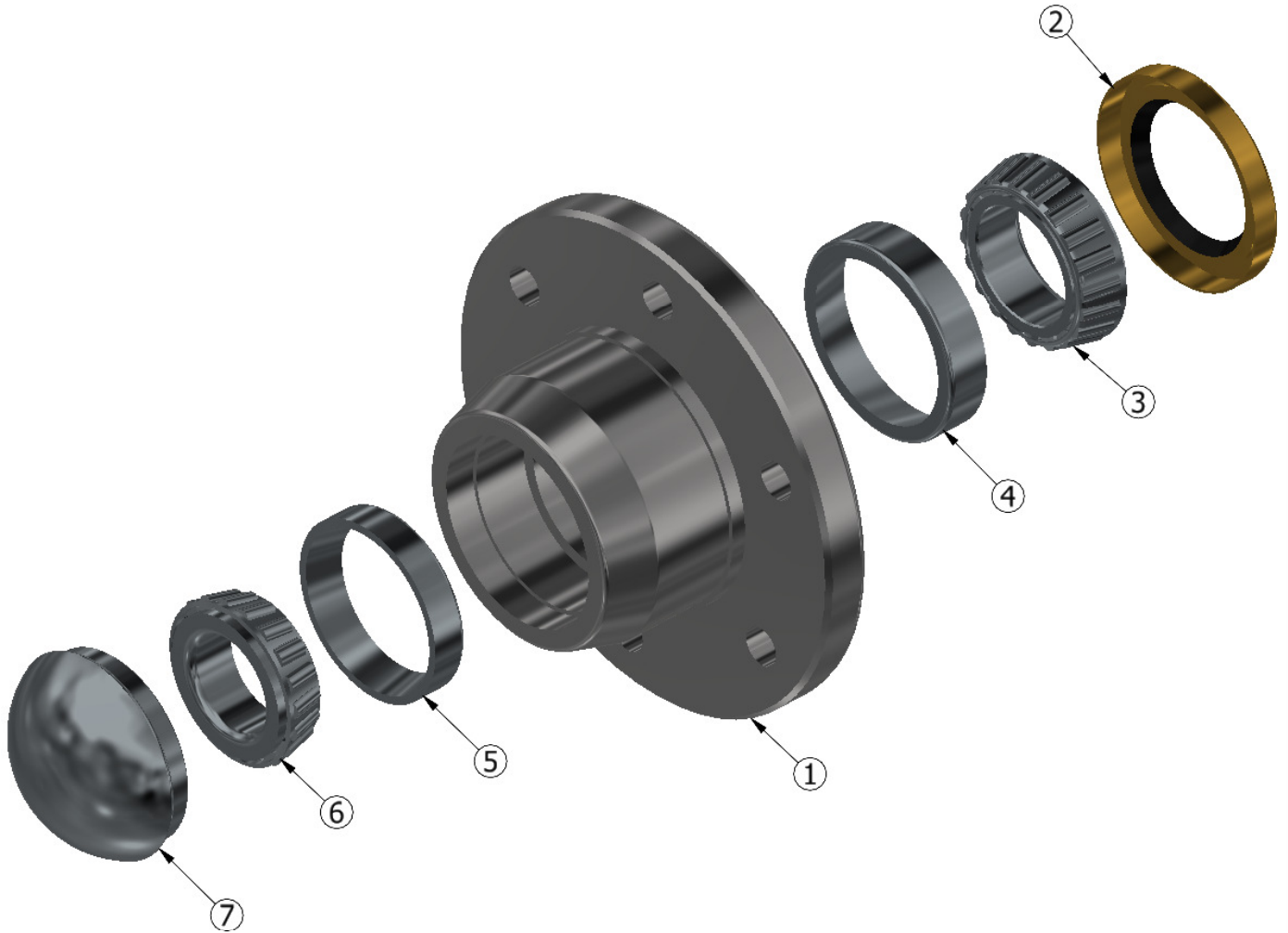
Parts			Parts		
Part #	Description	Qty	Part #	Description	Qty
12242	Basket Arm	1	16533	1" x 9" Cut to 7-3/8"	2
12643	Basket Frame	1	90220	1" washer	4
11761	6' Roller Basket	1	90154	1" Nylock Nut	4
11762	7'6" Roller Basket	1	90354	1/2" x 1-3/4"	8
16663	Clamp Top	2	90229	1/2" x 2"	8
16664	Clamp Bottom	2	90131	1/2" Flat washer	32
11671	Bronze Bushing	8	90134	1/2" Lock Washer	16
90340	1-1/2" 2 bolt Bearing	4	90138	1/2" Nut	16
16534	1" x 9-1/2" Cut to 6-3/8"				

Front Disc legs



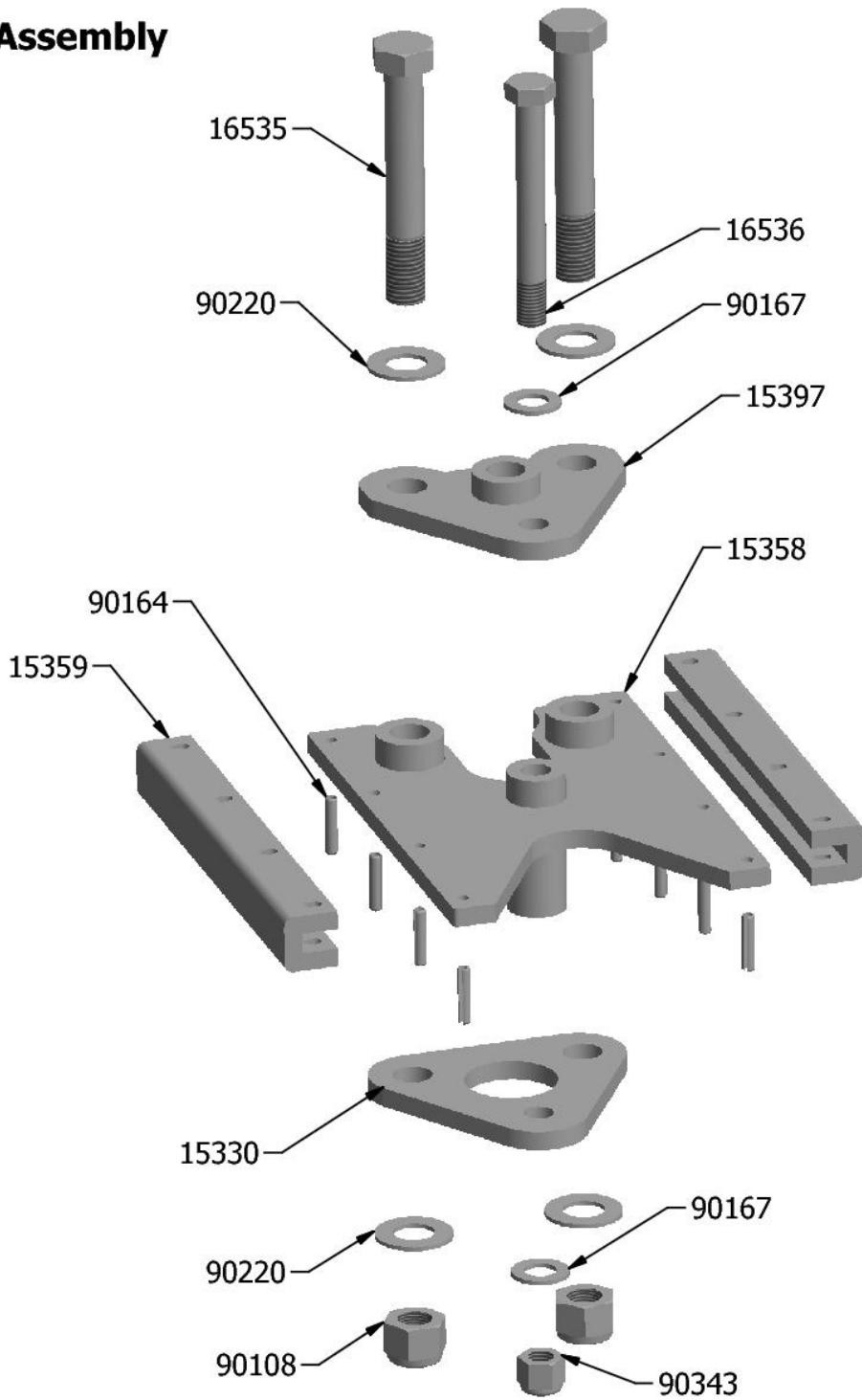
PARTS LIST				PARTS LIST			
ITEM	QTY	PART #	DESCRIPTION	ITEM	QTY	PART #	DESCRIPTION
1	1	12576	Leg Weldment LH	10	12	90229	1/2" x 2" Bolt
2	1	12575	Leg Weldment RH	11	12	90131	1/2" Flat Washer
3	2	12574	leg cap weldment	12	12	90134	1/2" Lock Washer
4	2	22384	Front Hub Assembly	13	12	90138	1/2" nut
5	2	15401	22" Notched Disc	14	2	90931	spindle washer
6	8	90162	3/4" x 6" Bolt	15	2	90146	Castle Nut (Transport)
7	16	90167	Flat Washer 3/4"	16	2	15491	pvt closer outer hub ring
8	8	90158	3/4" Lock Washer	17	2	12747b	ptc disc dust cap guard
9	8	90160	3/4" nut				

22384 Hub Assembly



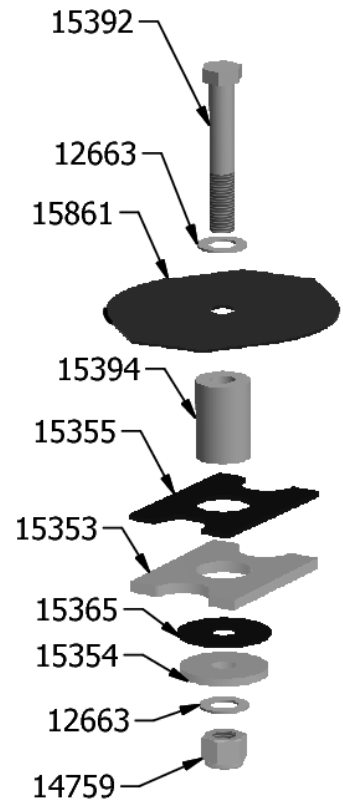
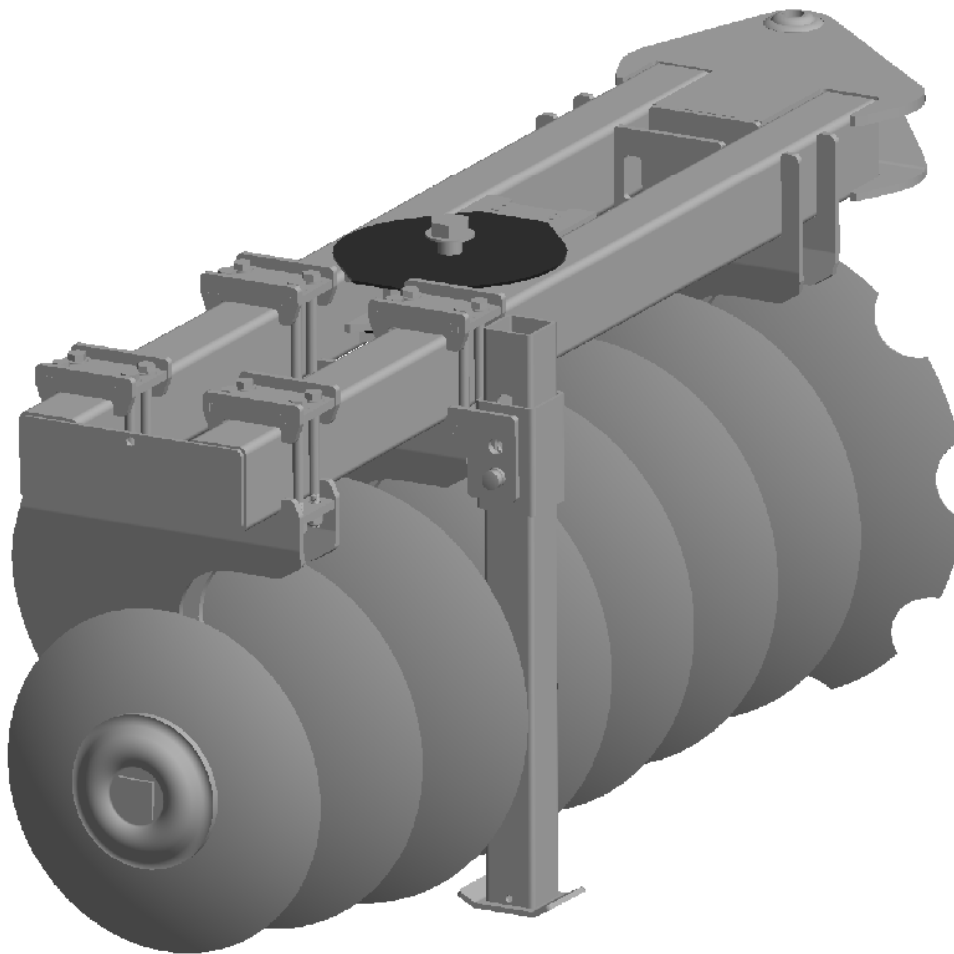
PARTS LIST				PARTS LIST			
ITEM	QTY	PART #	DESCRIPTION	ITEM	QTY	PART #	DESCRIPTION
1	1	12677	Disc Hub Weldment	5	1	10614	Outer Race (transport)
2	1	10616	Dust Seal (transport)	6	1	10613	Outer Bearing (transport)
3	1	10584	Inner Bearing (transport)	7	1	10617	Dust Cap (transport)
4	1	10587	Inner Race (transport)				

Slide Assembly

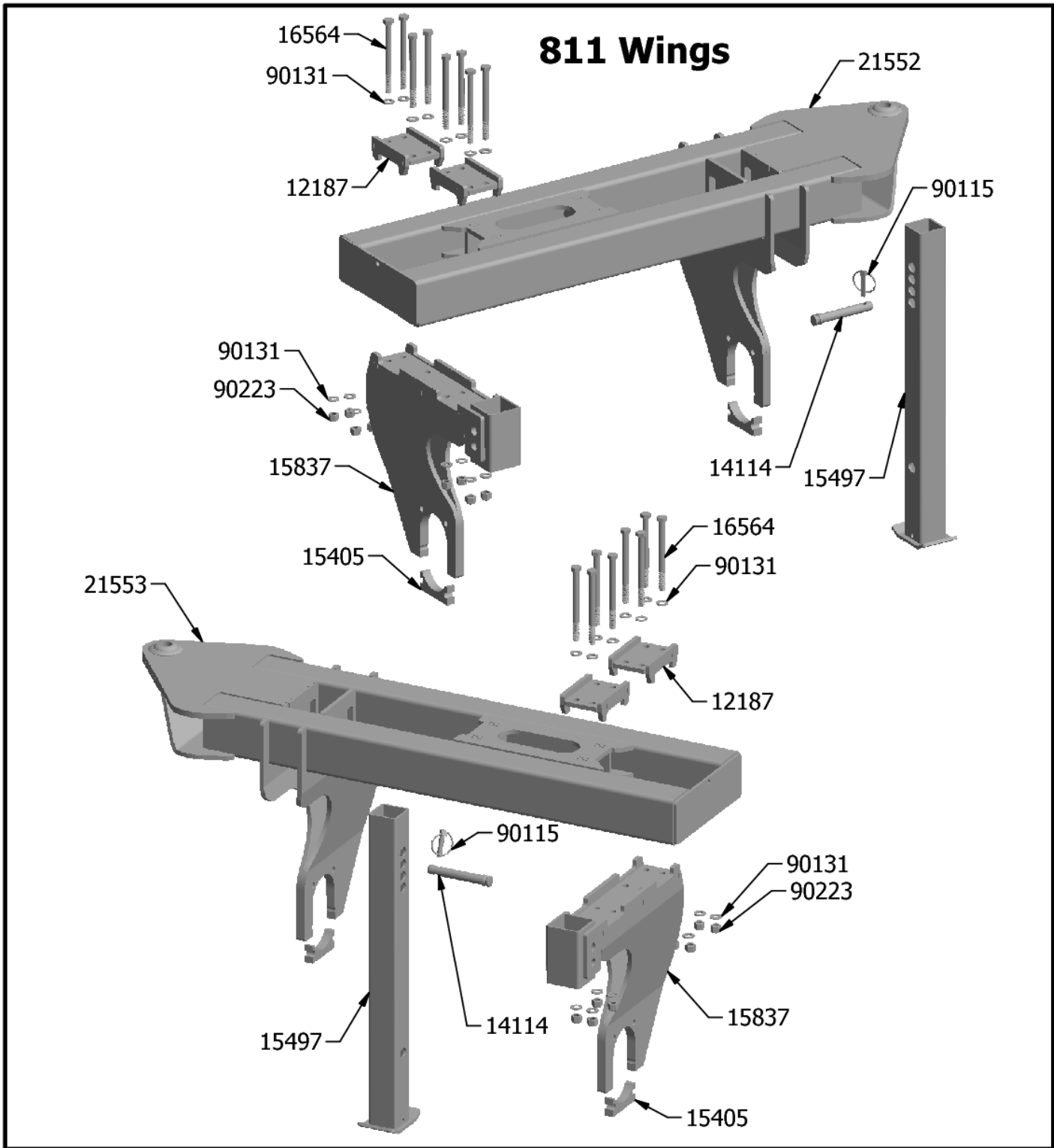


Parts			Parts		
Part #	Description	Qty	Part #	Description	Qty
15397	Cylinder Mount Plate	1	15536	3/4" x 7-1/2" Cut to 5-7/8"	1
15358	Slide Plate	1	90167	3/4" Flat Washer	2
15359	Black UHMW Plastic Slides	2	90164	5/16" x 1-1/2" Roll Pin	8
15330	Bottom Slide plate	1	90108	1" Nylock Nut	2
16535	1" x 7-1/2" Cut to 6-1/8"	2	90343	3/4" Nylock Nut	1
90220	1" Flat Washer	4			

Wing Pivot Parts

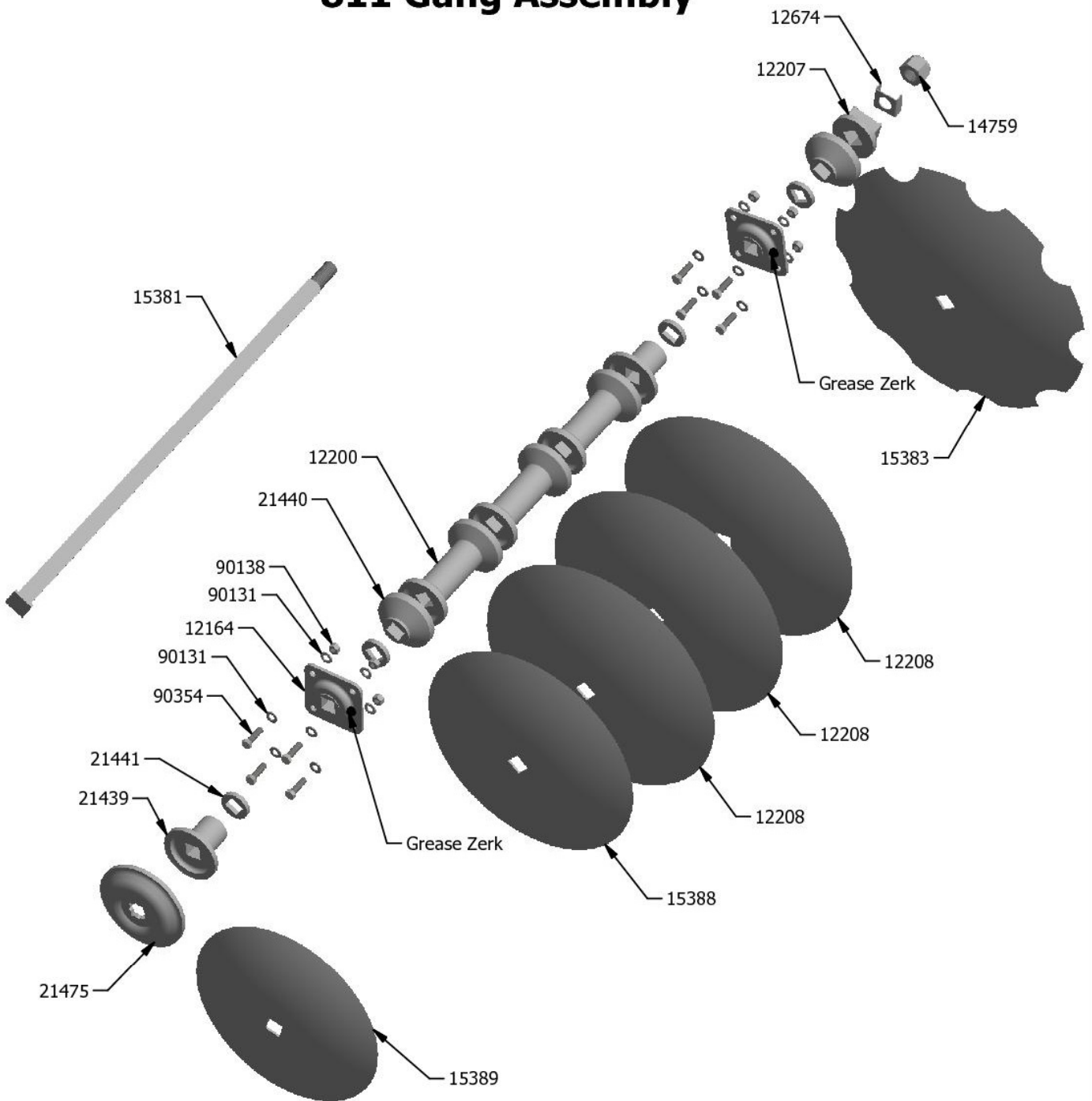


Parts			Parts		
Part #	Description	Qty	Part #	Description	Qty
15392	1-1/8" x 7" Bolt	1	15353	Support Plate	1
12663	1-1/8" Flat washer	2	15365	Plastic Wear Plate	1
15861	Plastic Wear Plate	1	15354	Support Plate	1
15394	Roller Guide	1	14759	1-1/8" Nylock Nut	1
15355	Plastic Slide Plate	1			



Parts			Parts		
Part #	Description	Qty	Part #	Description	Qty
21552	RH Wing	1	14114	Cat 1 Pin	2
21553	LH Wing	1	90115	7/16" x 1-1/2" Lynch Pin	2
15837	Leg Bottom with Stand	2	16564	1/2" x 6" Bolt	16
12187	Leg Top Clamp	4	90131	1/2" Flat Washer	32
15497	Stand Leg	2	90223	1/2" Nylock Nut	16
15405	Bearing Keeper	4			

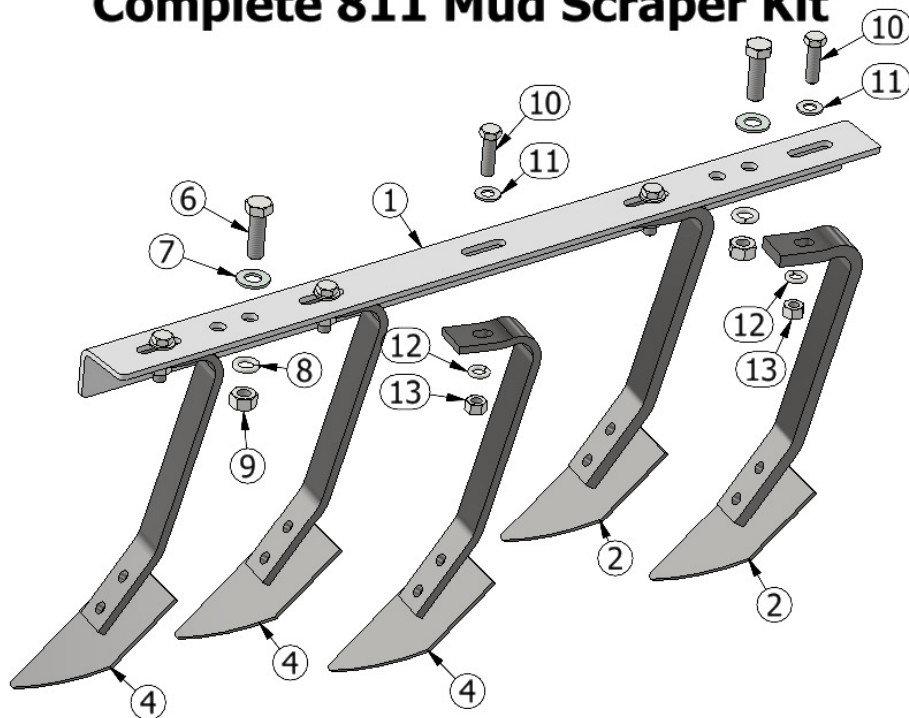
811 Gang Assembly



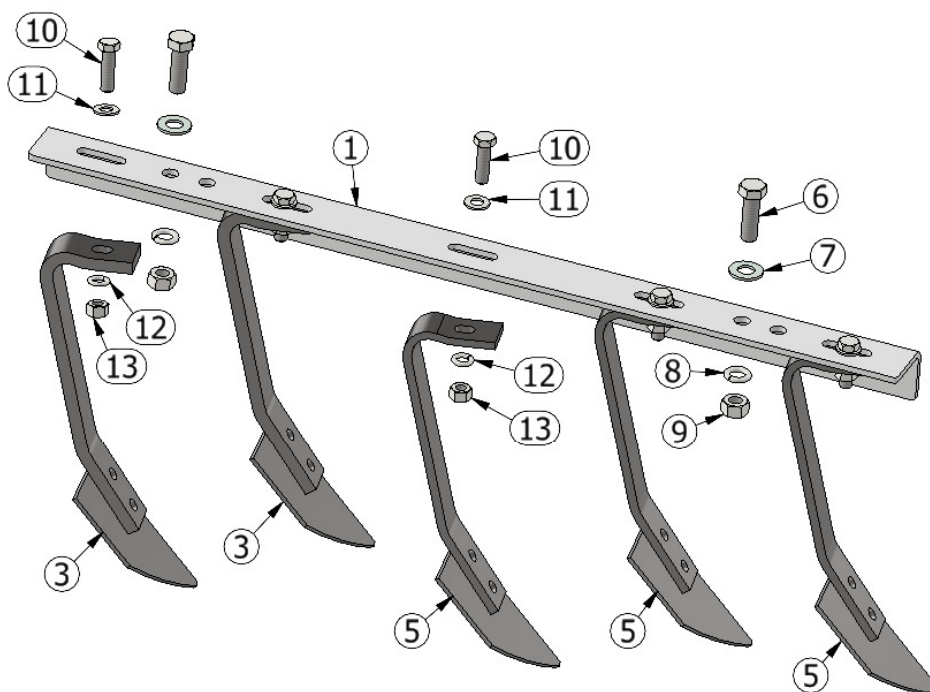
Parts			Parts		
Part #	Description	Qty	Part #	Description	Qty
15383	22" Notched Disc Blade	1	12200	7-1/2" Spool	3
12208	20" Disc Blade	3	15381	1-1/8" Square Axle 41.75"	1
15388	18" Disc Blade	1	90354	1/2" x 1-3/4" Bolt	8
15389	16" Disc Blade	1	90131	1/2" Flat Washer	16
21475	Spring Washer	1	90138	1/2" Nut	8
21439	4" Half Spool	2	12207	Locking Coller	1
21441	Spacer	4	12674	Locking Plate	1
12164	1-1/8" Square Bearing	2	14759	1-1/8" Nylock Nut	1
21440	1-5/8" Half Spool	2			

22547 Complete 811 Mud Scraper Kit

**22551
LH Only Kit**

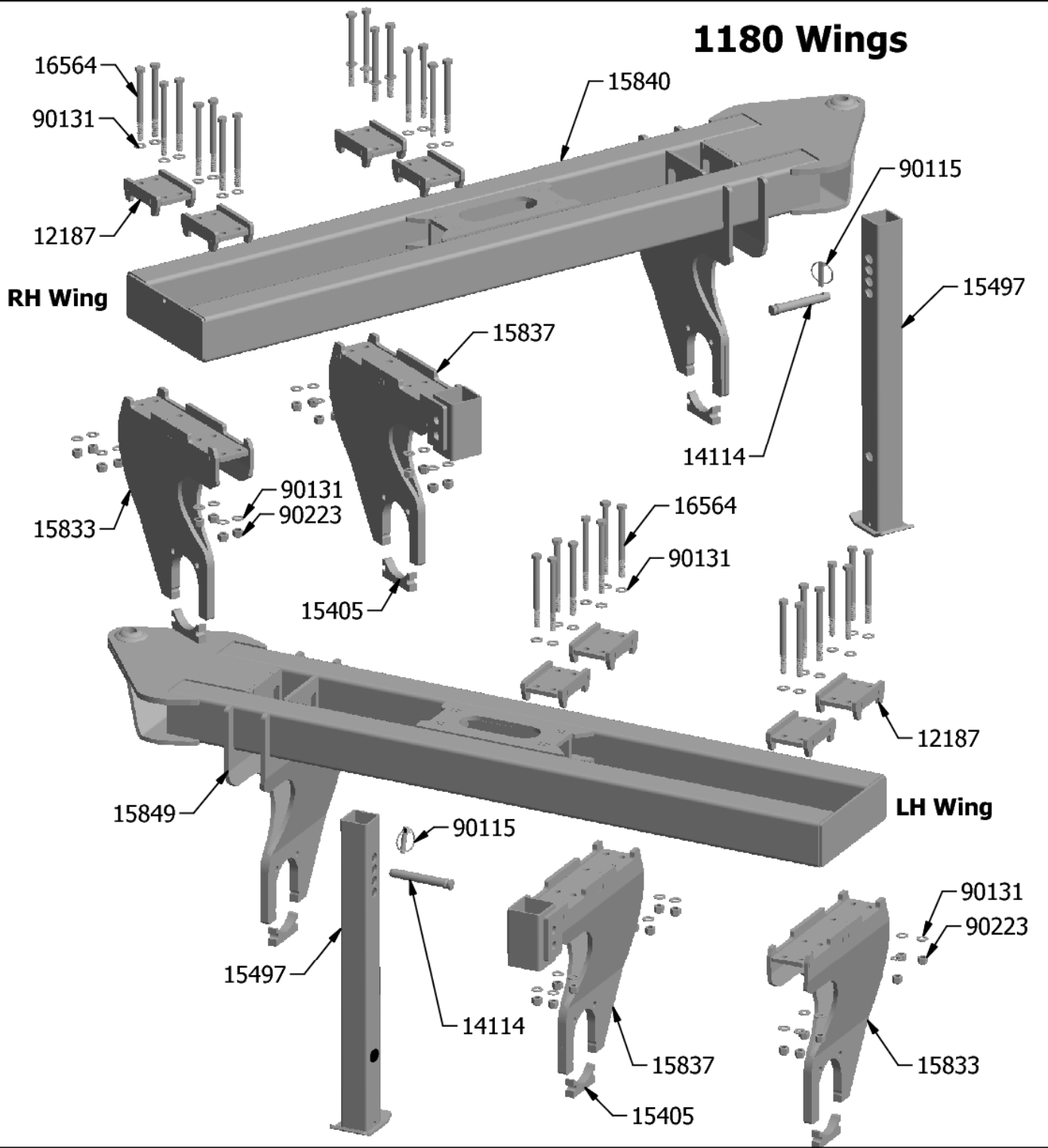


**22552
RH Only Kit**



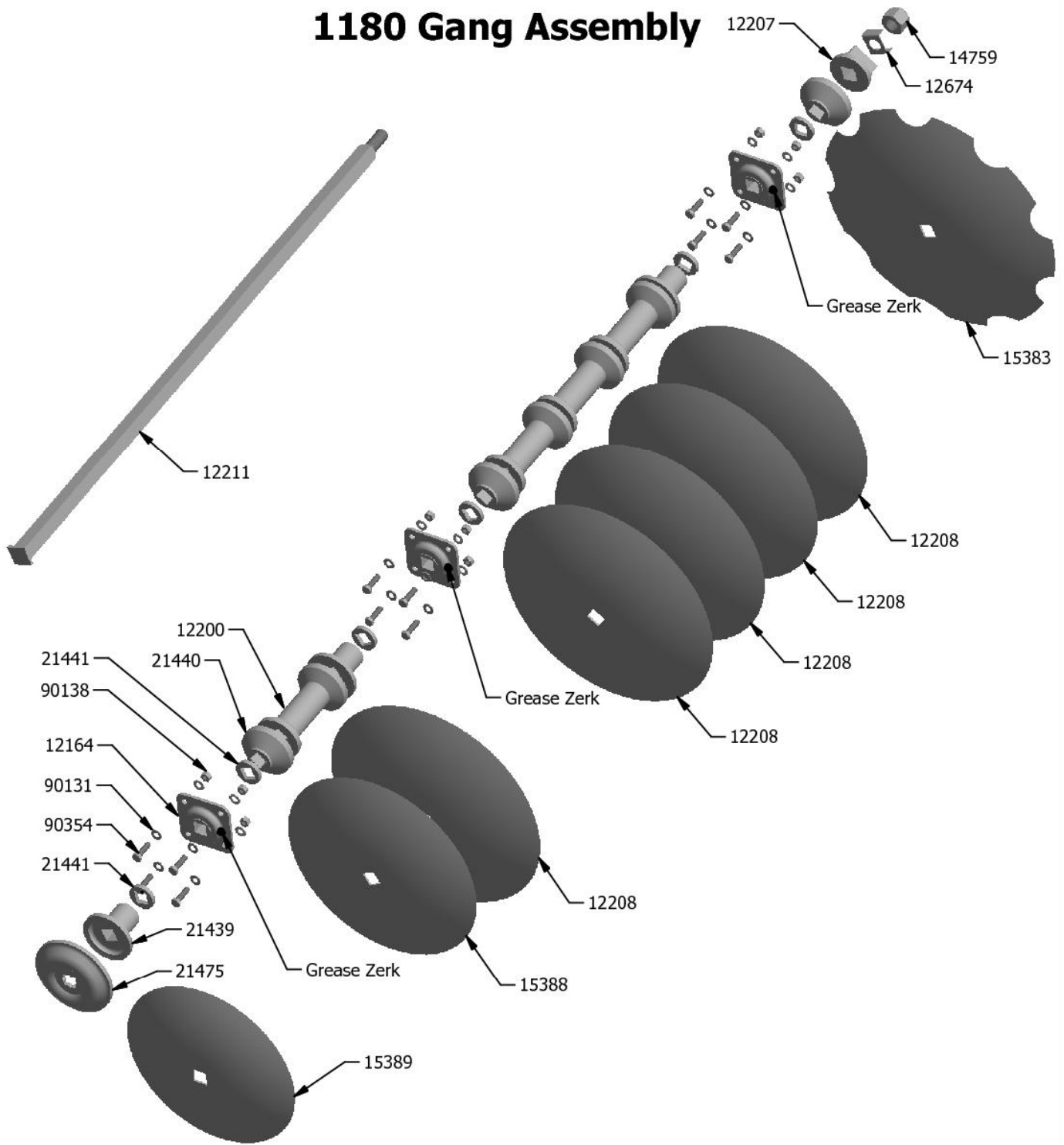
PARTS LIST				PARTS LIST			
ITEM	QTY	PART#	DESCRIPTION	ITEM	QTY	PART#	DESCRIPTION
1	2	22203	811 Scraper Angle	8	4	90123	5/8" Lock Washer
2	2	22563	Heavy Mud Scraper LH	9	4	90137	5/8" Nut
3	2	22566	Heavy Mud Scraper RH	10	10	90354	1/2" x 1-3/4" Bolt
4	3	22569	Mud Scraper LH	11	10	90131	1/2" Flat Washer
5	3	22570	Mud Scraper RH	12	10	90134	1/2" Lock Washer
6	4	90161	5/8" x 2" Bolt	13	10	90138	1/2" nut
7	4	90124	5/8" Flat Washer				

1180 Wings



Parts			Parts		
Part #	Description	Qty	Part #	Description	Qty
15840	RH Wing - 1180	1	16564	1/2" x 6" Bolt	32
15849	LH Wing - 1180	1	90131	1/2" Washer	64
15837	Leg Bottom with stand	2	90223	1/2" Nylock Nut	32
15833	Leg Bottom	2	14114	Cat 1 Pin	2
12187	Leg Top Clamp	8	90115	7/16" x 1-1/2" Lynch Pin	2
15497	Stand Leg	2	15405	Bearing Keeper	6

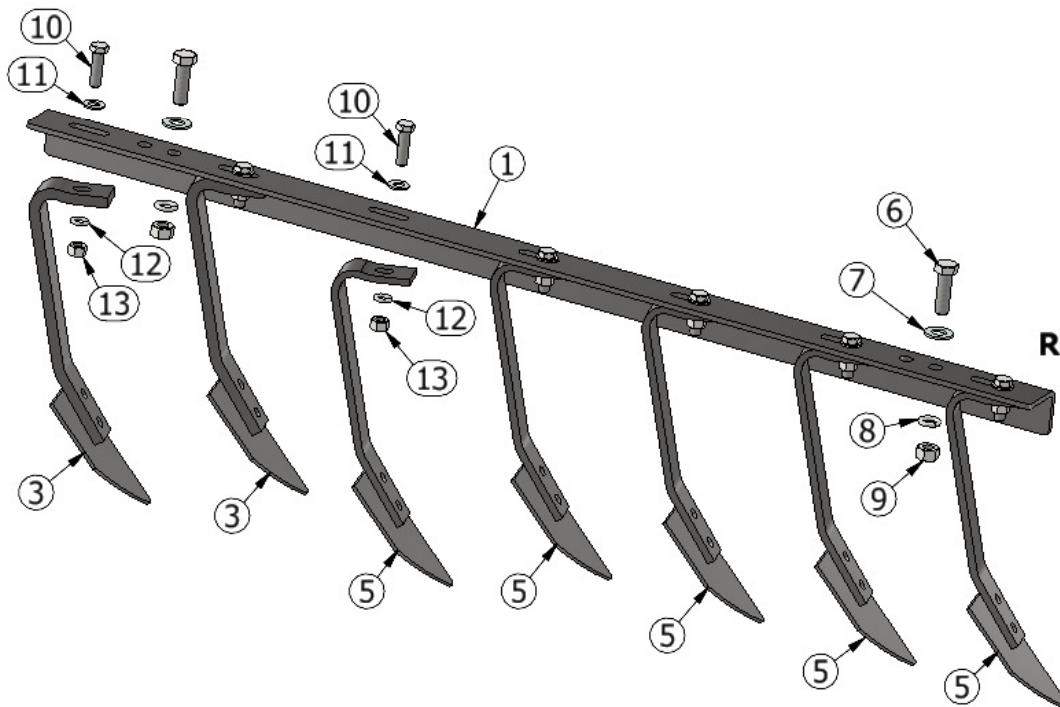
1180 Gang Assembly



Parts			Parts		
Part #	Description	Qty	Part #	Description	Qty
15383	22" Notched Disc Blade	1	12200	7-1/2" Spool	4
12208	20" Disc Blade	5	12211	1-1/8" Square Axle 57.6"	1
15388	18" Disc Blade	1	90354	1/2" x 1-3/4" Bolt	12
15389	16" Disc Blade	1	90131	1/2" Flat Washer	24
21475	Spring Washer	1	90138	1/2" Nut	12
21439	4" Half Spool	3	12207	Locking Collar	1
21441	Spacer	6	12674	Locking Plate	1
12164	1-1/8" Square Bearing	3	14759	1-1/8" Nylock Nut	1
21440	1-5/8" Half Spool	3			

22548 Complete 1180 Scraper Kit

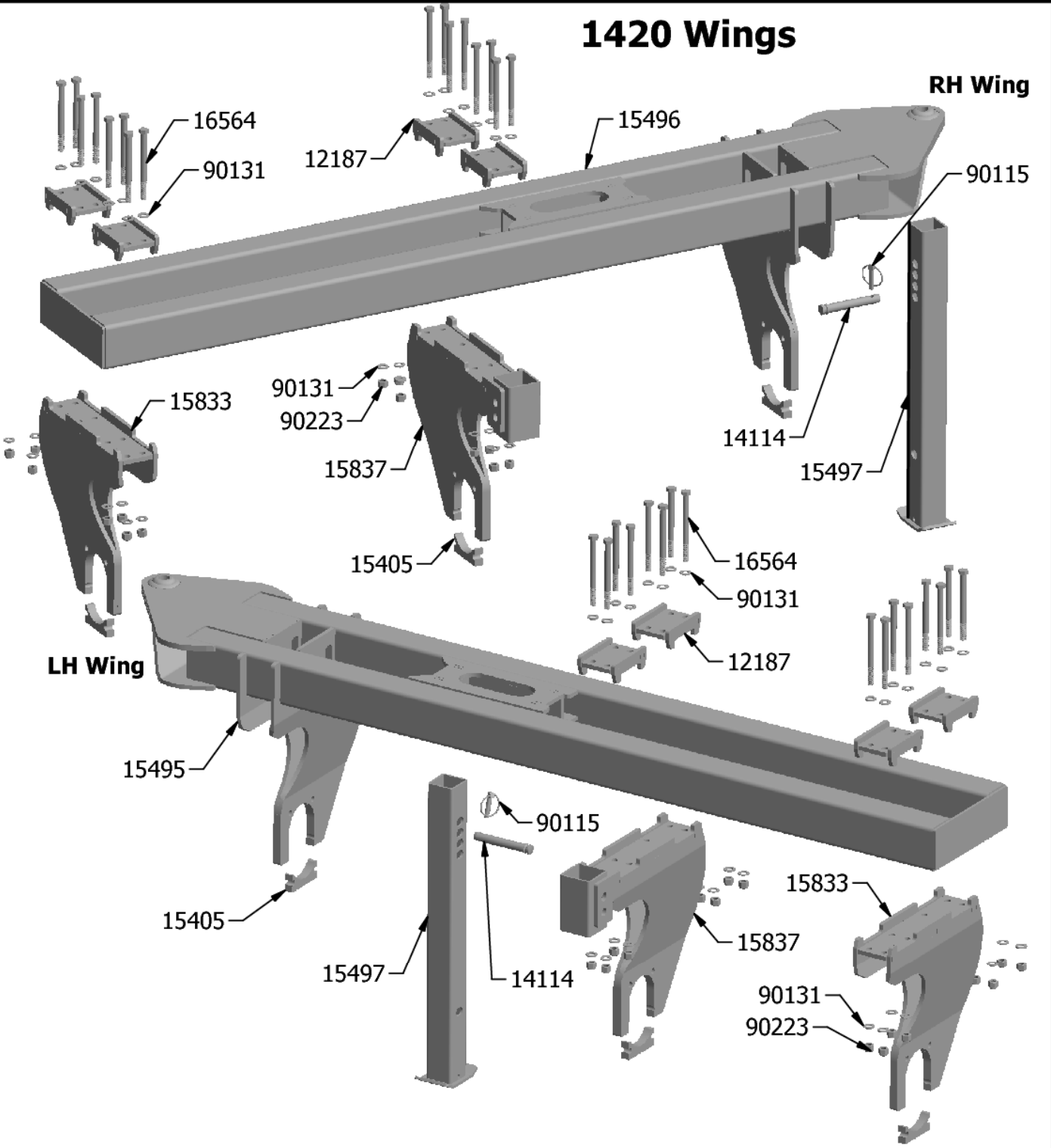
**22553
LH Only Kit**



**22554
RH Only Kit**

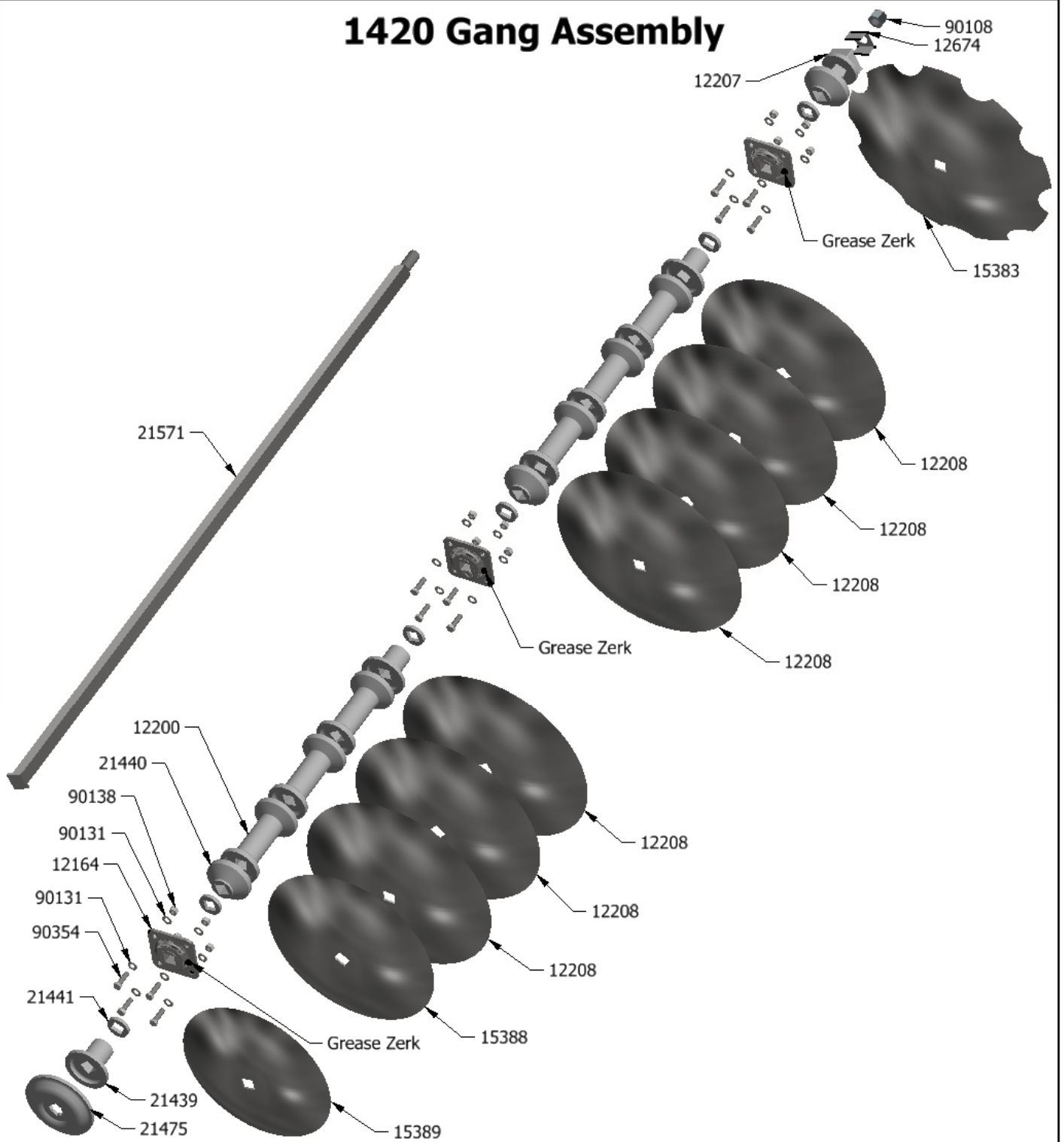
PARTS LIST				PARTS LIST			
ITEM	QTY	PART#	DESCRIPTION	ITEM	QTY	PART#	DESCRIPTION
1	2	22033	1180 Scraper Angle	8	4	90123	5/8" Lock Washer
2	2	22563	Heavy Mud Scraper LH	9	4	90137	5/8" Nut
3	2	22566	Heavy Mud Scraper RH	10	14	90354	1/2" x 1-3/4" Bolt
4	5	22569	Mud Scraper LH	11	14	90131	1/2" Flat Washer
5	5	22570	Mud Scraper RH	12	14	90134	1/2" Lock Washer
6	4	90161	5/8" x 2" Bolt	13	14	90138	1/2" nut
7	4	90124	5/8" Flat Washer				

1420 Wings



Parts			Parts		
Part #	Description	Qty	Part #	Description	Qty
15496	RH Wing - 1420	1	16564	1/2" x 6" Bolt	32
15495	LH Wing - 1420	1	90131	1/2" Washer	64
15837	Leg Bottom with stand	2	90223	1/2" Nylock Nut	32
15833	Leg Bottom	2	14114	Cat 1 Pin	2
12187	Leg Top Clamp	8	90115	7/16" x 1-1/2" Lynch Pin	2
15497	Stand Leg	2	15405	Bearing Keeper	6

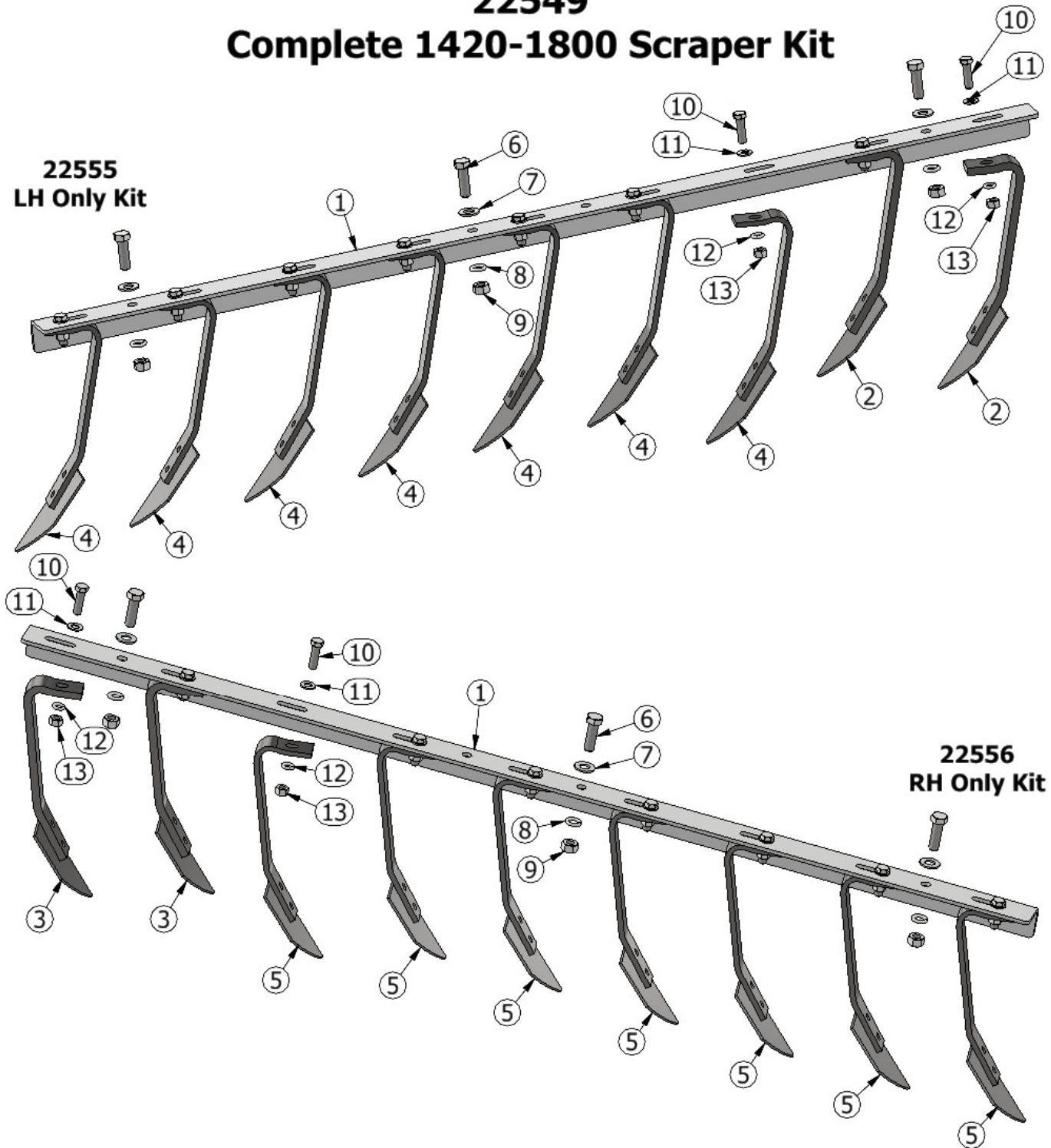
1420 Gang Assembly



Parts			Parts		
Part #	Description	Qty	Part #	Description	Qty
15383	22" Notched Disc Blade	1	12200	7-1/2" Spool	6
12208	20" Disc Blade	7	12211	1-1/8" Square Axle 72"	1
15388	18" Disc Blade	1	90354	1/2" x 1-3/4" Bolt	12
15389	16" Disc Blade	1	90131	1/2" Flat Washer	24
21475	Spring Washer	1	90138	1/2" Nut	12
21439	4" Half Spool	3	12207	Locking Coller	1
21441	Spacer	6	12674	Locking Plate	1
12164	1-1/8" Square Bearing	3	14759	1-1/8" Nylock Nut	1
21440	1-5/8" Half Spool	3			

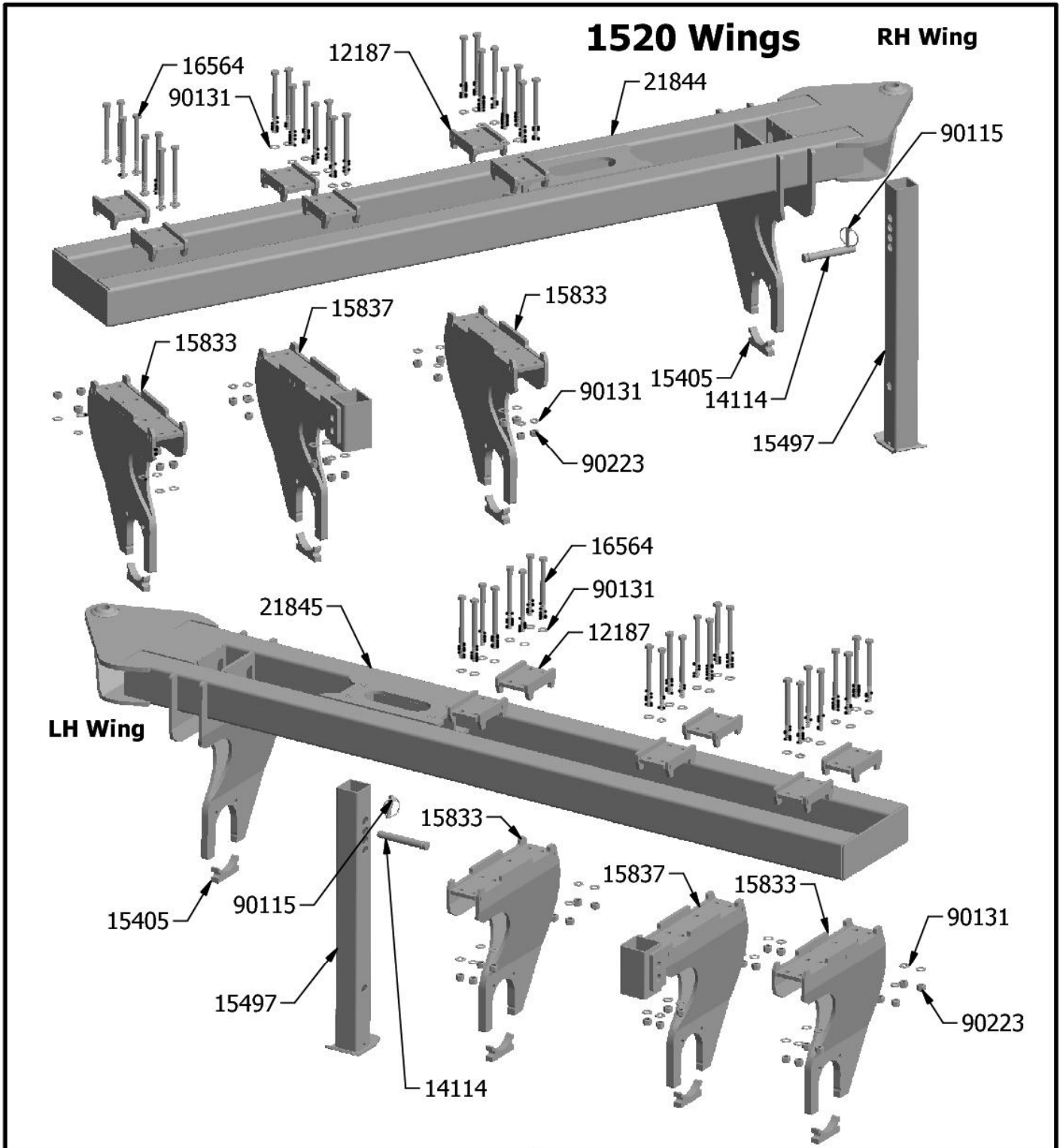
22549 Complete 1420-1800 Scraper Kit

**22555
LH Only Kit**



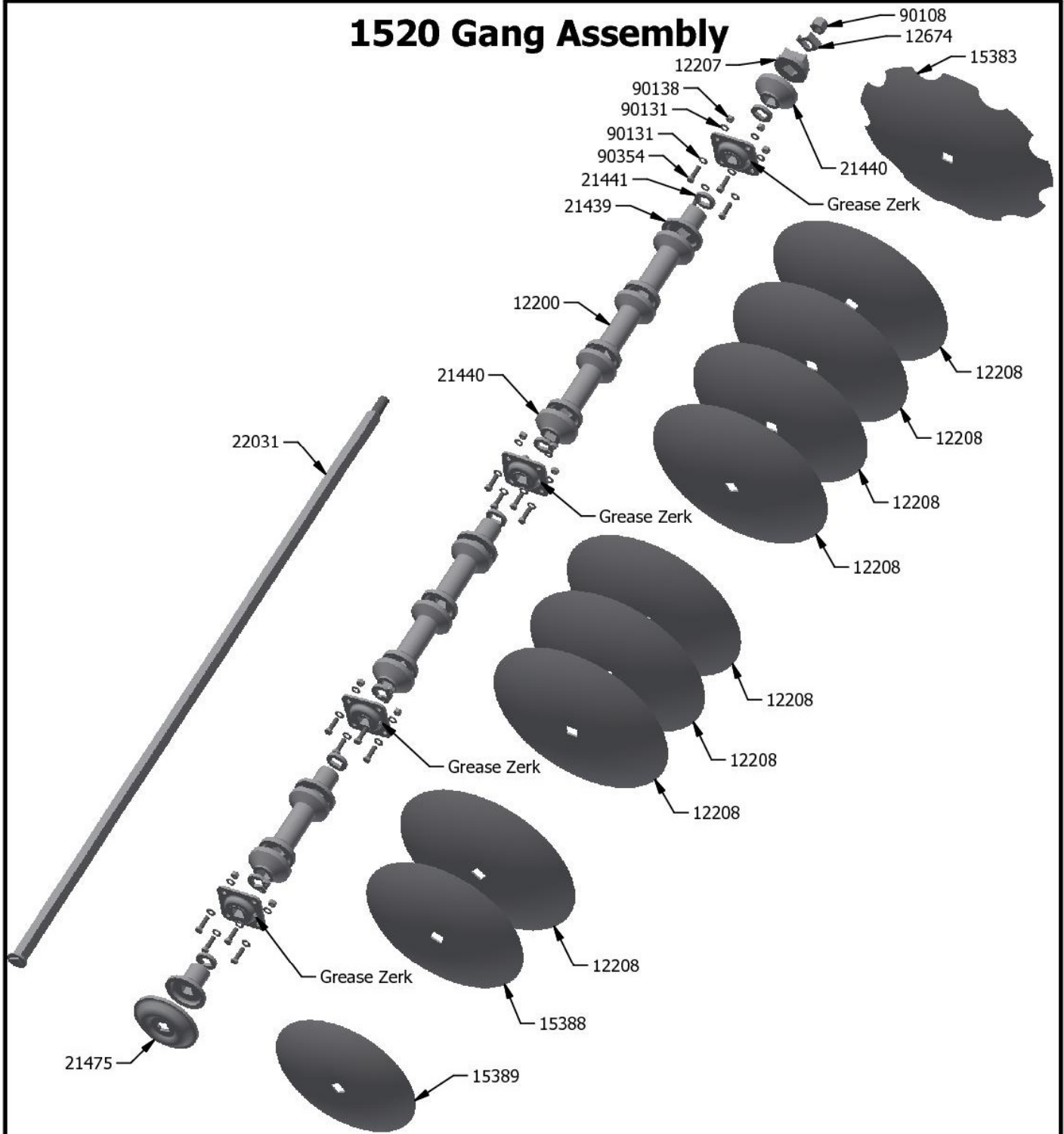
**22556
RH Only Kit**

PARTS LIST				PARTS LIST			
ITEM	QTY	PART#	DESCRIPTION	ITEM	QTY	PART#	DESCRIPTION
1	2	22037	1420 - 1800 Scraper Angle	8	6	90123	5/8" Lock Washer
2	2	22563	Heavy Mud Scraper LH	9	6	90137	5/8" Nut
3	2	22566	Heavy Mud Scraper RH	10	18	90354	1/2" x 1-3/4" Bolt
4	7	22569	Mud Scraper LH	11	18	90131	1/2" Flat Washer
5	7	22570	Mud Scraper RH	12	18	90134	1/2" Lock Washer
6	6	90161	5/8" x 2" Bolt	13	18	90138	1/2" nut
7	6	90124	5/8" Flat Washer				



Parts			Parts		
Part #	Description	Qty	Part #	Description	Qty
15496	RH Wing - 1520	1	16564	1/2" x 6" Bolt	48
15495	LH Wing - 1520	1	90131	1/2" Washer	96
15837	Leg Bottom with stand	2	90223	1/2" Nylock Nut	48
15833	Leg Bottom	4	14114	Cat 1 Pin	2
12187	Leg Top Clamp	12	90115	7/16" x 1-1/2" Lynch Pin	2
15497	Stand Leg	2	15405	Bearing Keeper	8

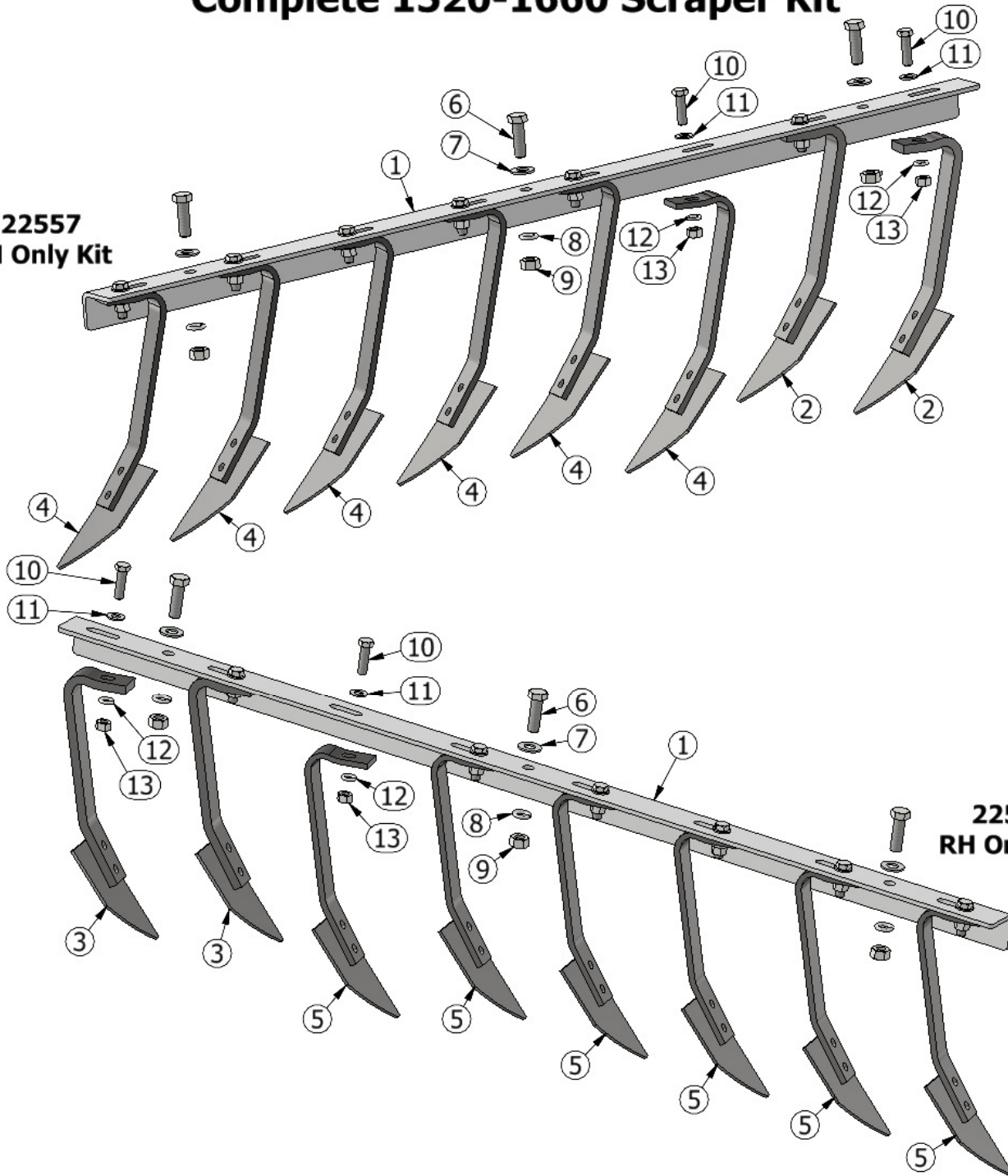
1520 Gang Assembly



Parts			Parts		
Part #	Description	Qty	Part #	Description	Qty
15383	22" Notched Disc Blade	1	12200	7-1/2" Spool	6
12208	20" Disc Blade	8	22031	1-1/8" Square Axle 80.75"	1
15388	18" Disc Blade	1	90354	1/2" x 1-3/4" Bolt	16
15389	16" Disc Blade	1	90131	1/2" Flat Washer	32
21475	Spring Washer	1	90138	1/2" Nut	16
21439	3-3/4" Half Spool	4	12207	Locking Coller	1
21441	Spacer	8	12674	Locking Plate	1
12164	1-1/8" Square Bearing	4	14759	1-1/8" Nylock Nut	1
21440	1-3/4" Half Spool	4			

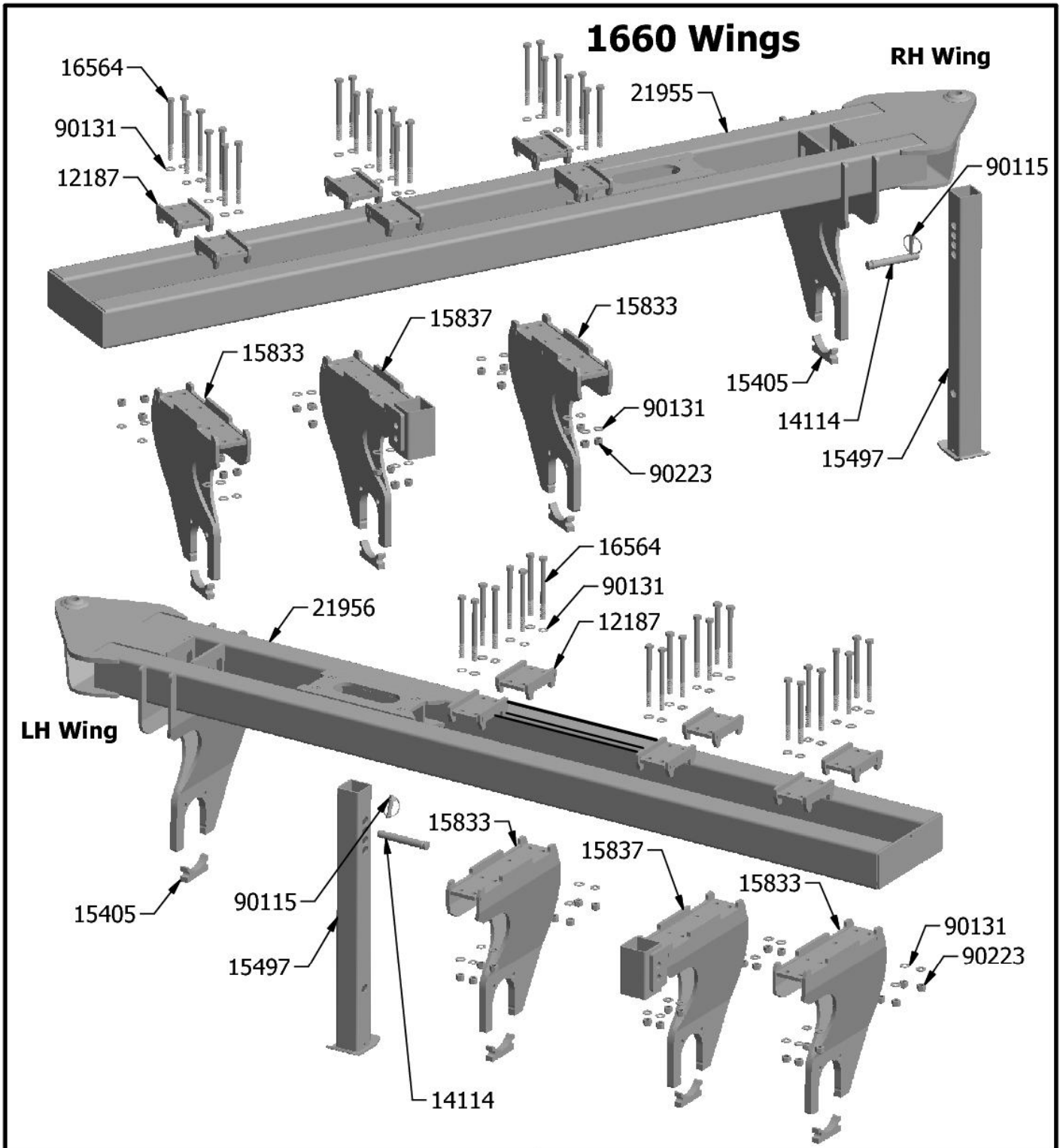
22550 Complete 1520-1660 Scraper Kit

**22557
LH Only Kit**



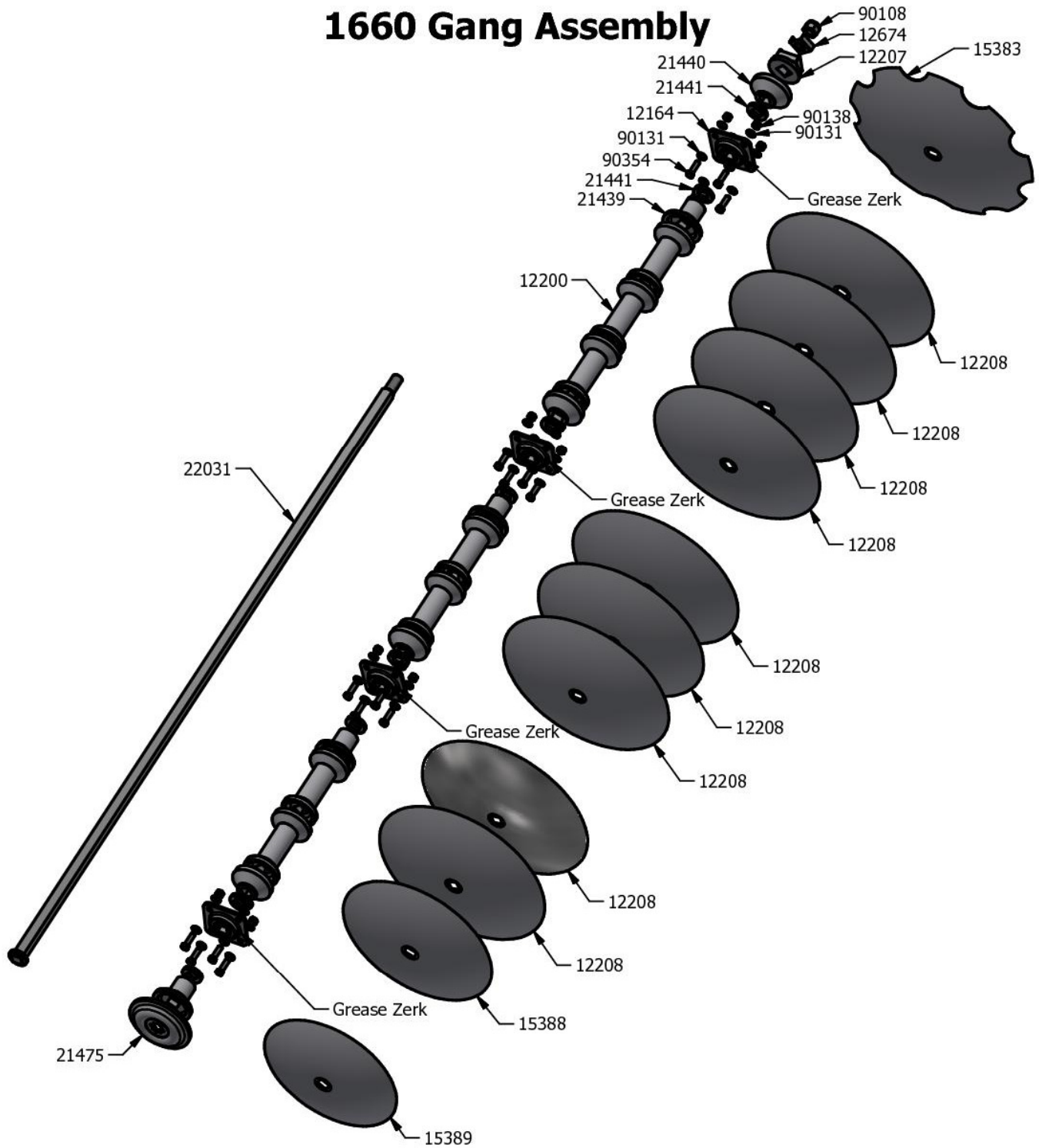
**22558
RH Only Kit**

PARTS LIST				PARTS LIST			
ITEM	QTY	PART#	DESCRIPTION	ITEM	QTY	PART#	DESCRIPTION
1	2	22034	1520-1660 Scraper Angle	8	6	90123	5/8" Lock Washer
2	2	22563	Heavy Mud Scraper LH	9	6	90137	5/8" Nut
3	2	22566	Heavy Mud Scraper RH	10	16	90354	1/2" x 1-3/4" Bolt
4	6	22569	Mud Scraper LH	11	16	90131	1/2" Flat Washer
5	6	22570	Mud Scraper RH	12	16	90134	1/2" Lock Washer
6	6	90161	5/8" x 2" Bolt	13	16	90138	1/2" nut
7	6	90124	5/8" Flat Washer				



Parts			Parts		
Part #	Description	Qty	Part #	Description	Qty
21955	RH Wing - 1660	1	16564	1/2" x 6" Bolt	48
21956	LH Wing - 1660	1	90131	1/2" Washer	96
15837	Leg Bottom with stand	2	90223	1/2" Nylock Nut	48
15833	Leg Bottom	4	14114	Cat 1 Pin	2
12187	Leg Top Clamp	12	90115	7/16" x 1-1/2" Lynch Pin	2
15497	Stand Leg	2	15405	Bearing Keeper	8

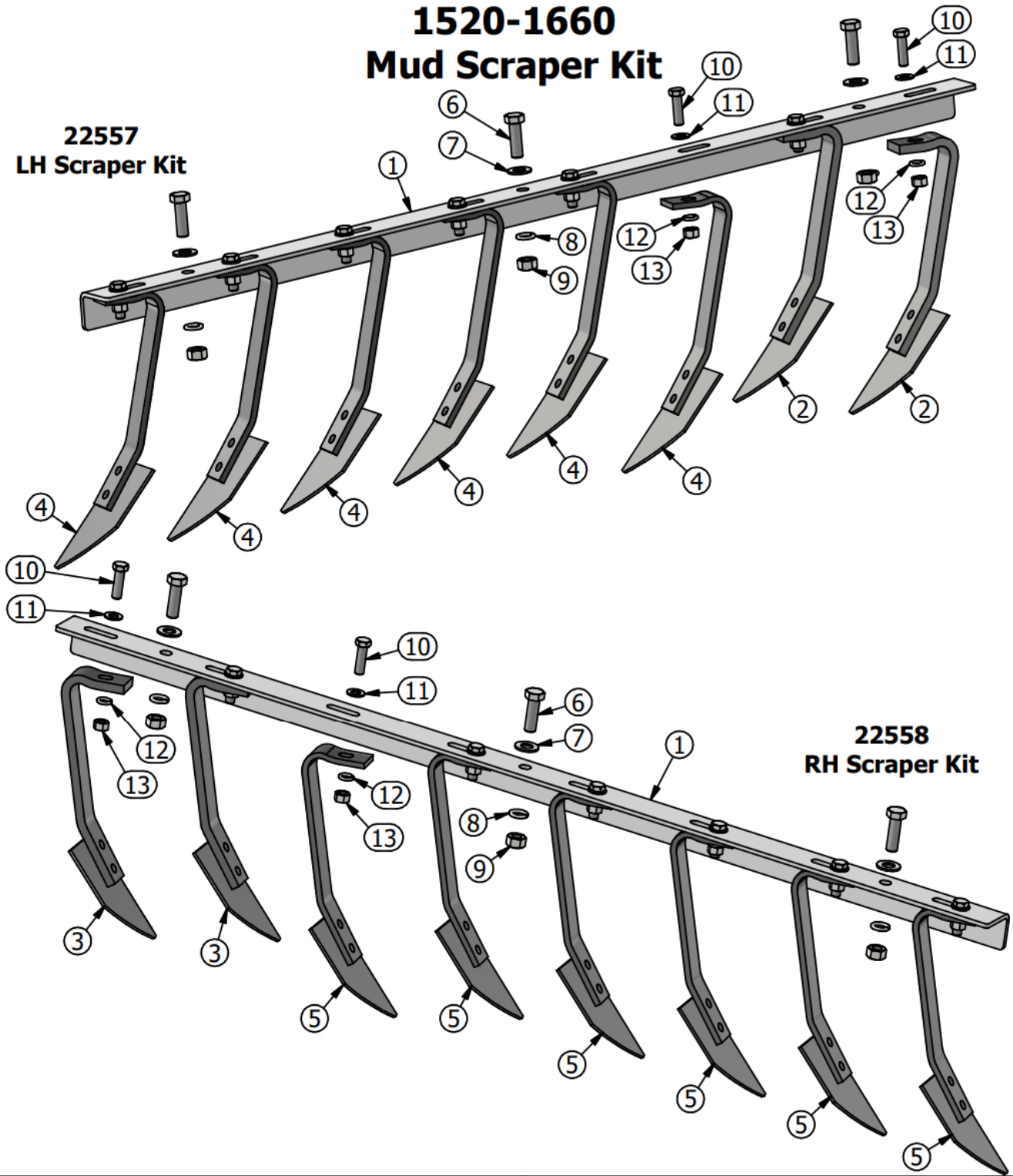
1660 Gang Assembly



Parts			Parts		
Part #	Description	Qty	Part #	Description	Qty
15383	22" Notched Disc Blade	1	12200	7-1/2" Spool	7
12208	20" Disc Blade	9	22031	1-1/8" Square Axle 88.25"	1
15388	18" Disc Blade	1	90354	1/2" x 1-3/4" Bolt	16
15389	16" Disc Blade	1	90131	1/2" Flat Washer	32
21475	Spring Washer	1	90138	1/2" Nut	16
21439	3-3/4" Half Spool	4	12207	Locking Coller	1
21441	Spacer	8	12674	Locking Plate	1
12164	1-1/8" Square Bearing	4	14759	1-1/8" Nylock Nut	1
21440	1-3/4" Half Spool	4			

1520-1660 Mud Scraper Kit

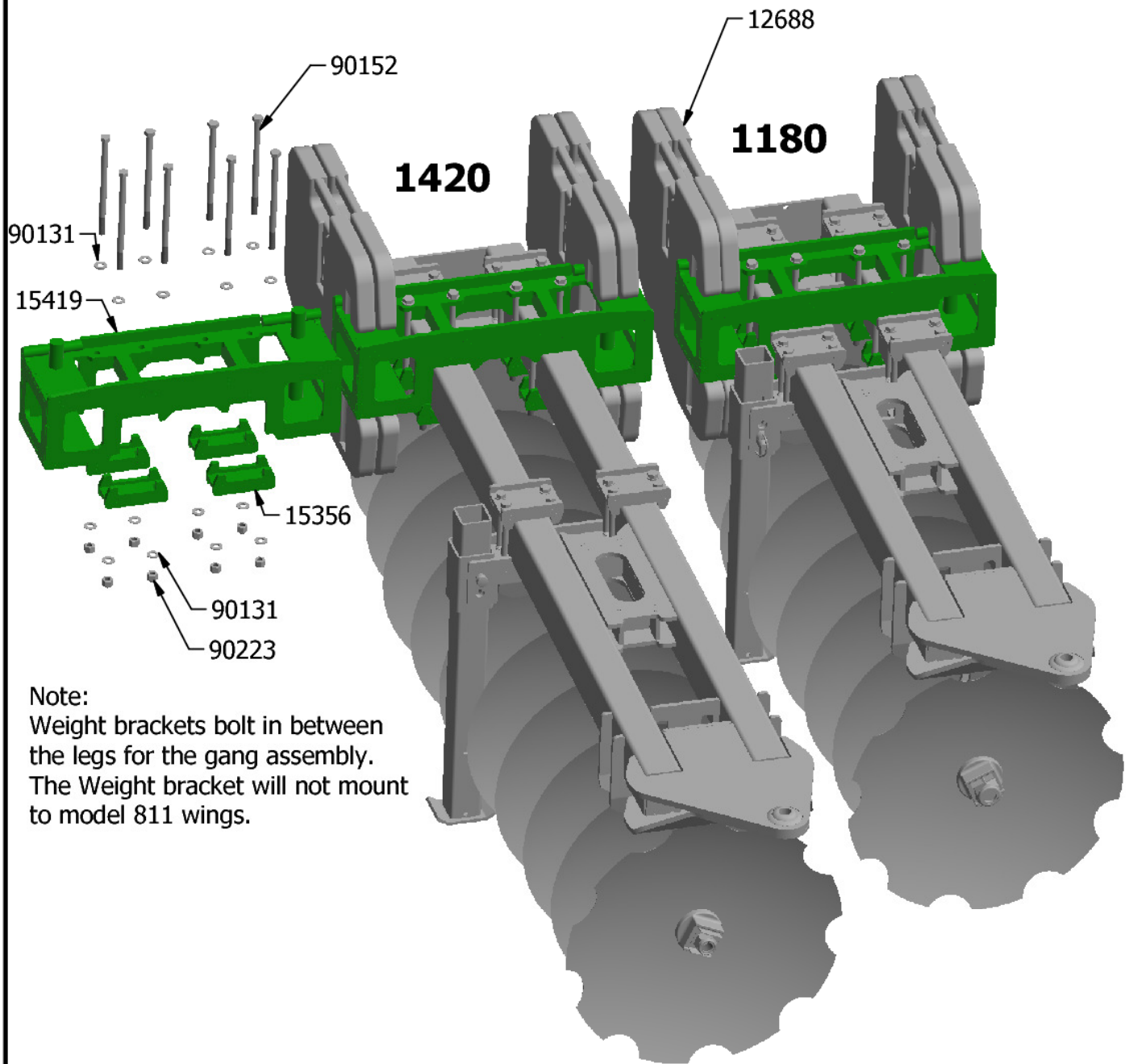
**22557
LH Scraper Kit**



**22558
RH Scraper Kit**

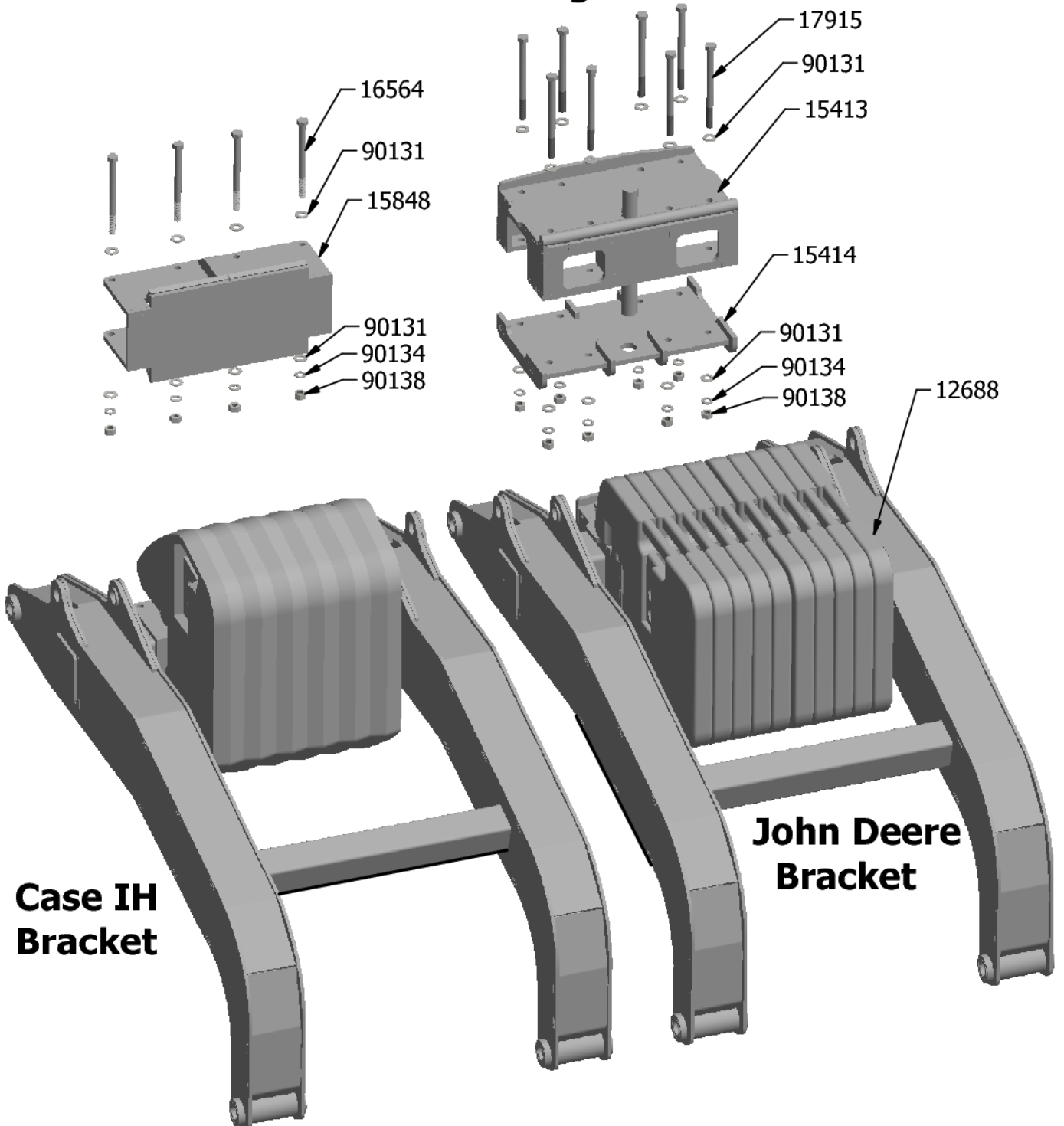
PARTS LIST				PARTS LIST			
ITEM	QTY	PART#	DESCRIPTION	ITEM	QTY	PART#	DESCRIPTION
1	2	22034	1520-1660 Scraper Angle	8	6	90123	5/8" Lock Washer
2	2	22563	Heavy Mud Scraper LH	9	6	90137	5/8" Nut
3	2	22566	Heavy Mud Scraper RH	10	16	90354	1/2" x 1-3/4" Bolt
4	6	22209	Mud Scraper LH	11	16	90131	1/2" Flat Washer
5	6	22210	Mud Scraper RH	12	16	90134	1/2" Lock Washer
6	6	90161	5/8" x 2" Bolt	13	16	90138	1/2" nut
7	6	90124	5/8" Flat Washer				

Model 1180 & 1420 Weight Bracket



Parts			Parts		
Part #	Description	Qty	Part #	Description	Qty
15419	Weight Bracket Top 1180 & 1420	1	90152	1/2" X 8-1/2" Bolt	8
15356	Weight Bracket Bottom Clamp	4	90131	1/2" Flat Washer	16
12688	100 lb Suitcase Weight	4	90223	1/2" Nylock Nut	8

Basket Arm Weight Bracket



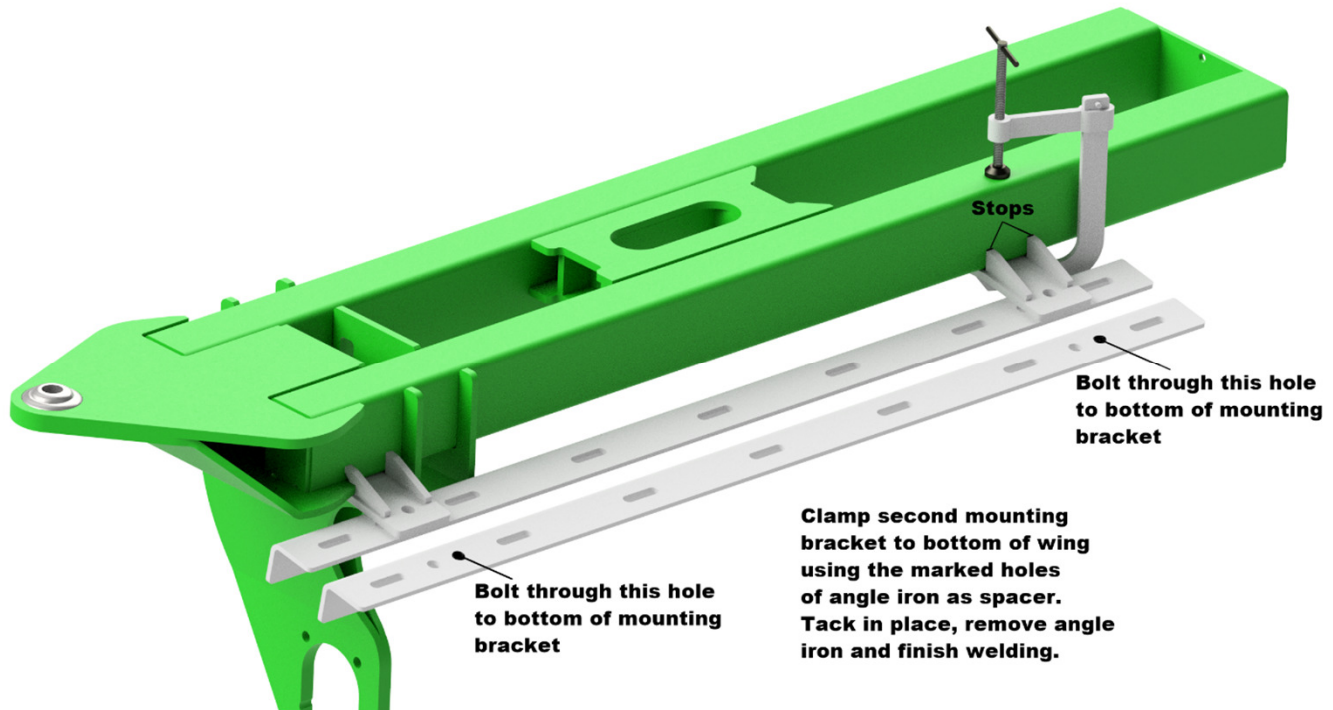
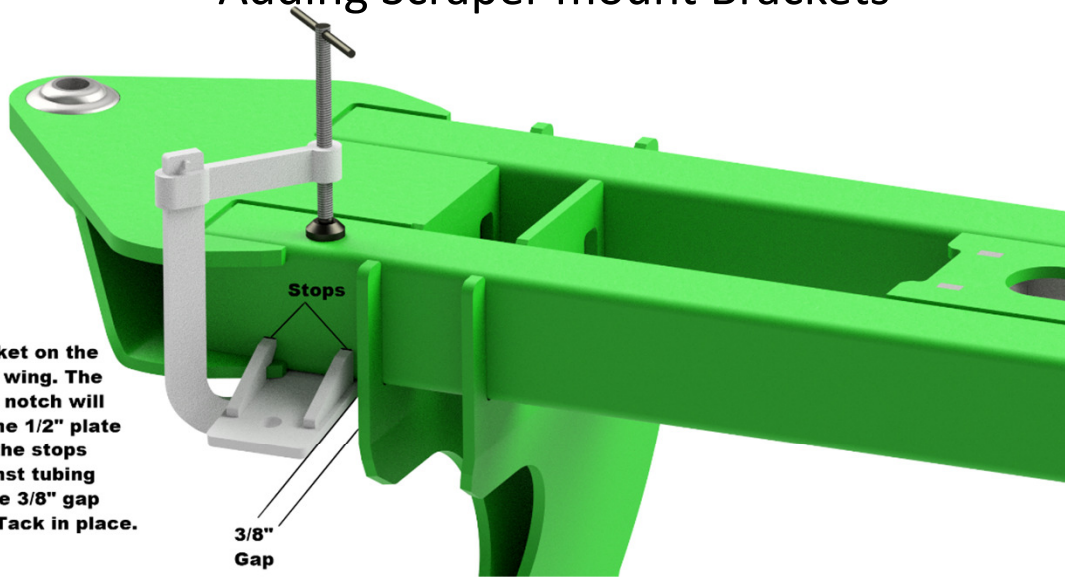
**Case IH
Bracket**

**John Deere
Bracket**

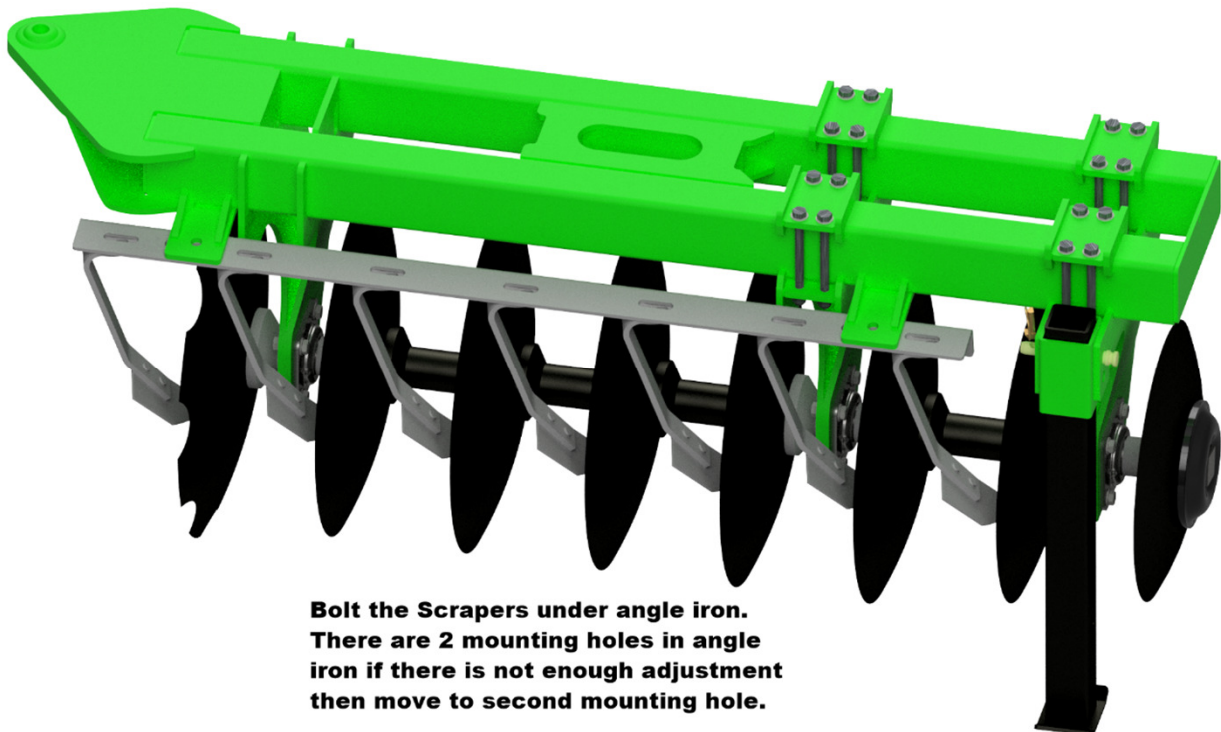
Parts			Parts		
Part #	Description	Qty	Part #	Description	Qty
15848	Case IH Weight Bracket	1	17915	1/2" x 6-1/2" Bolt	8
15413	JD Weight Bracket Top	1	90131	1/2" Flat Washer	8C-16JD
15414	JD Weight Bracket Bottom	1	90134	1/2" Lock Washer	4C-8JD
12688	Besler Suitcase Weights	1	90138	1/2" Nut	4C-8JD
16564	1/2" x 6" Bolt	4			

Adding Scraper mount Brackets

Clamp bracket on the backside of wing. The gusset with notch will slide over the 1/2" plate make sure the stops are up against tubing and measure 3/8" gap as shown - Tack in place.



Clamp second mounting bracket to bottom of wing using the marked holes of angle iron as spacer. Tack in place, remove angle iron and finish welding.



Bolt the Scrapers under angle iron. There are 2 mounting holes in angle iron if there is not enough adjustment then move to second mounting hole.