



*Quality Built Since 1973*

INSTALLATION AND SETUP MANUAL

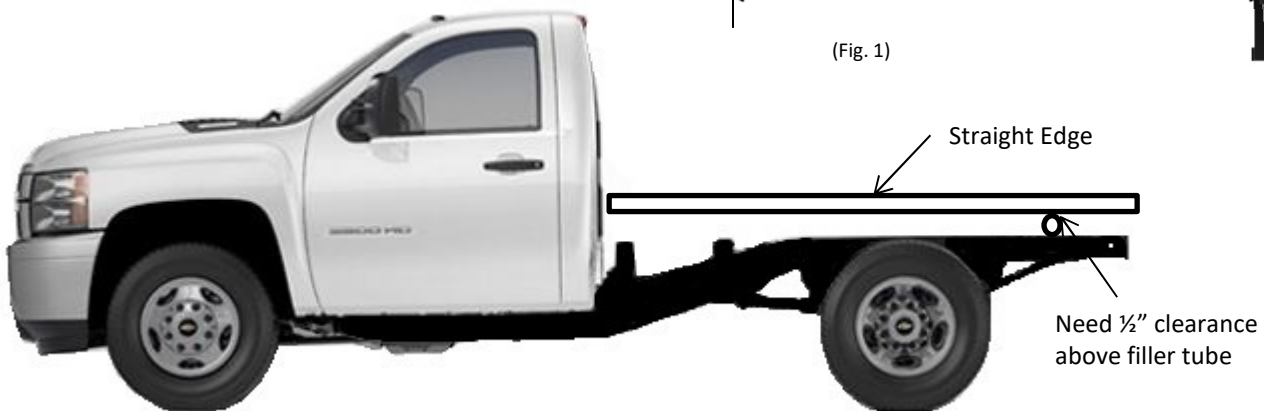
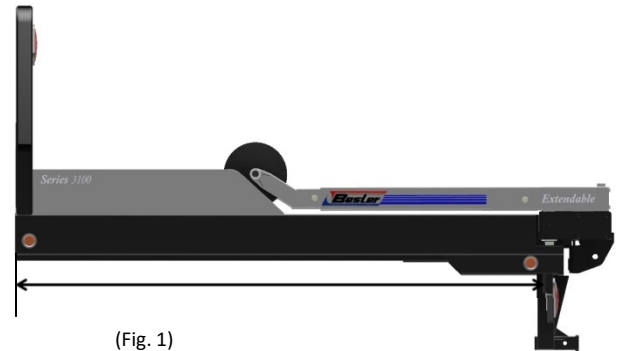
6000 SERIES FLATBED





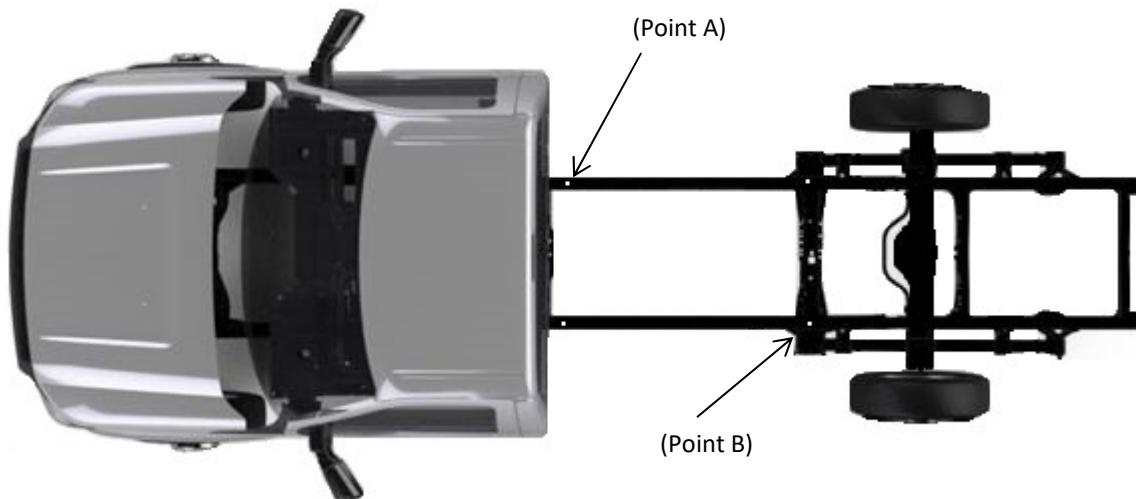
## MODEL 6000 FLAT BED INSTALLATION INSTRUCTIONS

- 1) Remove box from truck.
- 2) Cut truck frame to length. Measure from front of bed to backside of license plate panel. (Fig 1)(Save removed pieces for future Replacement)
- 3) Measure fuel filler tube if it is above the frame and make sure there is  $\frac{1}{2}$ " clearance above it.
- 4) Lay Straight edge along and parallel to truck frame rail

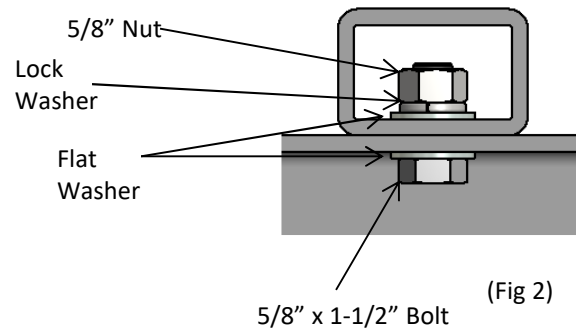


- 5) Center 2" x 3" tube at the front set of existing box mounting holes. (Point A)

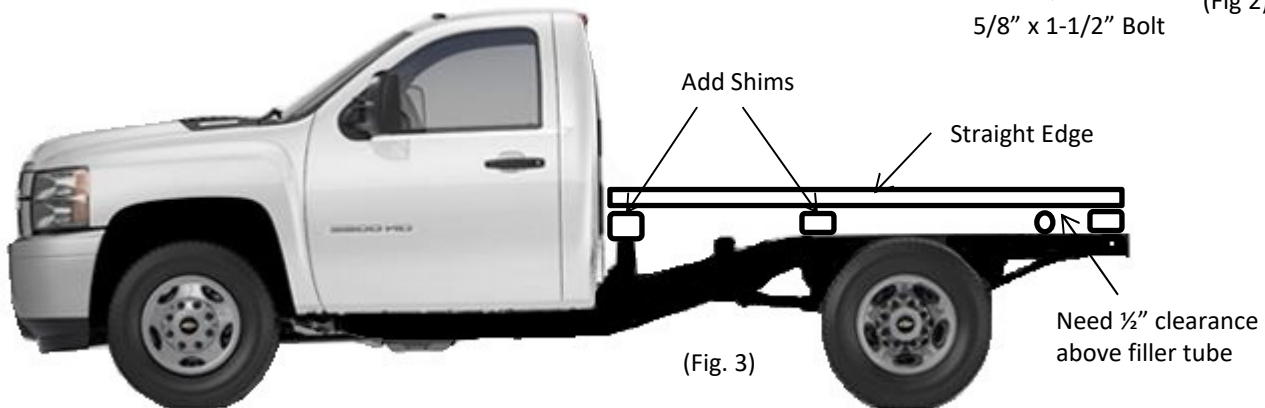
**NOTE: If truck frame rails are over 38" wide, 2" x 3" tubes must be provided by the installer.**



- 6) Drill tube to match existing holes in truck frame (5/8" Diameter)
- 7) Repeat Steps 5 & 6 for the 2" x 3" for (Point B)
- 8) Bolt tubes to truck frame rails using 5/8" x 1-1/2" bolts, lockwashers, washer and nuts. (Fig 2)
- 9) Add Shims to the top of tubes to get the straight edge parallel and level to truck frame. (Fig. 3)

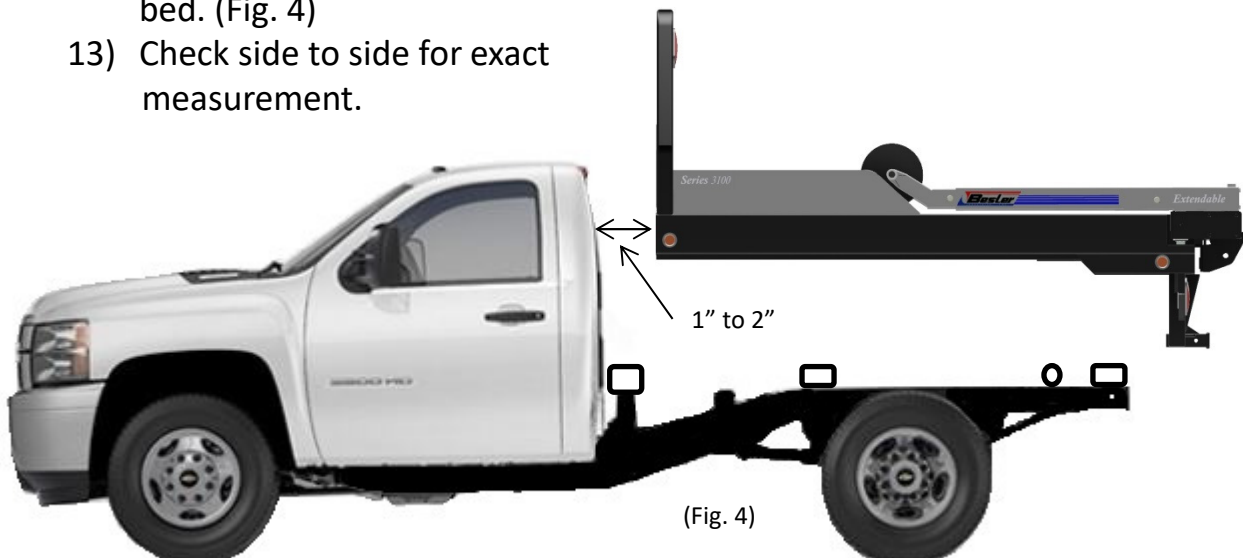


(Fig 2)



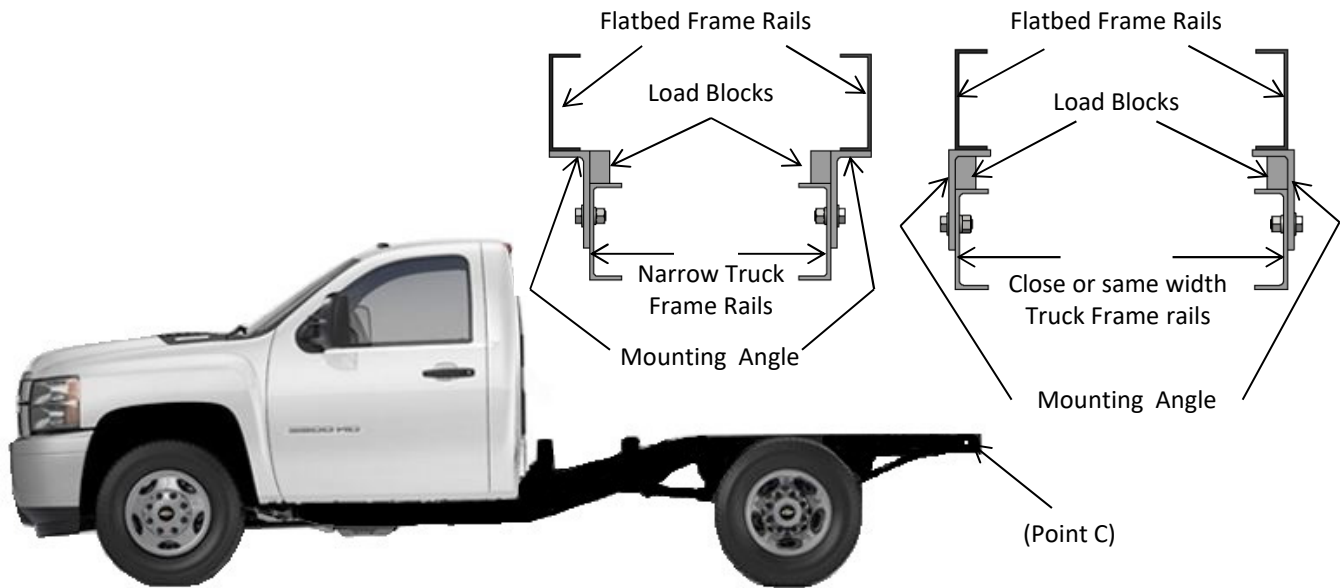
(Fig. 3)

- 10) Double check clearance for fuel filler tube.
- 11) Weld Shims all around on top of crosstubes  
**NOTE: All welding should be done by a qualified professional.**
- 12) Center Flat bed on truck leaving 1" to 2" from back of cab to front of flat bed. (Fig. 4)
- 13) Check side to side for exact measurement.



(Fig. 4)

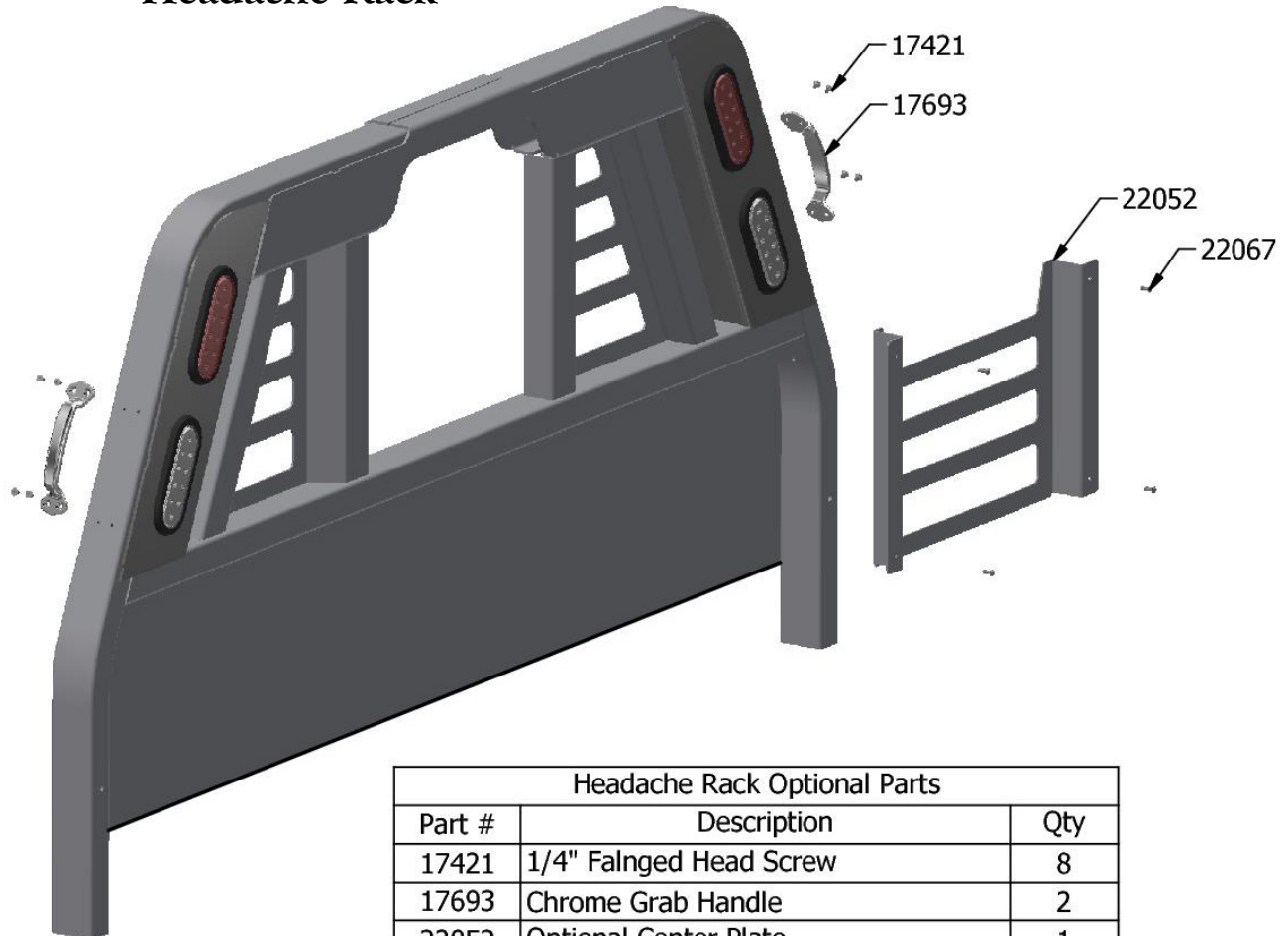
- 14) Double check all measurements and clearance
- Check cab to front of bed
  - Fuel Filler Clearance
  - Hydraulic Pan to truck frame
- 15) Bolt Angles to existing holes in truck frame (Point C)



- 16) Cut load blocks to length and clamp to mounting angle. Load blocks will carry all of the weight of flat bed and cargo when properly installed.
- 17) Weld Load Blocks to mounting angles, weld angles to flat bed rails.  
**CAUTION: DO NOT WELD ANY PART OF THE FLAT BED TO THE TRUCK FRAME RAILS.**
- 18) Weld front tubes and shims to flat bed rails.

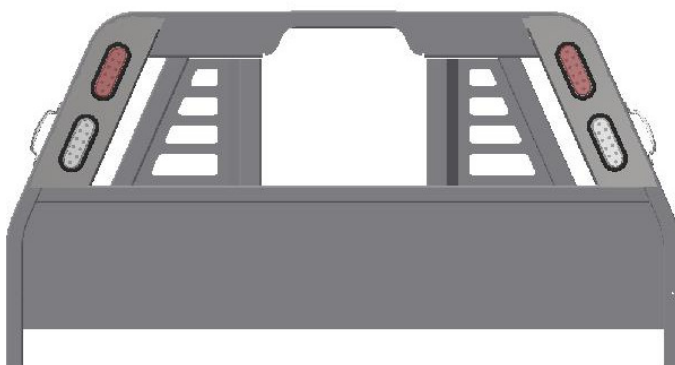


## Headache Rack

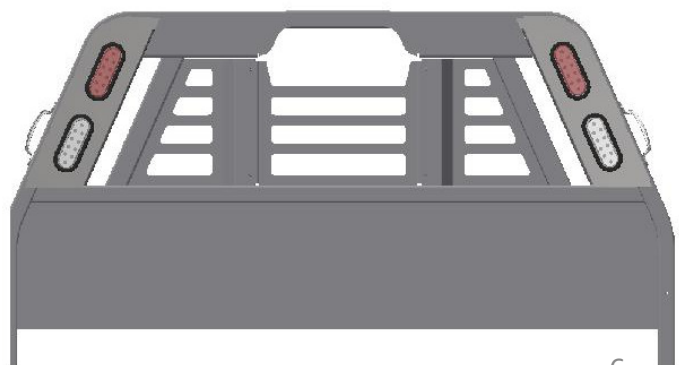


Headache Rack Optional Parts		
Part #	Description	Qty
17421	1/4" Flanged Head Screw	8
17693	Chrome Grab Handle	2
22052	Optional Center Plate	1
22067	Phillips Head SS Self Tapping Screw	4

Standard Headache Rack



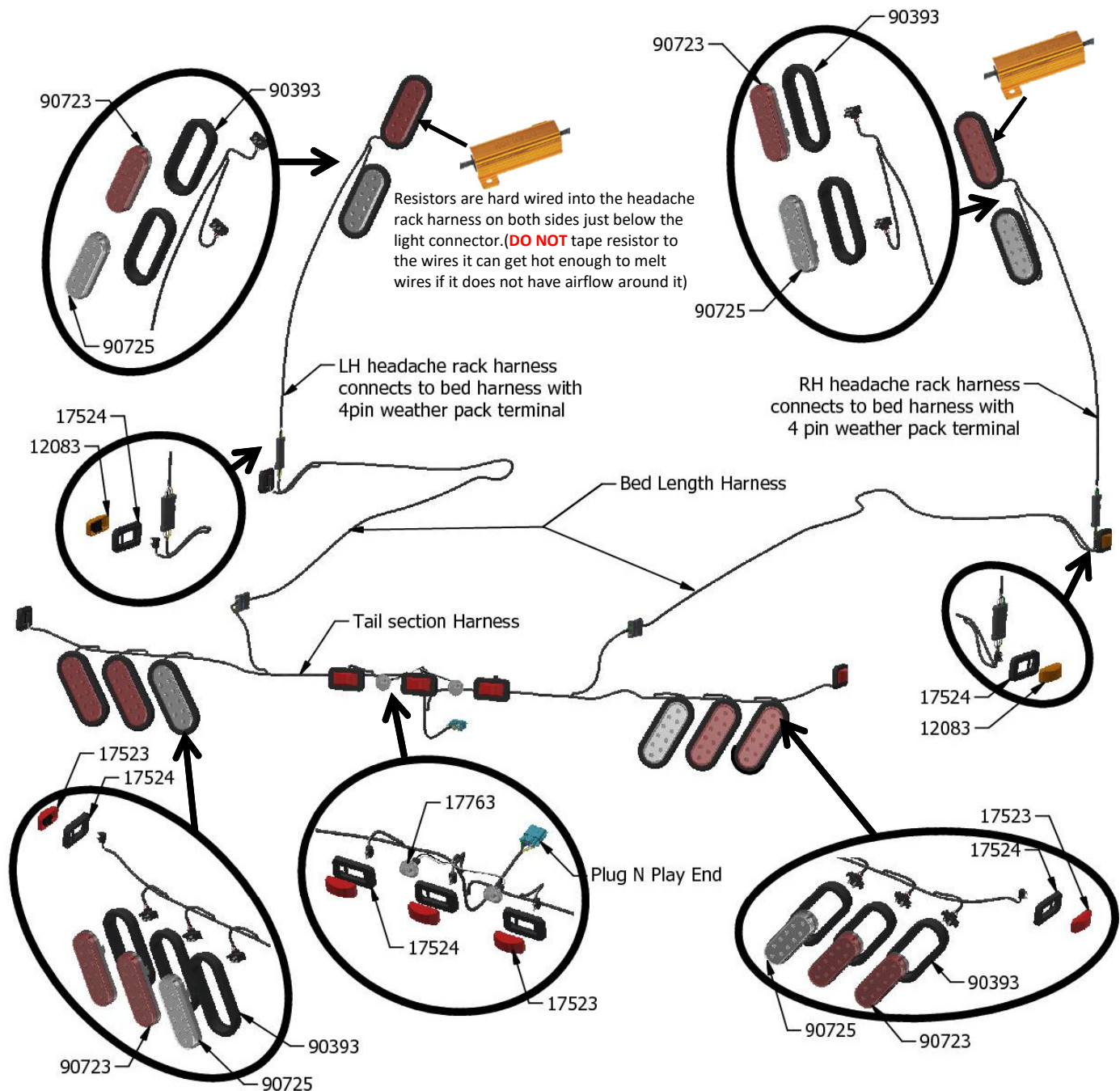
Optional Center Plate  
Large Opening for 5th Wheel Camera





## 6000 Series FlatbedLights

Resistors are hard wired into the headache rack harness on both sides just below the light connector. (**DO NOT** tape resistor to the wires it can get hot enough to melt wires if it does not have airflow around it)



Wire Harness Parts		
Part #	Description	Qty
90393	Oval Grommet	10
90723	Red LED oval light	6
90725	White LED oval light	4
17524	Rect. Rubber Grommet	7
12083	Rect. Amber LED light	2
17523	Rect. Red LED light	5
17763	LED License PLate light	2

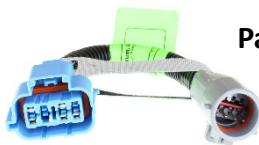
Bed Length harness	
Part #	Length
22070	87"
22071	103"
22072	112"
22073	136"

Wire Harness Every Bed		
Part #	Description	Qty
22068	LH headache rack harness	1
22069	RH headache rack harness	1
22074	Tail section harness	1



## Plug-N-Play Connectors

### Ford



#### Part # JCTS9707

1997-07 Ford  
Bed Take Off



#### Part # JCTS0810

2008-10 Ford  
Bed Take Off



#### Part # JCTS425

2011-16 Ford Bed  
Take Off w/camwrs



#### Part # JCTS426

2017 & up Ford  
Bed Take Off



#### Part # JCTS306

1999 and up Ford  
Cab & Chassis



#### Part # JCTS564

2020 Ford Bed Take Off

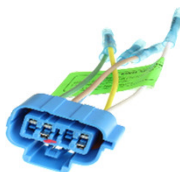
### WARNING

This connector may need to be modified  
See page 8 for more information.



#### Part # FRD-BLIS

Only added to 2020 Ford Bed  
Take Off with the Blind spot  
Package. To Install Cut the red  
Wire from JCTS564 and splice  
Into this end, this has to be  
Purchased with JCTS564



### RAM

#### Part # JCTS1230

Generic Adapter can be used  
For most Ram trucks, Most  
Ram trucks do not have quick  
Connects. Wiring this end will  
Make it easy to unhook if ever  
Needed.



#### Part # JCTS307

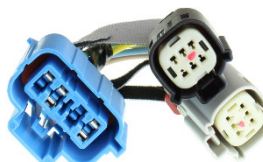
1999 and up Ram  
Cab & Chassis

### GM



#### Part # JCTS300

2015 only GM  
Trucks



#### Part # JCTS353

2016 & up GM  
Trucks



#### Part # 6807-CM-MD-DTY

2019 & up GM  
4500-6500 Cab  
& Chassis



#### Part # JCTS541

2020 GM  
2500-3500

### Resistors



#### Part # 55041

Inline Resistors are sold in pairs. Unplug wire harness  
from turn signal, plug the resistor into the turn signal and  
connect harness to the other end of resistor, then secure 8  
the weight of resistor with screw or zip ties.

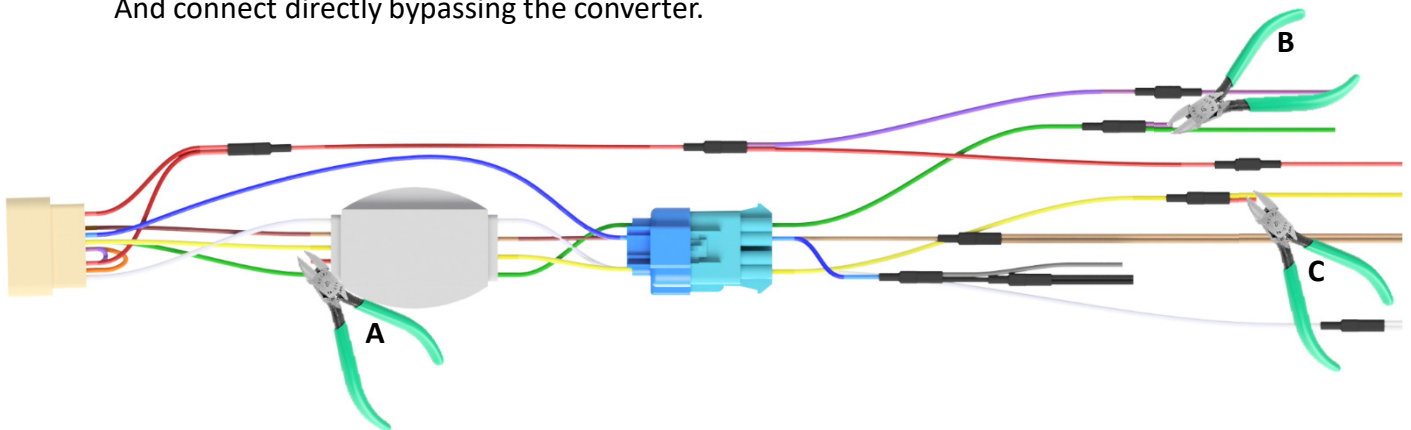
## 2020 Ford Bed Take Off

If the converter overheats and  
Quits it will not be covered under  
Warranty.



This connector uses a Hopkins Converter to separate the turn signal and brake light. Under Normal driving conditions this connector works fine. It cannot handle running the flashers For very long or it will burn chip inside converter. Hopkins will not warranty this because it Is made for turn signals not flashers. They suggest 2 ways of dealing with it.

1. Wire external flashers on vehicle – like the hideaway flashers you can get in a kit.
2. Cut the red wire from converter and cut the red wire and the purple wire in the loom And connect directly bypassing the converter.



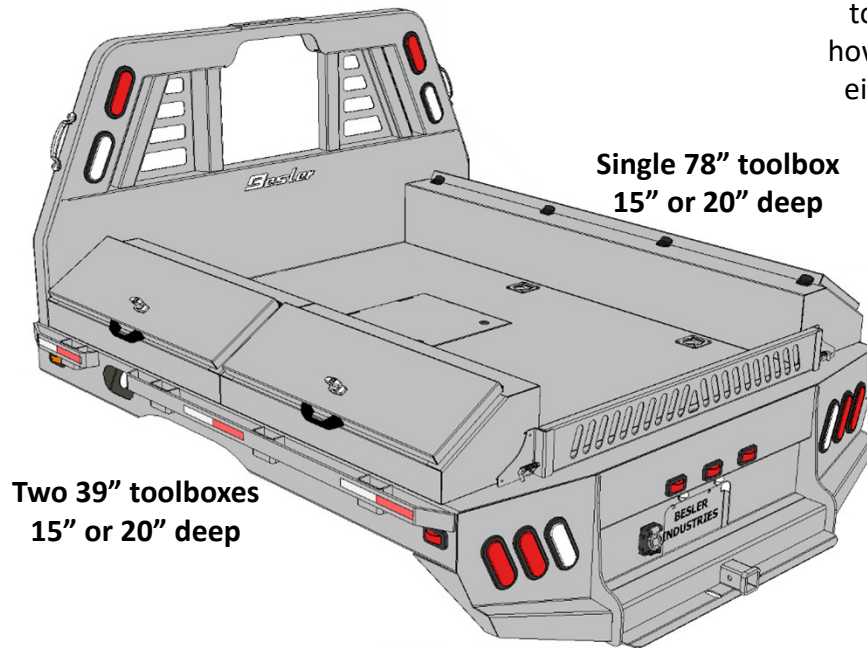
Cut the Red wire coming off the converter (A). About 5 to 6 inches front the blue or brown Plug n play adapter on wire harness, (you will have to remove some of the protective covering) find where the **green** and **purple** wires are joined and separate the **purple** wire (B), Then find Where the **yellow** and **red** wires connect and separate the **Red** wire (C). Now join the **Purple** And **Red** wire together and connect to **red** wire by the converter, now the circuits are independent. Make sure to use good heat shrink with sealant to make sure your connections are watertight.

If planning on pulling a fifth wheel, the top taper only is needed trailer will not clear the front con box on 87" bed.



## Toolbox Options 6087

All toolboxes are modular and bolt to the bed so they can be setup however needed – 2 long boxes on either side, or 4 shorts on either side, or mixed.

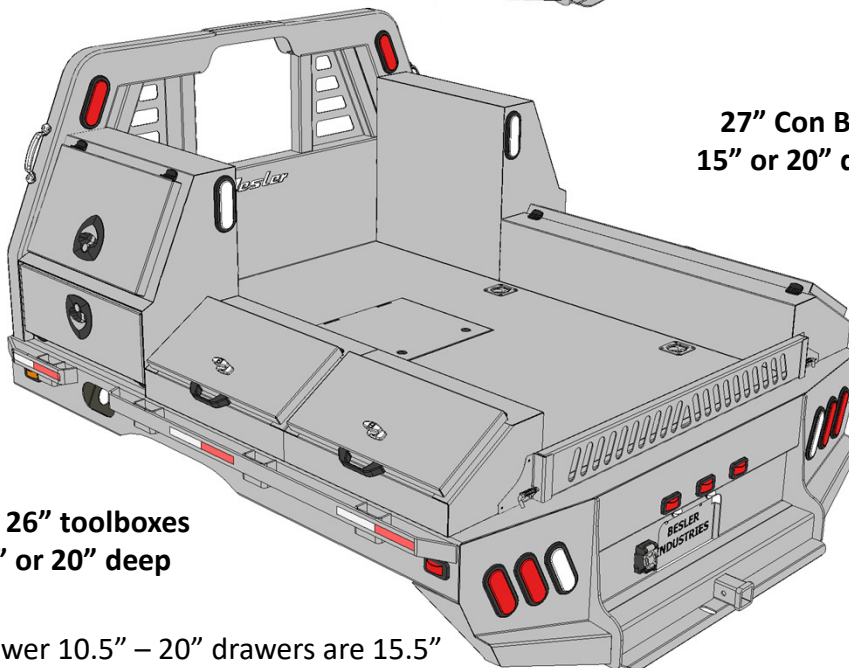


**Two 39" toolboxes**  
15" or 20" deep

**Single 78" toolbox**  
15" or 20" deep

### Toolboxes

Description	-	Part #
24"-15"deep LH		20294
24"-20"deep LH		20298
24"-15"deep RH		20295
24"-20"deep RH		20299
27"-15"deep LH		20305
27"-20"deep LH		20308
27"-15"deep RH		20306
27"-20"deep RH		20309
34"x15"deep		20315
34"x20"deep		20316
68"x15"deep		20324
68"x20"deep		20325



**Two 26" toolboxes**  
15" or 20" deep

**27" Con Box**  
15" or 20" deep

**Single 52" toolbox**  
15" or 20" deep

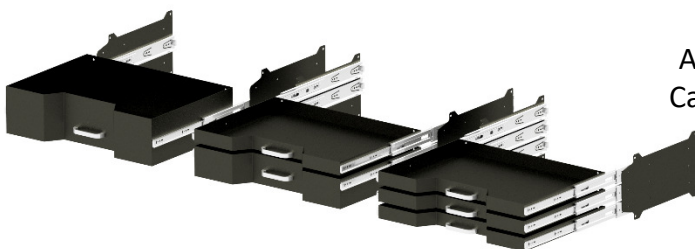
15" drawer 10.5" – 20" drawers are 15.5"

**Single drawer** 22 x 10.5" x 5-3/4"

**Double drawer** - 1 drawers 22" x 10.5" x 3-5/8" & 1 Triple drawer

**Triple Drawer** – 3 drawers 22 x 10.5" x 1-9/16"

**15" boxes leaves 50" in between**  
**20" boxes leaves 40" in between**



All Con boxes have mounts for drawers so they can always be added later – same plate used for 1, 2, or 3 drawer setup



## Toolbox Options 6102

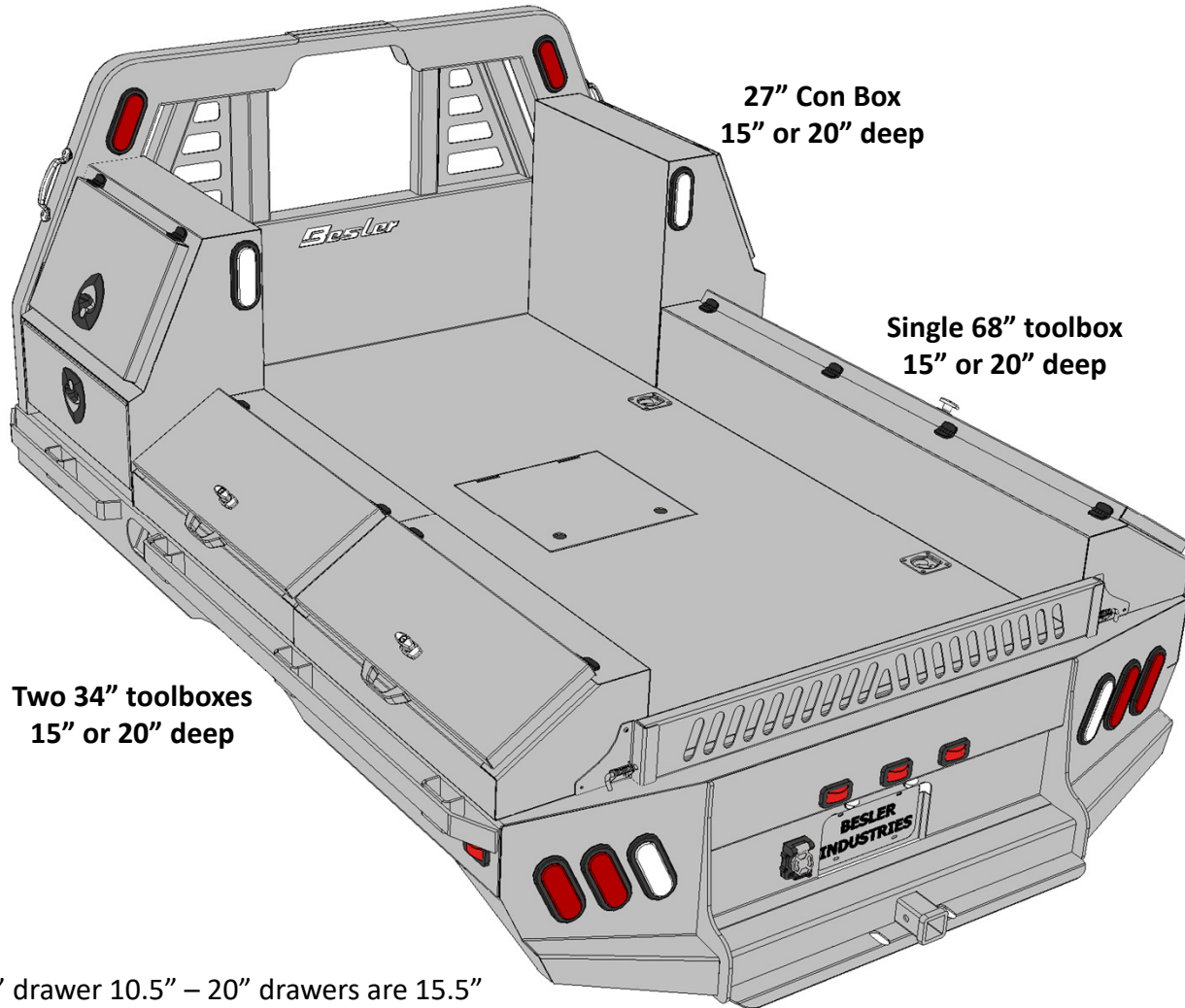
All toolboxes are modular and bolt to the bed so they can be setup however needed – 2 long boxes on either side, or 4 shorts on either side, or mixed.

**15" boxes leaves 50" in between**

**20" boxes leaves 40" in between**

### Toolboxes

Description	-	Part #
27"-15"deep LH		20305
27"-20"deep LH		20308
27"-15"deep RH		20306
27"-20"deep RH		20309
34"x15"deep		20315
34"x20"deep		20316
68"x15"deep		20324
68"x20"deep		20325

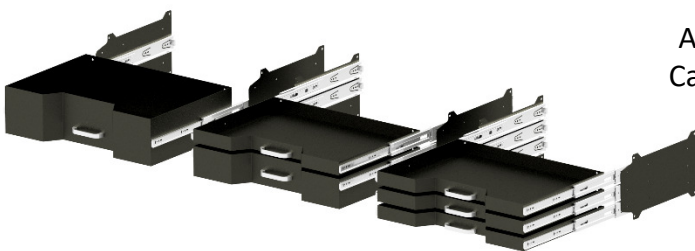


15" drawer 10.5" – 20" drawers are 15.5"

**Single drawer** - 22 x 10.5" x 5-3/4"

**Double drawer** - 1 drawers 22" x 10.5" x 3-5/8" & 1 Triple drawer

**Triple Drawer** – 3 drawers 22 x 10.5" x 1-9/16"



All Con boxes have mounts for drawers so they Can always be added later – same plate used for 1, 2, or 3 drawer setup



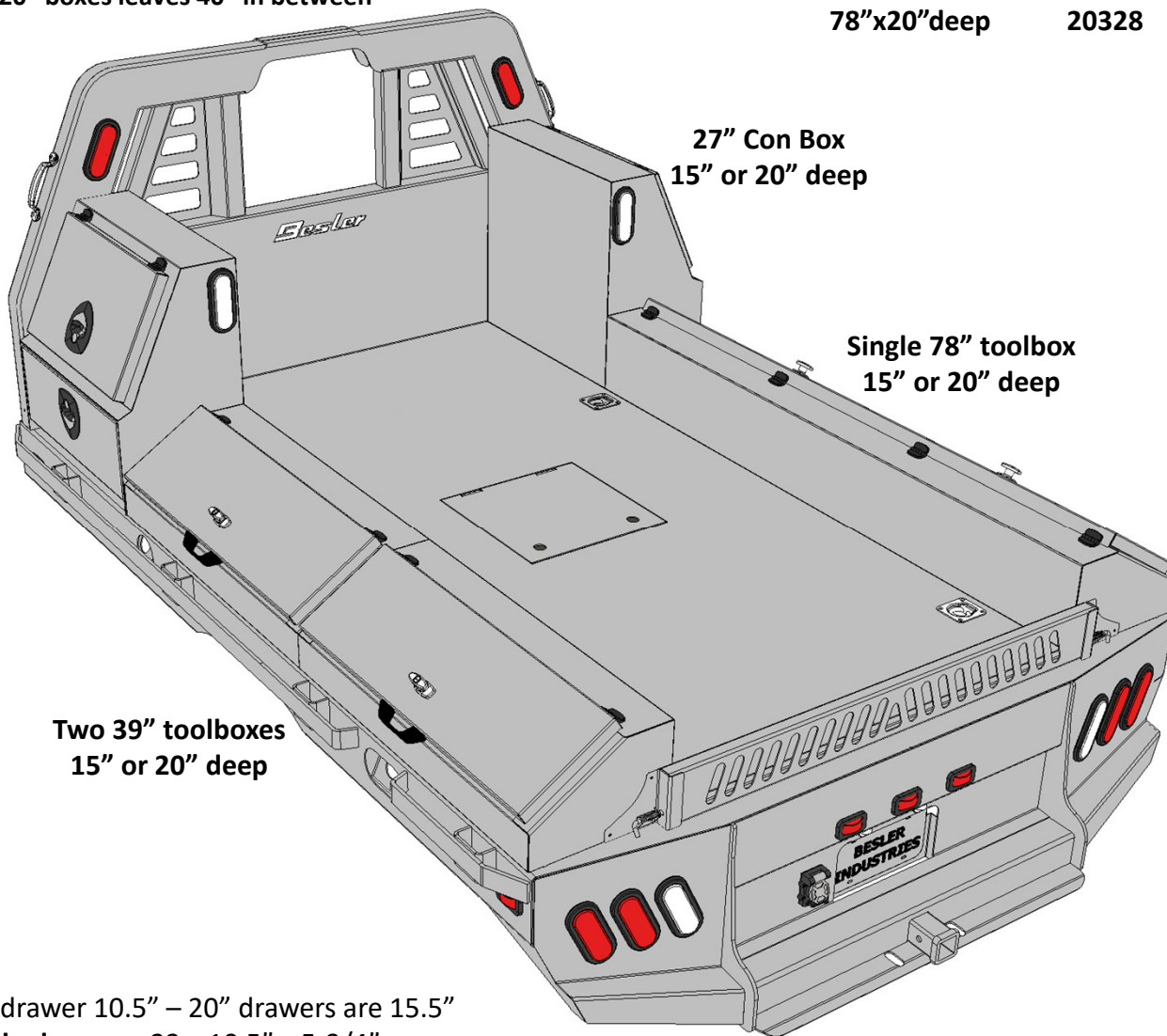
## Toolbox Options 6112

All toolboxes are modular and bolt to the bed so they can be setup however needed – 2 long boxes on either side, or 4 shorts on either side, or mixed.

15" boxes leaves 50" in between

20" boxes leaves 40" in between

Toolboxes		
Description	-	Part #
27"-15"deep LH		20305
27"-20"deep LH		20308
27"-15"deep RH		20306
27"-20"deep RH		20309
39"x15"deep		20318
39"x20"deep		20319
78"x15"deep		20327
78"x20"deep		20328

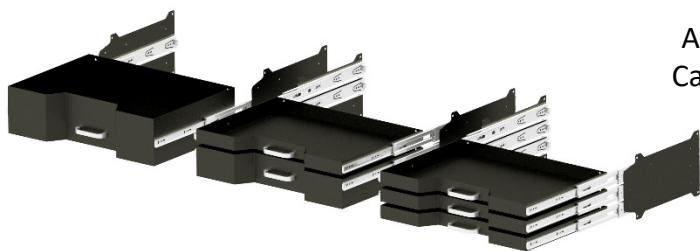


15" drawer 10.5" – 20" drawers are 15.5"

**Single drawer** - 22 x 10.5" x 5-3/4"

**Double drawer** - 1 drawers 22" x 10.5" x 3-5/8" & 1 Triple drawer

**Triple Drawer** – 3 drawers 22 x 10.5" x 1-9/16"



All Con boxes have mounts for drawers so they Can always be added later – same plate used for 1, 2, or 3 drawer setup



## Toolbox Options 6287

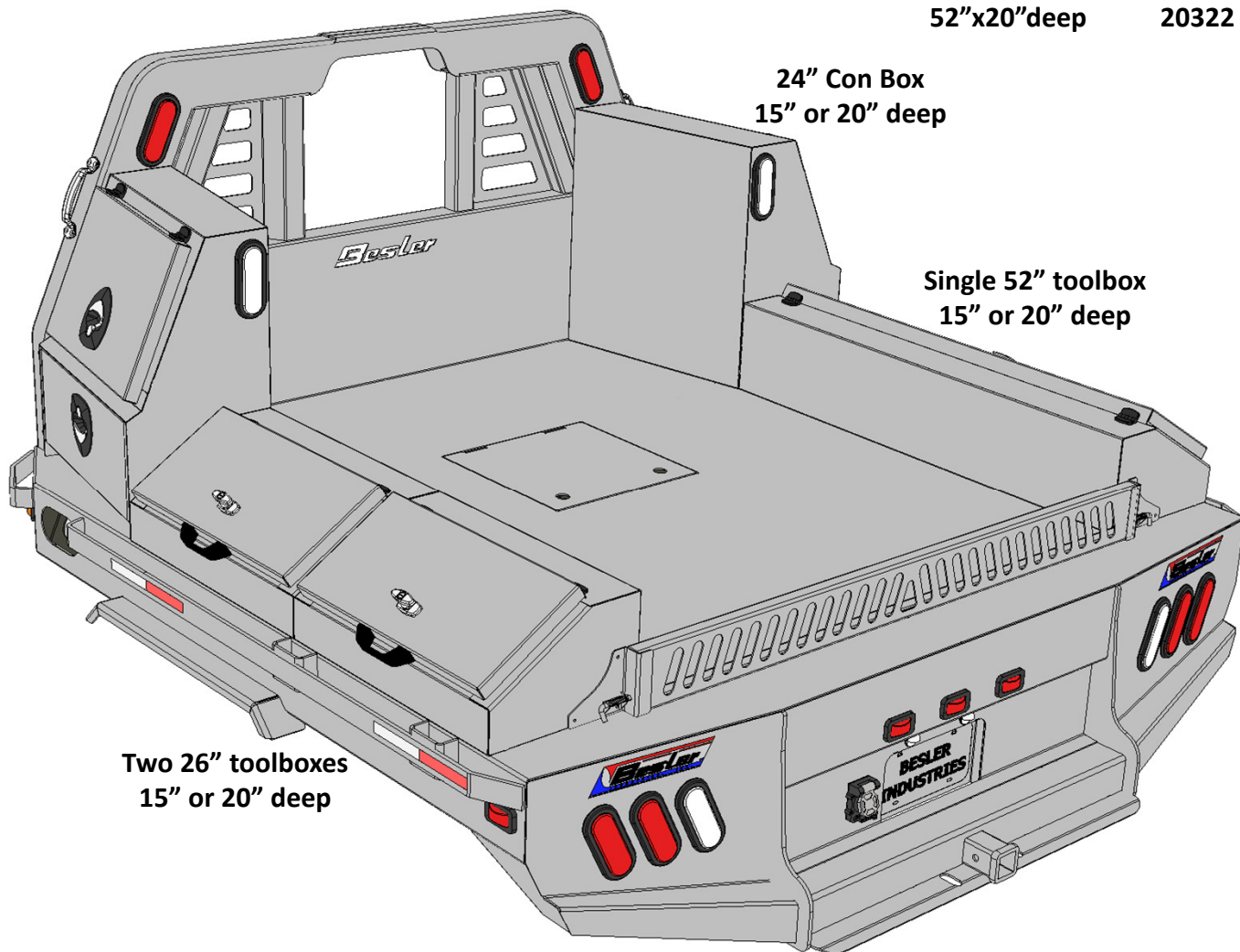
All toolboxes are modular and bolt to the bed so they can be setup however needed – 2 long boxes on either side, or 4 shorts on either side, or mixed.

**15" boxes leaves 60" in between – 51" at front**

**20" boxes leaves 50" in between – 41" at front**

### Toolboxes

Description	-	Part #
24"-15"deep LH		20294
24"-20"deep LH		20298
24"-15"deep RH		20295
24"-20"deep RH		20299
26"x15"deep		20312
26"x20"deep		20313
52"x15"deep		20321
52"x20"deep		20322

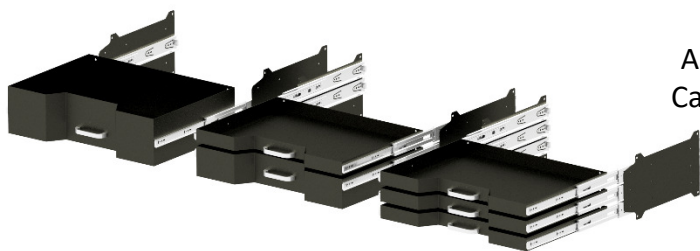


15" drawer 10.5" – 20" drawers are 15.5"

**Single drawer** 22 x 10.5" x 5-3/4"

**Double drawer** - 1 drawers 22" x 10.5" x 3-5/8" & 1 Triple drawer

**Triple Drawer** – 3 drawers 22 x 10.5" x 1-9/16"



All Con boxes have mounts for drawers so they can always be added later – same plate used for 1, 2, or 3 drawer setup



## Toolbox Options 62102

All toolboxes are modular and bolt to the bed so they can be setup however needed – 2 long boxes on either side, or 4 shorts on either side, or mixed.

**15" boxes leaves 60" in between 51" at front**

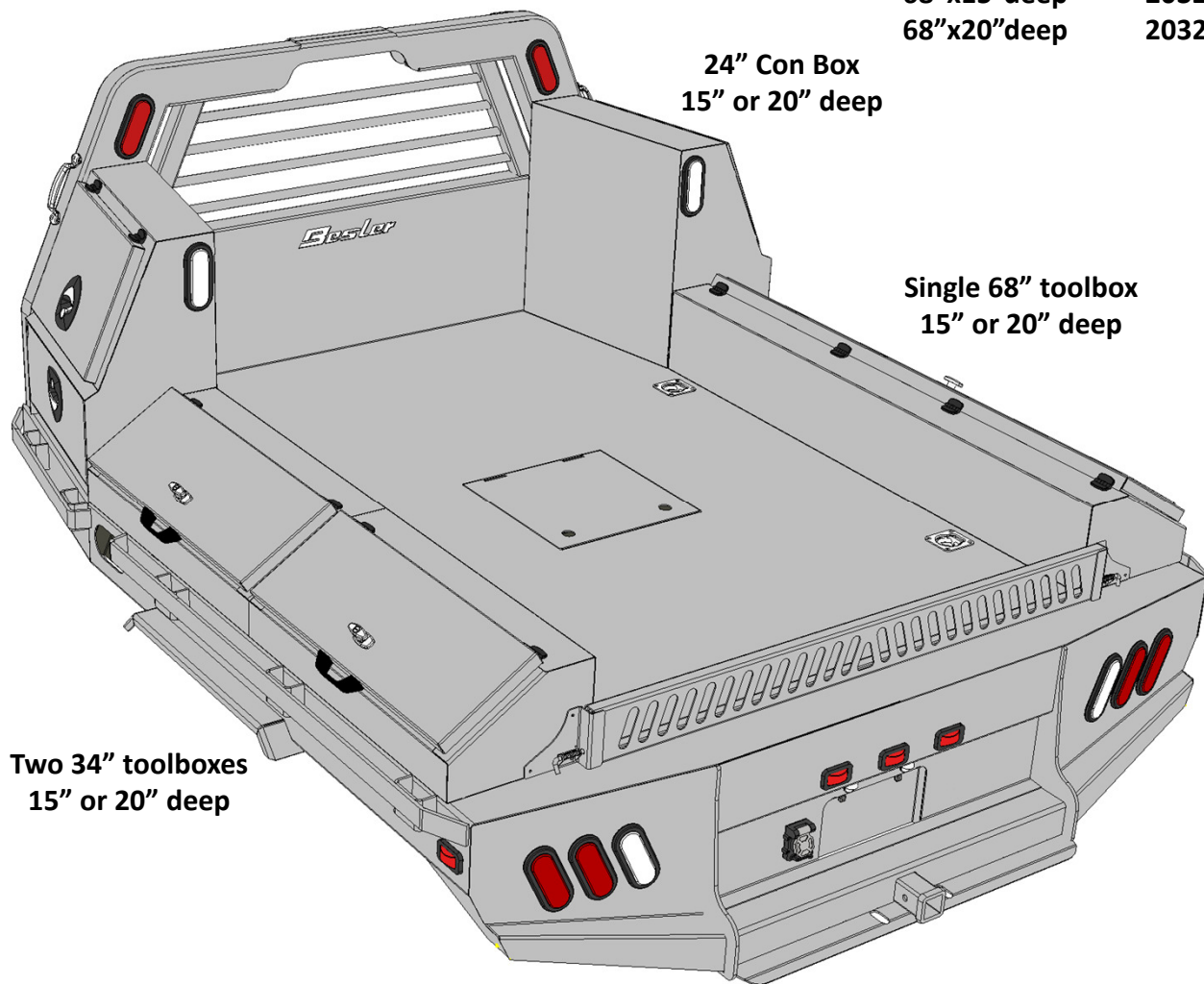
**20" boxes leaves 50" in between 41" at front**

### Toolboxes

Description	-	Part #
24"-15"deep LH		20294
24"-20"deep LH		20298
24"-15"deep RH		20295
24"-20"deep RH		20299
34"x15"deep		20315
34"x20"deep		20316
68"x15"deep		20324
68"x20"deep		20325

**24" Con Box**  
15" or 20" deep

**Single 68" toolbox**  
15" or 20" deep



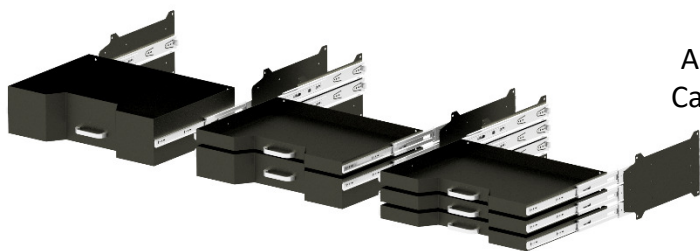
**Two 34" toolboxes**  
15" or 20" deep

15" drawer 10.5" – 20" drawers are 15.5"

**Single drawer** 22 x 10.5" x 5-3/4"

**Double drawer** - 1 drawers 22" x 10.5" x 3-5/8" & 1 Triple drawer

**Triple Drawer** – 3 drawers 22 x 10.5" x 1-9/16"



All Con boxes have mounts for drawers so they can always be added later – same plate used for 1, 2, or 3 drawer setup



## Toolbox Options 62112

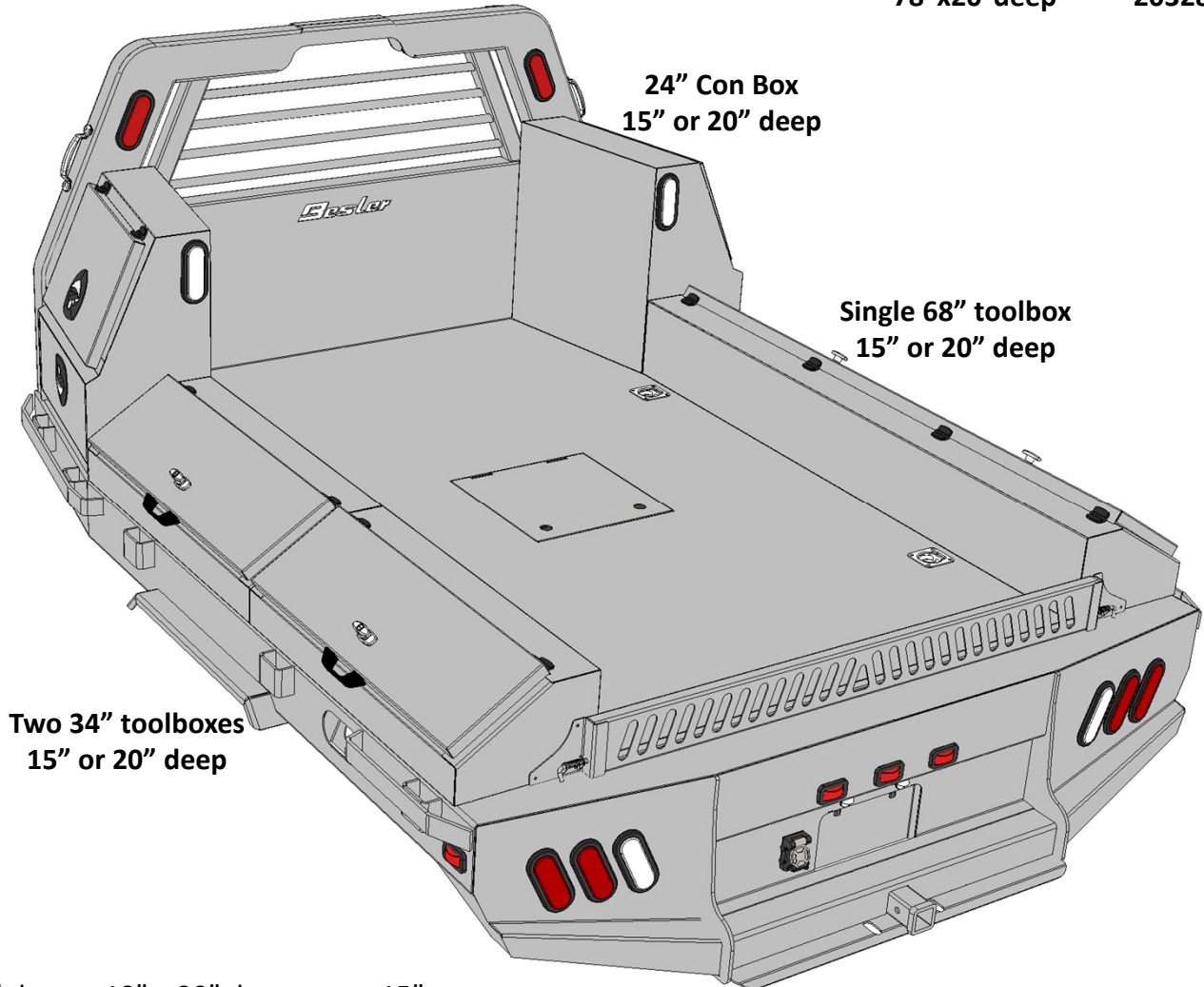
All toolboxes are modular and bolt to the bed so they can be setup however needed – 2 long boxes on either side, or 4 shorts on either side, or mixed.

15" boxes leaves 60" in between – 51" at front

20" boxes leaves 50" in between – 41" at front

### Toolboxes

Description	-	Part #
24"-15"deep LH		20294
24"-20"deep LH		20298
24"-15"deep RH		20295
24"-20"deep RH		20299
39"x15"deep		20318
39"x20"deep		20319
78"x15"deep		20327
78"x20"deep		20328



15" drawer 10" – 20" drawers are 15"

**Single drawer** 18-3/4" x 10" x 5-3/4"

**Double drawer** - 1 drawers 18-3/4" x 10" x 3-5/8" & 1 Triple drawer

**Triple Drawer** – 3 drawers 18-3/4" x 10" x 1-9/16"



All Con boxes have mounts for drawers so they can always be added later – same plate used for 1, 2, or 3 drawer setup

# BESLER INDUSTRIES, INC.

## BESLER FLATBED TWO YEAR LIMITED WARRANTY

### STATEMENT OF WARRANTY

#### 1) WHAT IS COVERED BY THIS WARRANTY:

Besler Industries, Inc. warrants to the original retail purchaser only, that all equipment, parts and accessories which it manufactures are free from defects in material or workmanship under normal use, service, proper setup and adjustment. The duration of this warranty is two (2) years from the date of delivery with some limitations on specific parts mentioned below.

This warranty is limited to repair or replacement of part or parts, to the original purchaser, found by the manufacturer, through the authorized selling dealer, to be defective in material or workmanship in the warranty period. This warranty shall be effective only when the part or parts have been authorized for return or replacement by Besler Industries, Inc., and returned prepaid by the dealer or purchaser to Besler Industries, Inc. Consult your dealer before removing any parts or making repair. For Warranty claim, notify the selling dealer.

#### 2) WHAT IS NOT COVERED BY THIS WARRANTY:

Besler Industries, Inc., does not warranty: (a) damage caused by use for purposes other than those for which it was designed: (b) repairs made by unauthorized persons: (c) damage caused by neglect, abuse, abnormal use, improper or unreasonable use, accident, or misuse: (d) damages caused by unauthorized attachments, alterations, or modifications: (e) damage caused by improper service, setup or adjustments: (f) Besler equipment which has had a serial numbers removed or made illegible: (g) normal wear (h) transportation to and from authorized dealer's place of business or Besler Industries, Inc.

#### 3) LIMITATIONS TO WARRANTY

The following parts are covered under the original warranty for the specified time indicated by each item.

Two (2) Years from time of purchase:  
Structure and welds

\*Warranty on merchandise not of Besler Industries, Inc., supplied in piece or in component assemblies will be dependent on the manufactures warranty, some limitations may apply.

#### 4) DISCLAIMER OF WARRANTY:

The foregoing warranties are in lieu of all other warranties of merchantability and fitness for a particular purpose. Any implied warranty of merchantability or fitness for a particular purpose is limited to the duration of this limited warranty. This warranty gives you specific legal rights, and you may also have other rights which vary from state to state.

5) Besler Industries, Inc. reserves the right to improve products through modifications and changes in design or material without being obligated to incorporate such changes in prior manufacture.

#### 6) WARRANTY REGISTRATION:

The Warranty registration card must be completed and forwarded to Besler Industries, Inc., Box B, Cambridge, NE 69022. Within 10 days following date of purchase. Warranty will not be granted unless a warranty card is on file at Besler Industries, Inc. The Date of purchase constitutes delivery.