

Besler Industries Inc.

SETUP AND PARTS MANUAL

7000 SERIES

ROLLING STALK MANAGER

RIGID and FOLDING TOOLBAR

Serial No. 10197 - XXXXX

Rigid Model No's.

70430 R 4 Row 30" Spacing

70436 R 4 Row 36" Spacing

70630 R 6 Row 30" Spacing

70636 R 6 Row 36" Spacing

70830 R 8 Row 30" Spacing

70836 R 8 Row 36" Spacing

71030 R 10 Row 30" Spacing

71036 R 10 Row 36" Spacing

71230 R 12 Row 30" Spacing

Folding Model No's.

70636 F 6 Row 36" Spacing

70830 F 8 Row 30" Spacing

70836 F 8 Row 36" Spacing

71030 F 10 Row 30" Spacing

71036 F 10 Row 36" Spacing

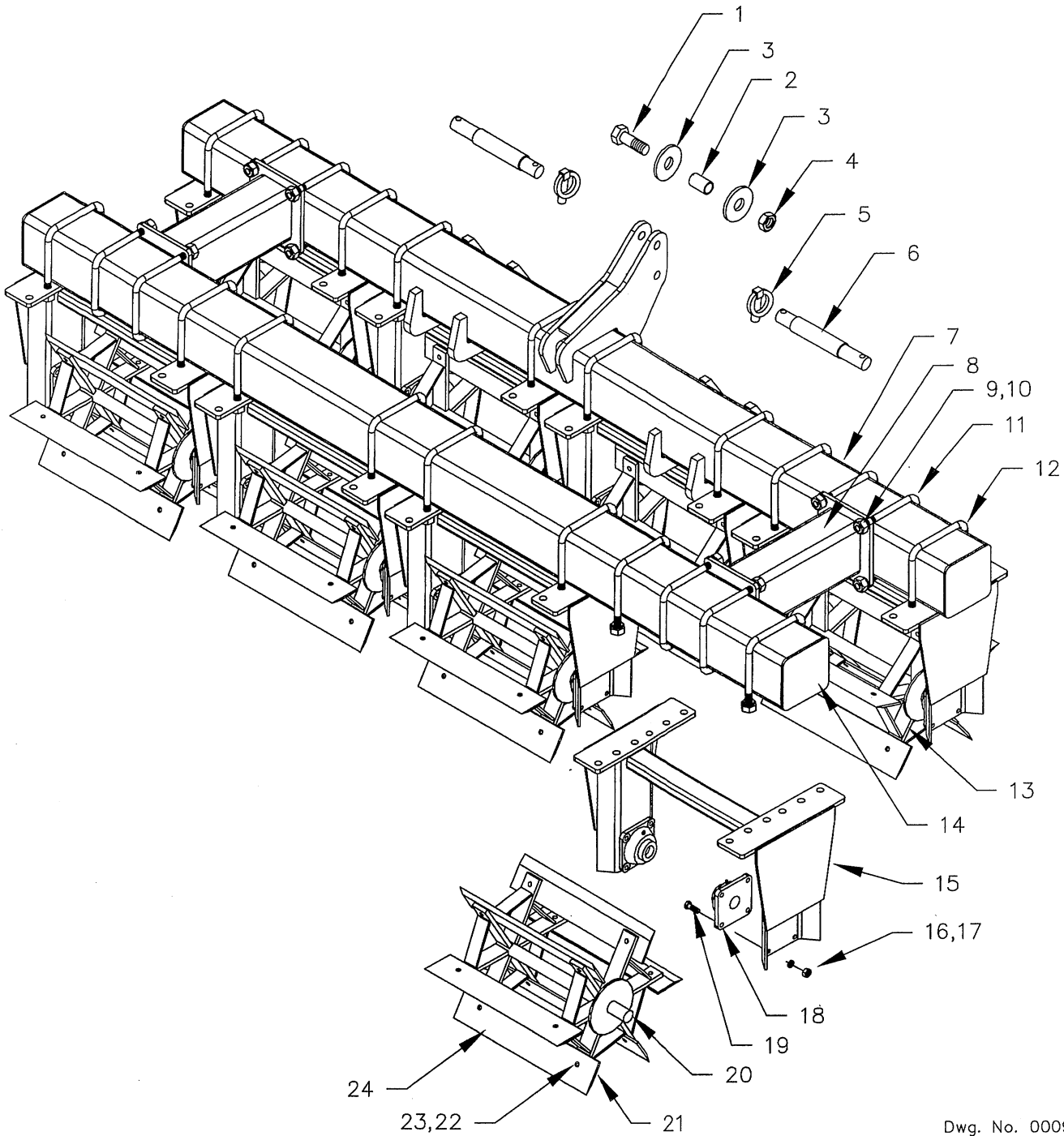
71230 F 12 Row 30" Spacing

71236 F 12 Row 36" Spacing

71630 F 16 Row 30" Spacing

71636 F 16 Row 36" Spacing

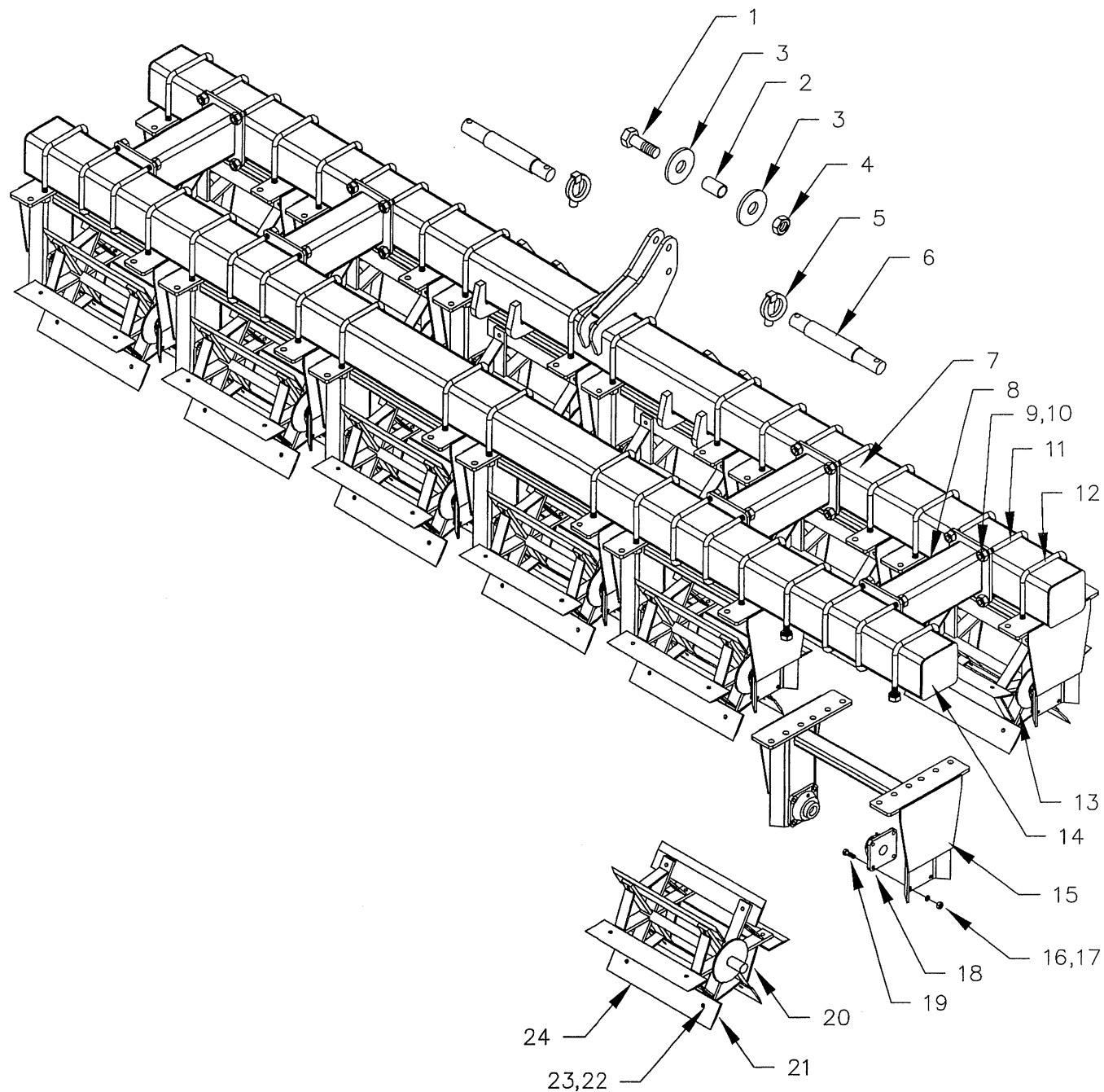
70430 / 70436



Dwg. No. 00091

REF. NO.	PART NUMBER	DESCRIPTION	No. REQ'D	REF. NO.	PART NUMBER	DESCRIPTION	No. REQ'D
1	90110	BOLT 1"NC x 4-3/8" ALT.	1	13	10638	ROTOR - 5 BLADE	4
2	90109	TOP LINK BUSHING	1	14	10327	TOOL BAR 10' 70430	1
3	90112	WASHER 1" FLAT	2		10328	TOOL BAR 12' 70436	1
4	90111	NUT 1"NC DEFORMED	1	15	10640	STANDARD	8
5	90115	LYNCH PIN 7/16 x 1-1/2	2	16	90134	WASHER 1/2" LOCK	64
6	90113	HITCH PIN CAT. 2 & 3	2	17	90138	NUT 1/2"NC	64
7	10306	FRONT TOOL BAR 10' 70430	1	18	10620	BEARING BLOCK w/LOCK COLLAR & ZERK	16
	10307	FRONT TOOL BAR 12' 70436	1	19	90136	BOLT 1/2"NC x 1-1/2"	64
8	10131	SPACER BAR	2	20	10639	ROTOR - 6 BLADE	4
9	90158	WASHER 3/4" LOCK	48	21	90136	BOLT 1/2"NC x 1-1/2"	88
10	90160	NUT 3/4"NC	48	22	90134	WASHER 1/2" LOCK	88
11	90139	U-BOLT 3/4"NC X 7-1/8" X 9"	8	23	90138	NUT 1/2"NC	88
12	90140	U-BOLT 3/4"NC X 7-5/16" X 9"	16	24	10603	BLADE 20-3/4"	44

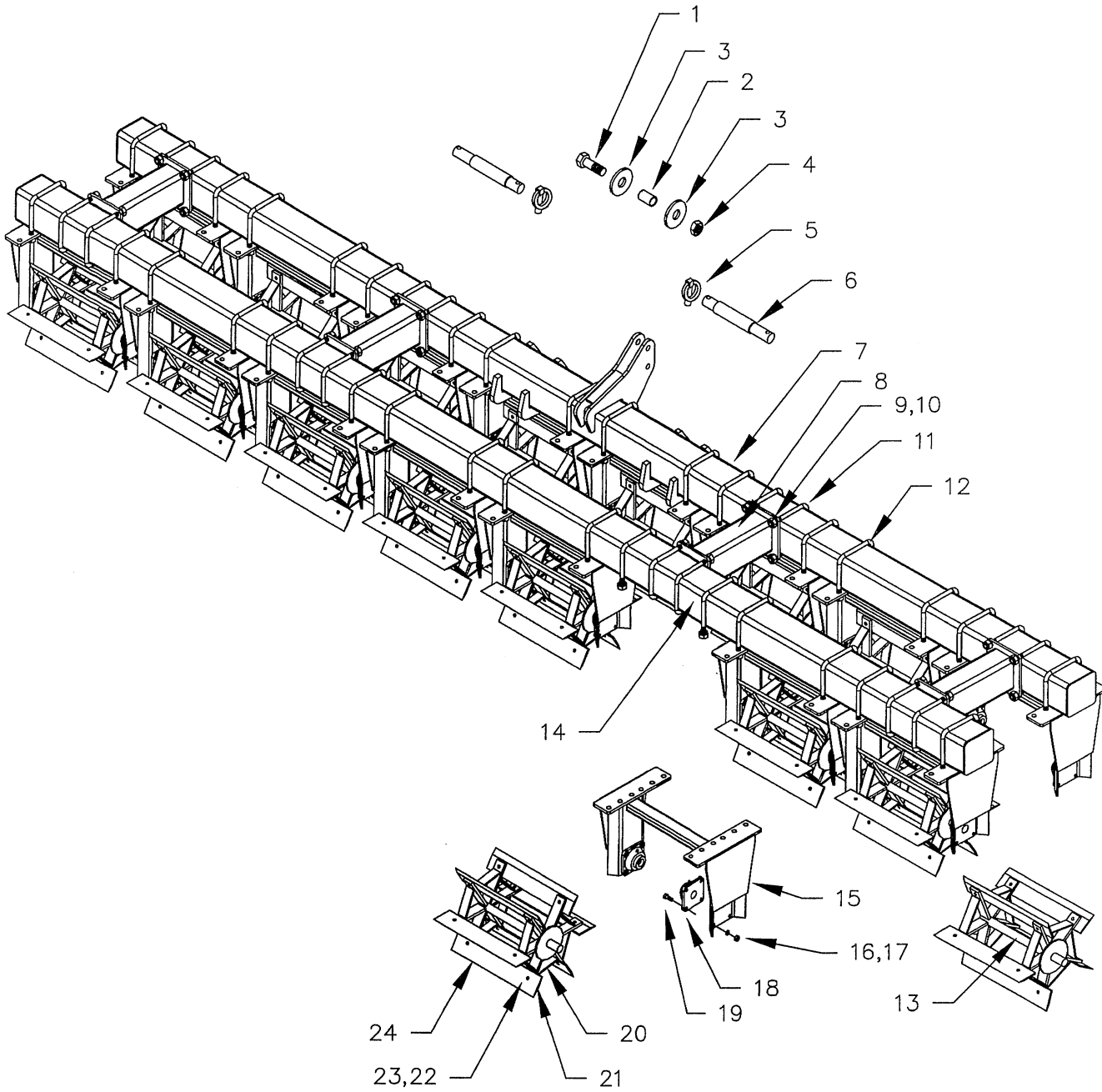
70630 / 70636



Dwg. No. 00092

REF. NO.	PART NUMBER	DESCRIPTION	No. REQ'D	REF. NO.	PART NUMBER	DESCRIPTION	No. REQ'D
1	90110	BOLT 1"NC x 4-3/8" ALT.	1	13	10638	ROTOR - 5 BLADE	6
2	90109	TOP LINK BUSHING	1	14	10329	TOOL BAR 15' 70630	1
3	90112	WASHER 1" FLAT	2		10330	TOOL BAR 18' 70636	1
4	90111	NUT 1"NC DEFORMED	1	15	10640	STANDARD	12
5	90115	LYNCH PIN 7/16 x 1-1/2	2	16	90134	WASHER 1/2" LOCK	96
6	90113	HITCH PIN CAT. 2 & 3	2	17	90138	NUT 1/2"NC	96
7	10308	FRONT TOOL BAR 15' 70630	1	18	10620	BEARING BLOCK w/LOCK COLLAR & ZERK	24
	10309	FRONT TOOL BAR 18' 70636	1	19	90136	BOLT 1/2"NC x 1-1/2"	96
8	10131	SPACER BAR	4	20	10639	ROTOR - 6 BLADE	6
9	90158	WASHER 3/4" LOCK	80	21	90136	BOLT 1/2"NC x 1-1/2"	132
10	90160	NUT 3/4"NC	80	22	90134	WASHER 1/2" LOCK	132
11	90139	U-BOLT 3/4"NC X 7-1/8" X 9"	16	23	90138	NUT 1/2"NC	132
12	90140	U-BOLT 3/4"NC X 7-5/16" X 9"	24	24	10603	BLADE 20-3/4"	66

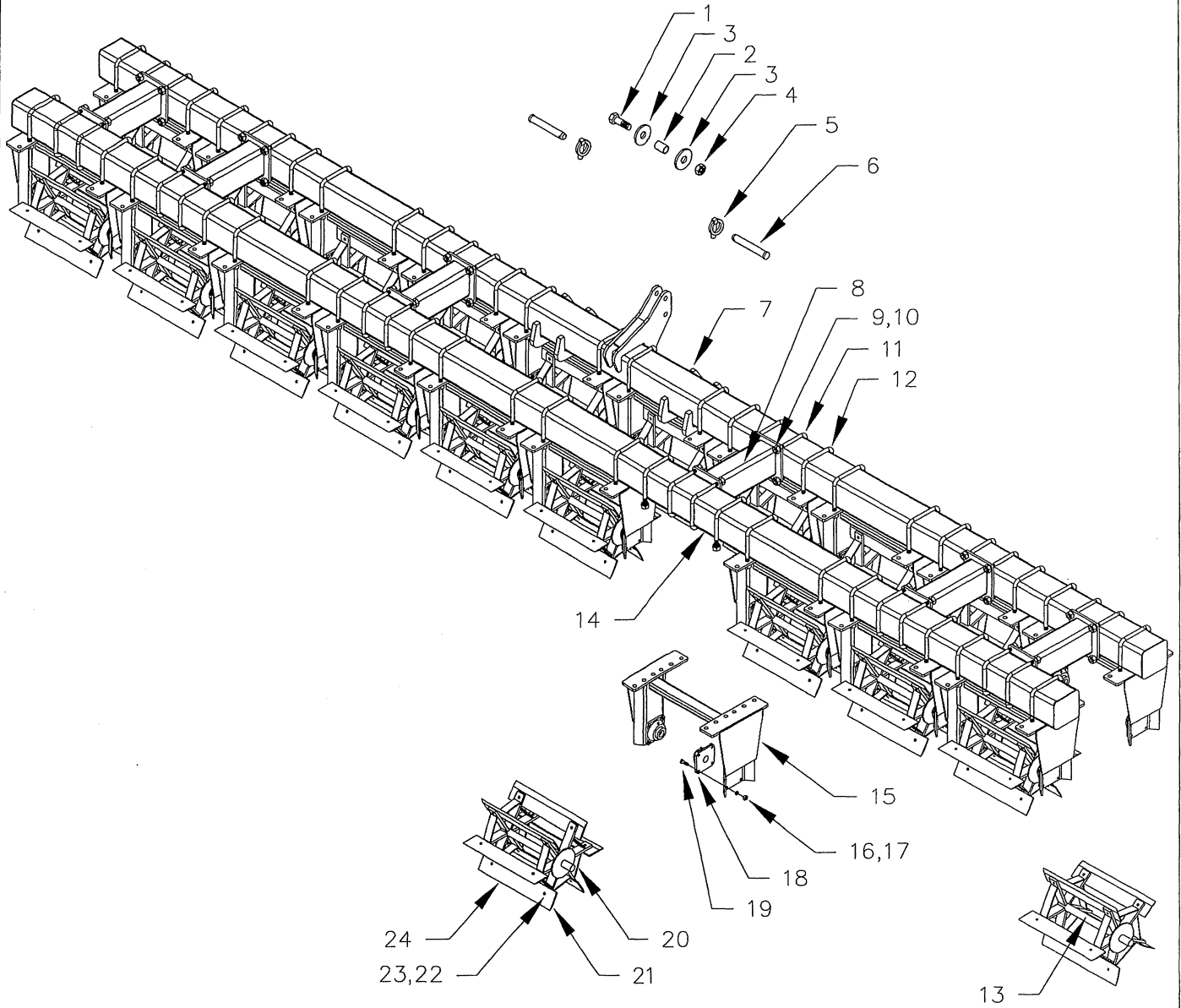
70830 / 70836



Dwg. No. 00093

REF. NO.	PART NUMBER	DESCRIPTION	No. REQ'D	REF. NO.	PART NUMBER	DESCRIPTION	No. REQ'D
1	90110	BOLT 1"NC x 4-3/8" ALT.	1	13	10638	ROTOR - 5 BLADE	8
2	90109	TOP LINK BUSHING	1	14	10331	TOOL BAR 20' 70830	1
3	90112	WASHER 1" FLAT	2		10332	TOOL BAR 24' 70836	1
4	90111	NUT 1"NC DEFORMED	1	15	10640	STANDARD	16
5	90115	LYNCH PIN 7/16 x 1-1/2	2	16	90134	WASHER 1/2" LOCK	128
6	90113	HITCH PIN CAT. 2 & 3	2	17	90138	NUT 1/2"NC	128
7	10310	FRONT TOOL BAR 20' 70830	1	18	10620	BEARING BLOCK w/LOCK COLLAR & ZERK	32
	10311	FRONT TOOL BAR 24' 70836	1	19	90136	BOLT 1/2"NC x 1-1/2"	128
8	10131	SPACER BAR	4	20	10639	ROTOR - 6 BLADE	8
9	90158	WASHER 3/4" LOCK	96	21	90136	BOLT 1/2"NC x 1-1/2"	176
10	90160	NUT 3/4"NC	96	22	90134	WASHER 1/2" LOCK	176
11	90139	U-BOLT 3/4"NC X 7-1/8" X 9"	16	23	90138	NUT 1/2"NC	176
12	90140	U-BOLT 3/4"NC X 7-5/16" X 9"	32	24	10603	BLADE 20-3/4"	88

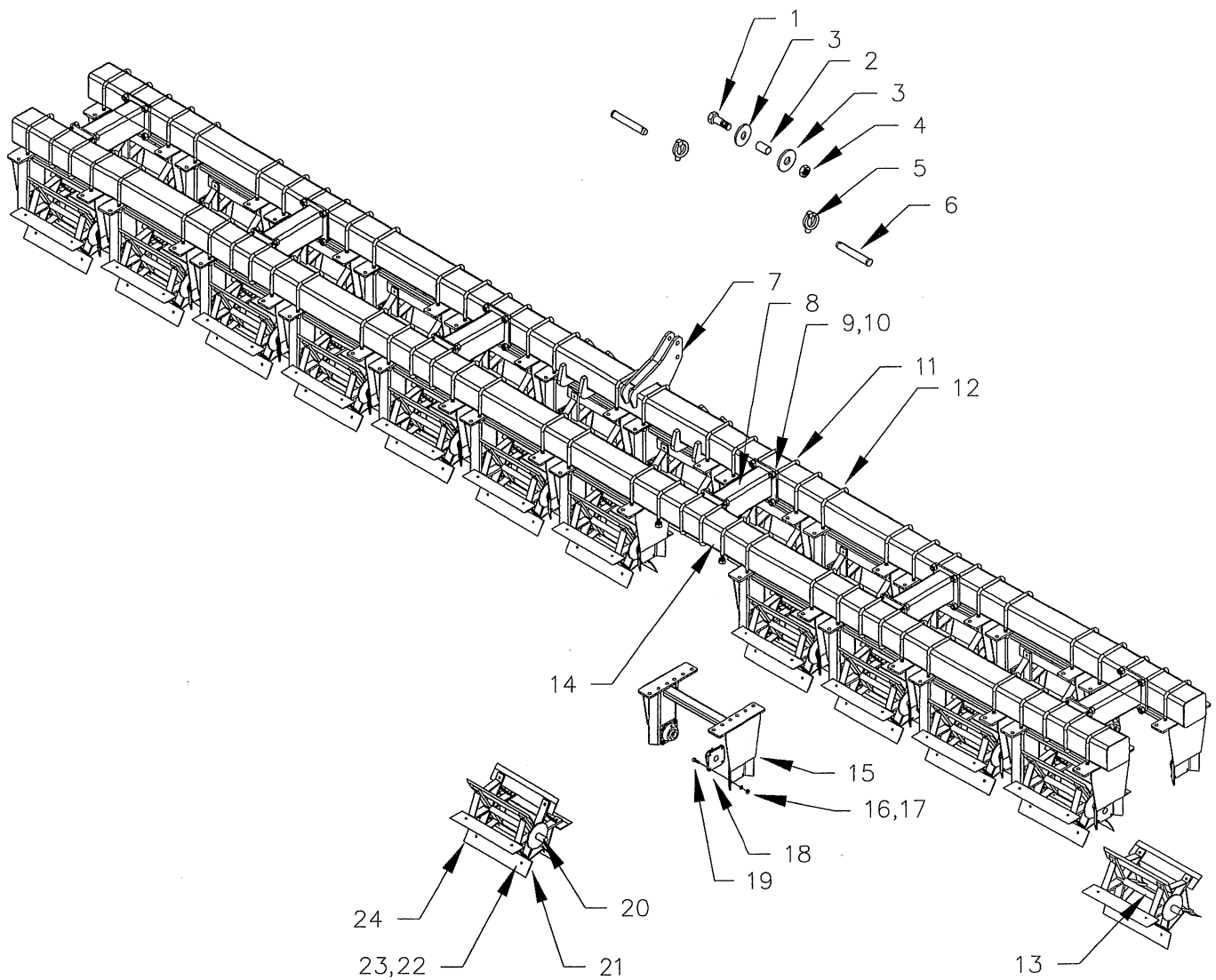
71030 / 71036



Dwg. No. 00094

REF. NO.	PART NUMBER	DESCRIPTION	No. REQ'D	REF. NO.	PART NUMBER	DESCRIPTION	No. REQ'D
1	90110	BOLT 1"NC x 4-3/8" ALT.	1	13	10638	ROTOR - 5 BLADE	10
2	90109	TOP LINK BUSHING	1	14	10333	TOOL BAR 25' 71030	1
3	90112	WASHER 1" FLAT	2		10334	TOOL BAR 30' 71036	1
4	90111	NUT 1"NC DEFORMED	1	15	10640	STANDARD	20
5	90115	LYNCH PIN 7/16 x 1-1/2	2	16	90134	WASHER 1/2" LOCK	160
6	90114	HITCH PIN CAT. 3	2	17	90138	NUT 1/2"NC	160
7	10312	FRONT TOOL BAR 25' 71030	1	18	10620	BEARING BLOCK w/LOCK COLLAR & ZERK	40
	10313	FRONT TOOL BAR 30" 71036	1	19	90136	BOLT 1/2"NC x 1-1/2"	160
8	10131	SPACER BAR	6	20	10639	ROTOR - 6 BLADE	10
9	90158	WASHER 3/4" LOCK	128	21	90136	BOLT 1/2"NC x 1-1/2"	220
10	90160	NUT 3/4"NC	128	22	90134	WASHER 1/2" LOCK	220
11	90139	U-BOLT 3/4"NC X 7-1/8" X 9"	24	23	90138	NUT 1/2"NC	220
12	90140	U-BOLT 3/4"NC X 7-5/16" X 9"	40	24	10603	BLADE 20-3/4"	110

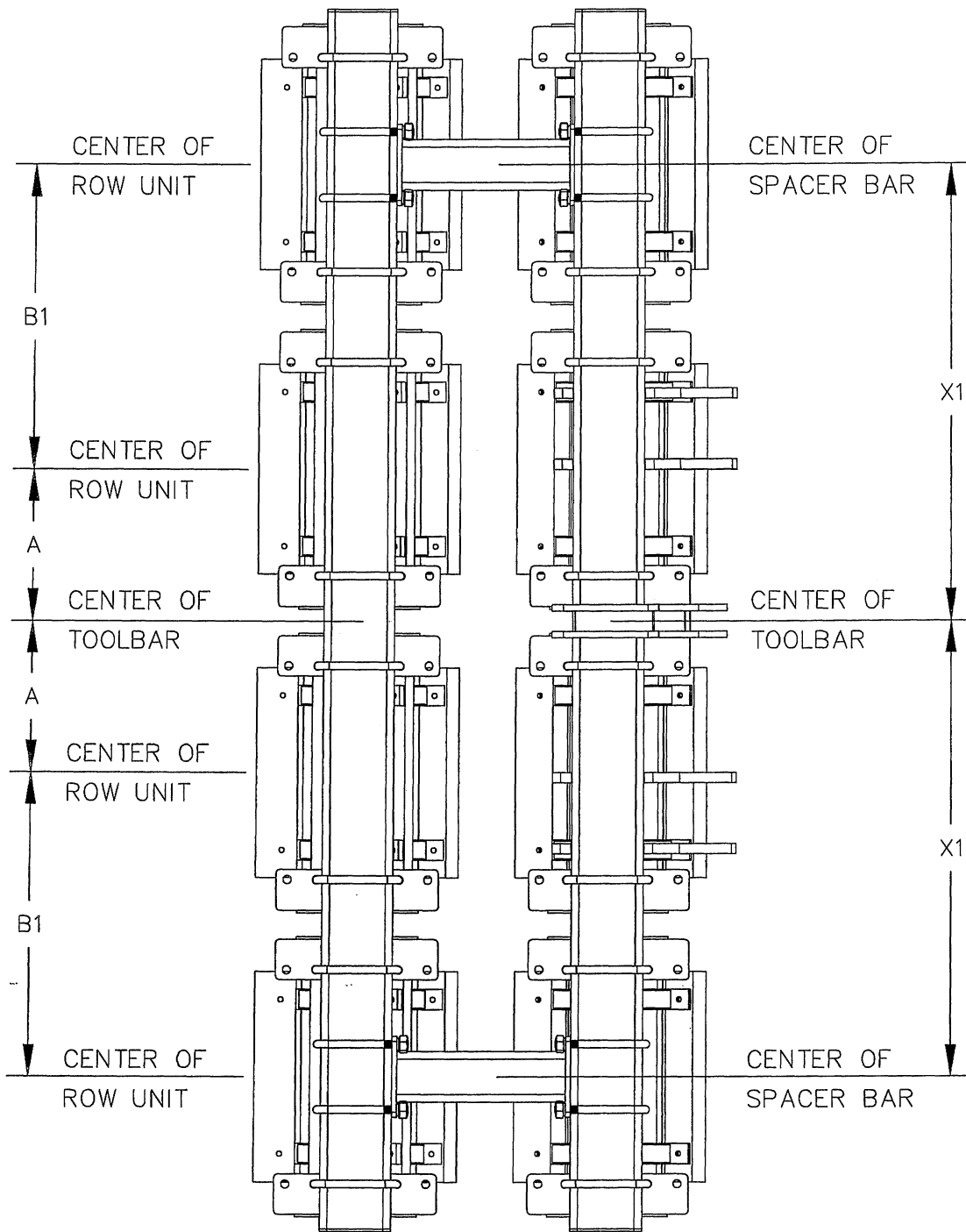
71230



Dwg. No. 00095

REF. NO.	PART NUMBER	DESCRIPTION	No. REQ'D	REF. NO.	PART NUMBER	DESCRIPTION	No. REQ'D
1	90110	BOLT 1"NC x 4-3/8" ALT.	1	13	10638	ROTOR - 5 BLADE	12
2	90109	TOP LINK BUSHING	1	14	10335	TOOL BAR 30' 71230	1
3	90112	WASHER 1" FLAT	2	15	10640	STANDARD	24
4	90111	NUT 1"NC DEFORMED	1	16	90134	WASHER 1/2" LOCK	192
5	90115	LYNCH PIN 7/16 x 1-1/2	2	17	90138	NUT 1/2"NC	192
6	90114	HITCH PIN CAT. 3	2	18	10620	BEARING BLOCK w/LOCK COLLAR & ZERK	48
7	10314	FRONT TOOL BAR 30' 71230	1	19	90136	BOLT 1/2"NC x 1-1/2"	192
8	10131	SPACER BAR	6	20	10639	ROTOR - 6 BLADE	12
9	90158	WASHER 3/4" LOCK	144	21	90136	BOLT 1/2"NC x 1-1/2"	264
10	90160	NUT 3/4"NC	144	22	90134	WASHER 1/2" LOCK	264
11	90139	U-BOLT 3/4"NC X 7-1/8" X 9"	24	23	90138	NUT 1/2"NC	264
12	90140	U-BOLT 3/4"NC X 7-5/16" X 9"	48	24	10603	BLADE 20-3/4"	132

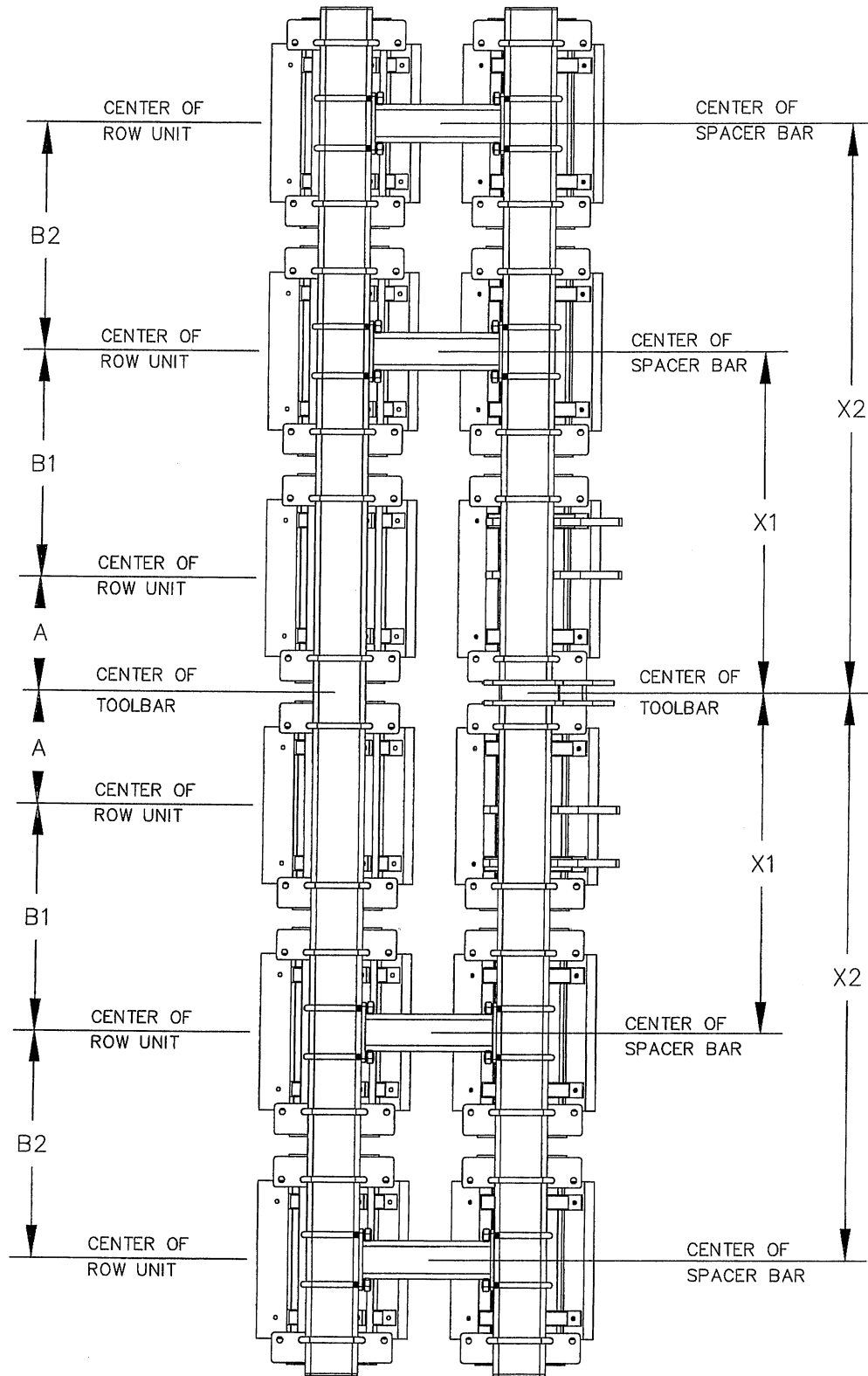
70430 / 70436



Dwg. No. 00126

MODEL NO.	A	B1	B2	B3	B4	B5	B7	X1	X2	X3	X4
70430R	15	30						45			
70436R	18	36						54			

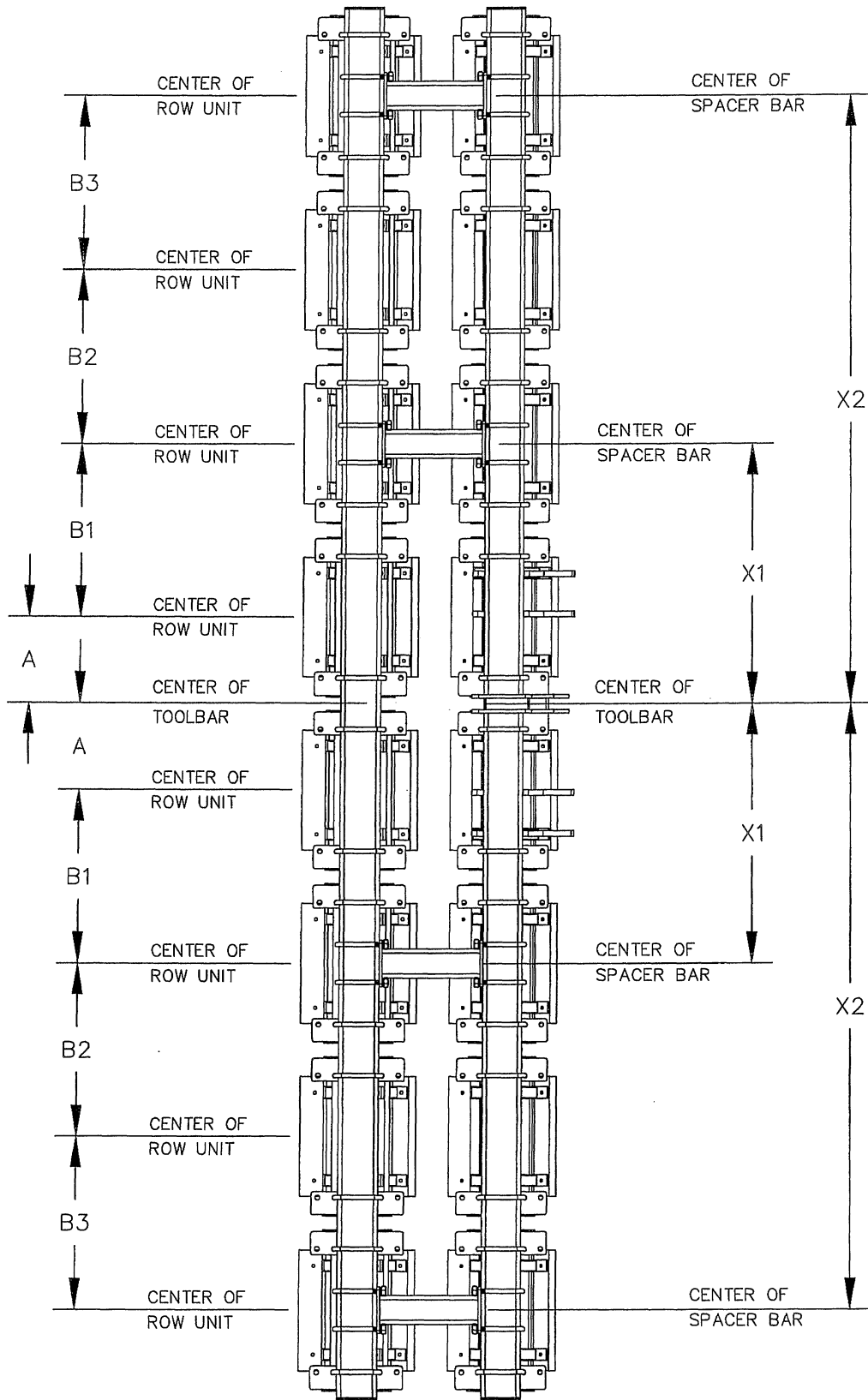
70630 / 70636



Dwg. No. 00127

MODEL NO.	A	B1	B2	B3	B4	B5	B7	X1	X2	X3	X4
70630R	15	30	30					45	75		
70636R	18	36	36					54	90		

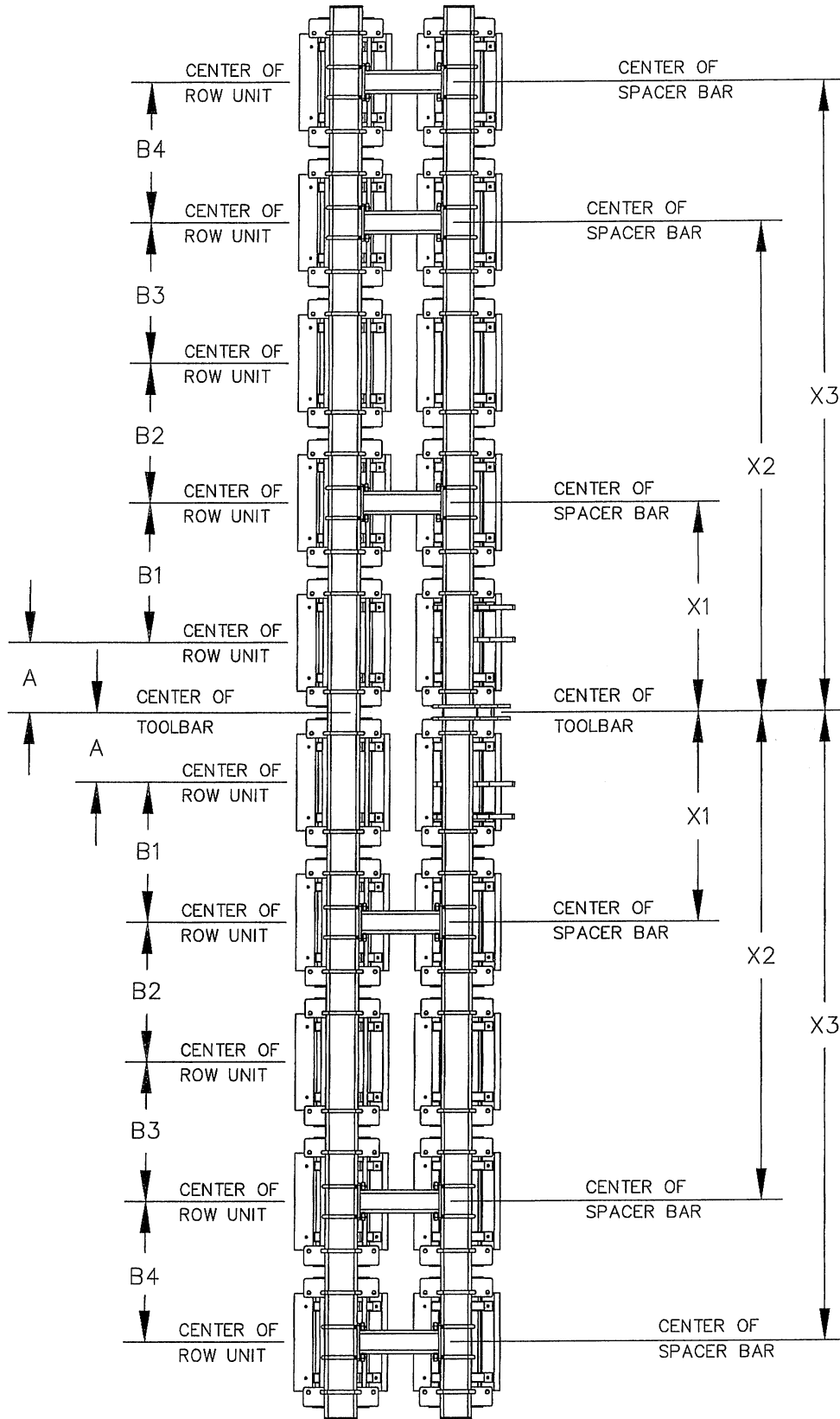
70830 / 70836



Dwg. No. 00128

MODEL NO.	A	B1	B2	B3	B4	B5	B7	X1	X2	X3	X4
70830R	15	30	30	30				45	105		
70836R	18	36	36	36				54	126		

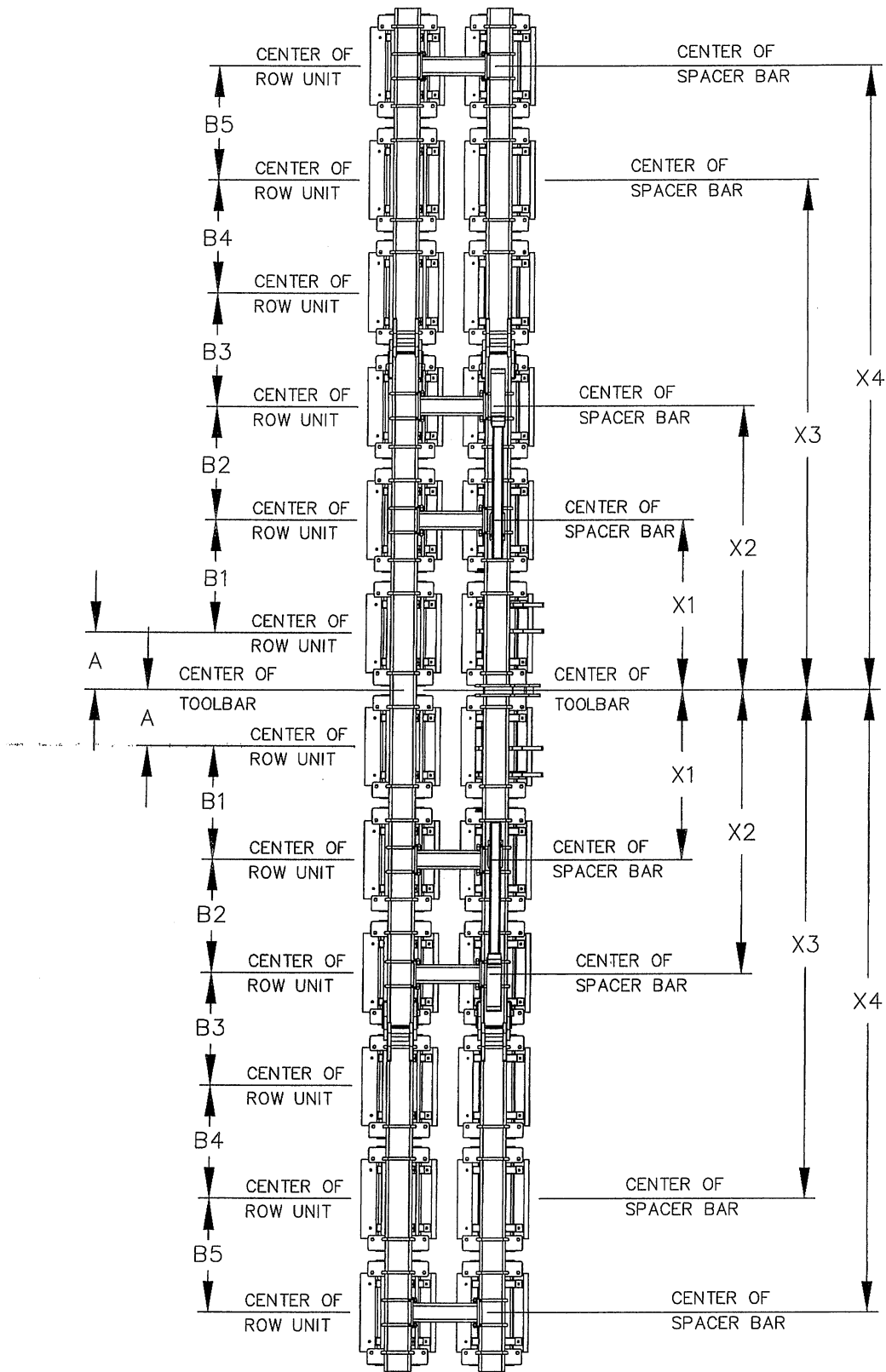
71030 / 71036



Dwg. No. 00129

MODEL NO.	A	B1	B2	B3	B4	B5	B7	X1	X2	X3	X4
71030R	15	30	30	30	30			45	105	135	
71036R	18	36	36	36	36			54	126	162	

71230 / 71236



Dwg. No. 00136

MODEL NO.	A	B1	B2	B3	B4	B5	B6	X1	X2	X3	X4
71230F	15	30	30	30-1/4	29-3/4	30		45	75-1/4	---	165
71236F	18	36-1/4	36-1/4	36-7/8	34-5/8	36		49-1/4	93-1/4	162	198