

# *Besler Industries Inc.*

## SETUP AND PARTS MANUAL

**RS2000**

**ROOT SLICER**

**RIGID TOOLBAR**

**PARALLEL LINKAGE ROW UNITS**

### **Model No's.**

<b>20430RP</b>	<b>4 Row</b>	<b>30" Spacing</b>
<b>20436RP</b>	<b>4 Row</b>	<b>36" Spacing</b>
<b>20630RP</b>	<b>6 Row</b>	<b>30" Spacing</b>
<b>20636RP</b>	<b>6 Row</b>	<b>36" Spacing</b>
<b>20640RP</b>	<b>6 Row</b>	<b>40" Spacing</b>
<b>20830RP</b>	<b>8 Row</b>	<b>30" Spacing</b>
<b>20836RP</b>	<b>8 Row</b>	<b>36" Spacing</b>
<b>20840RP</b>	<b>8 Row</b>	<b>40" Spacing</b>
<b>21030RP</b>	<b>10 Row</b>	<b>30" Spacing</b>
<b>21036RP</b>	<b>10 Row</b>	<b>36" Spacing</b>
<b>21230RP</b>	<b>12 Row</b>	<b>30" Spacing</b>





**Set-up and Parts Manual**  
**2000 Series**  
**Root Slicer**  
**Rigid Toolbar**  
**Parallel Linkage Row Units**

Please fill out the attached warranty card and return to Besler Industries, Inc.

Note: The serial number and model number of the unit can be found on the 3-point attachment of the machine.

Keep the following information for your own record:

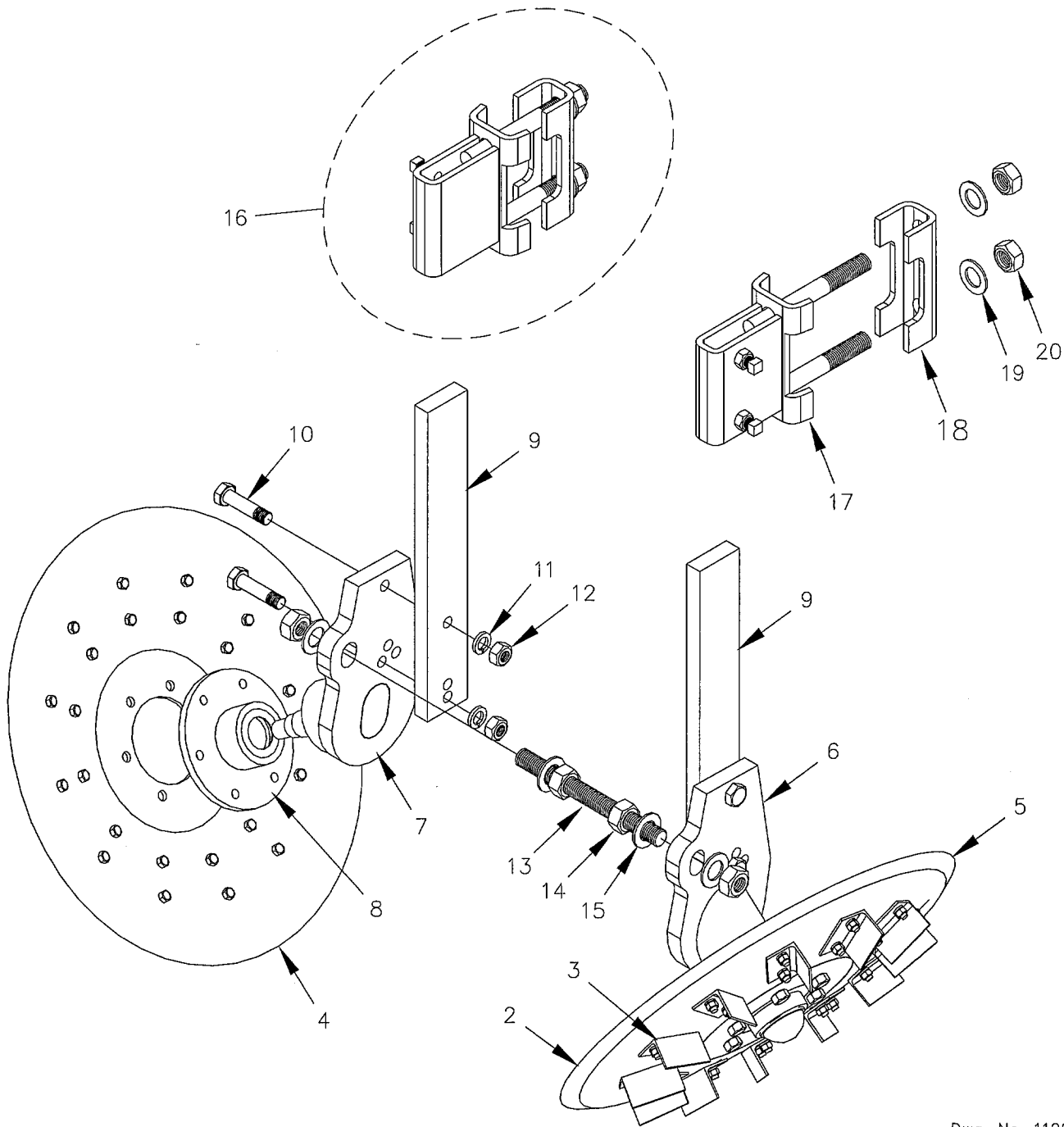
Name of Dealer: \_\_\_\_\_

Date of Purchase: \_\_\_\_\_

Model Number: \_\_\_\_\_

Serial Number: \_\_\_\_\_

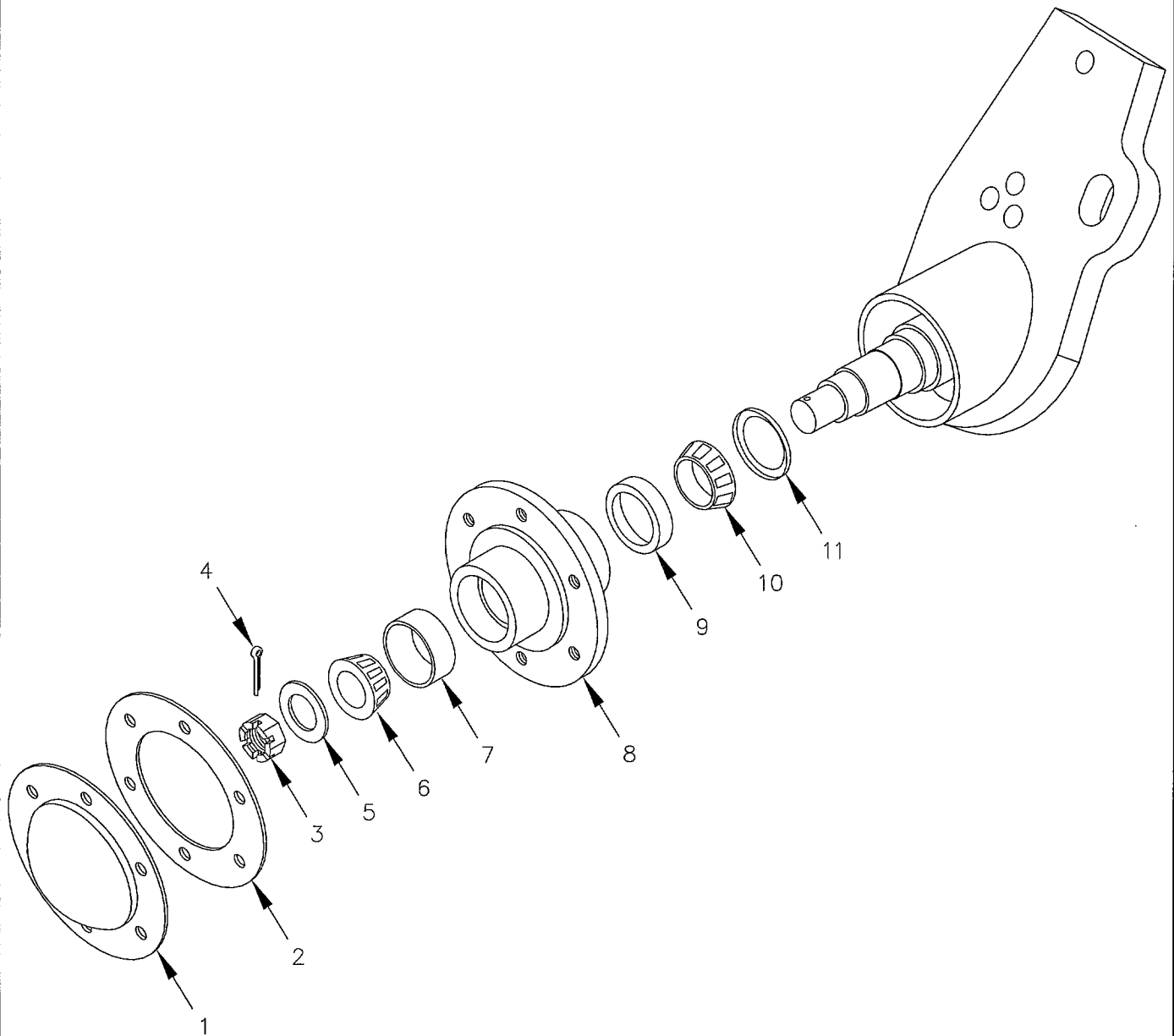
# RS2000 PARALLEL ROW UNIT with 4" X 4" CLAMP



Dwg. No. 11229

REF. NO.	PART NUMBER	DESCRIPTION	No. REQ'D	REF. NO.	PART NUMBER	DESCRIPTION	No. REQ'D
1	11039	PARALLEL ROW UNIT COMPLETE	--	11	90123	WASHER 5/8" LOCK	4
		ITEMS 4 THRU 16 AND 21		12	90137	NUT 5/8"NC	4
2	20010	BLADE 24" w/o ANGLES	--	13	11011	THD. ROD 1"NC	1
3	11003	BLADE ANGLE ONLY	--	14	90148	NUT 1"NC	4
4	11002	BLADE 24" with ANGLES - LEFT	1	15	90220	WASHER 1" FLAT	4
5	11001	BLADE 24" with ANGLES - RIGHT	1	16	11019	4" X 4" CLAMP COMPLETE	2
6	11004	AXLE WELDMENT - RIGHT	1	17	11020	CLAMP 4" X 4"	--
7	11005	AXLE WELDMENT - LEFT	1	18	11024	CLAMP BRACKET 4" X 4"	--
8	10611	HUB ONLY (SEE Dwg. No. 11125)	--	19	90220	WASHER 1" FLAT	--
9	11012	VERT. HEIGHT BAR	2	20	90148	NUT 1"NC	--
10	90151	BOLT 5/8"NC X 3"	4				

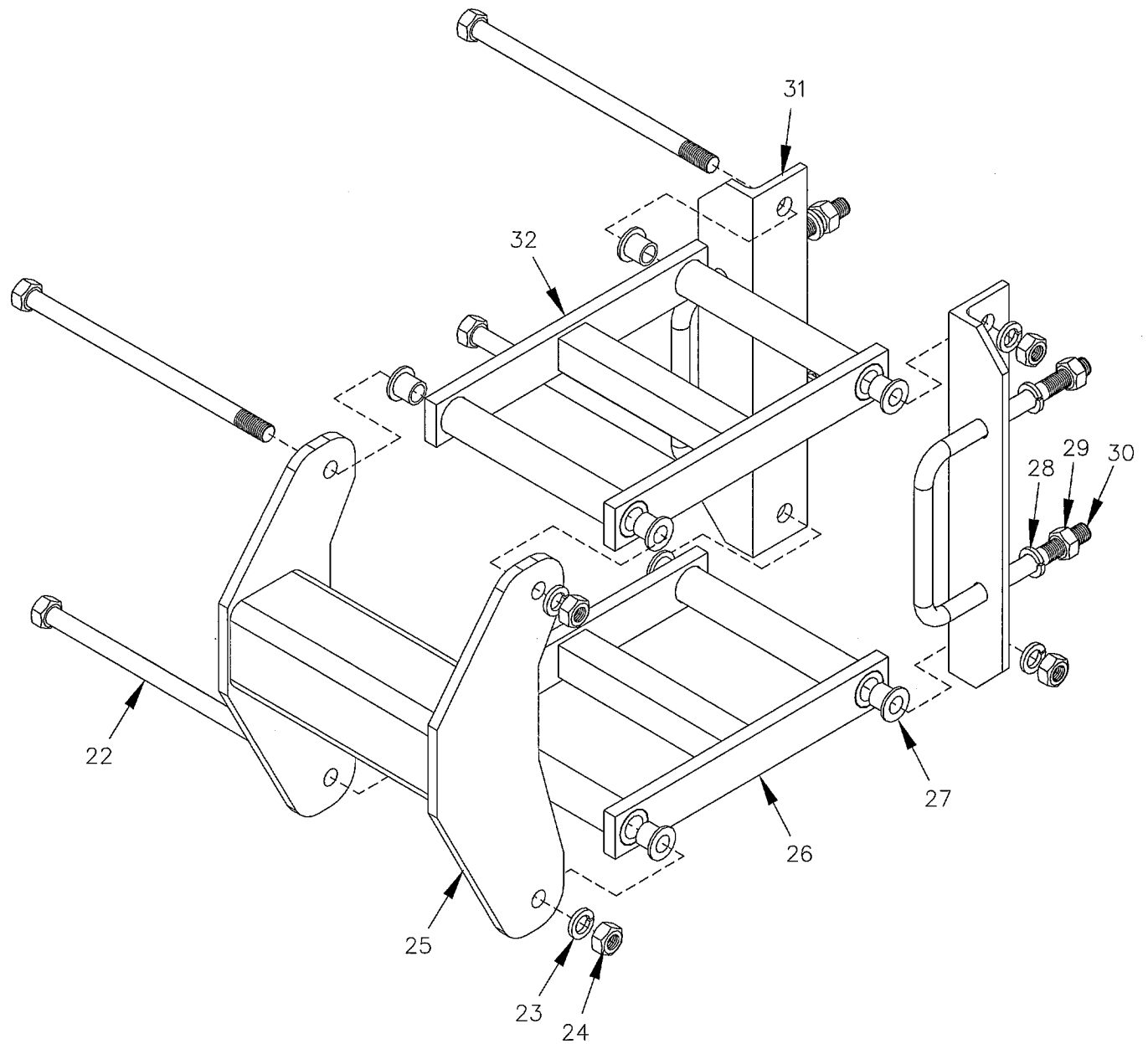
# RS2000 BEARING and HUB ASSEMBLY



Dwg. No. 11225

REF. NO.	PART NUMBER	DESCRIPTION	No. REQ'D	REF. NO.	PART NUMBER	DESCRIPTION	No. REQ'D
1	11102	DUST CAP	1	7	10614	BEARING OUTER CUP	1
2	11101	GASKET - DUST CAP	1	8	10611	HUB ONLY	1
3	90146	NUT - CASTLE 1"NC	1	9	10587	BEARING INNER CUP	1
4	90104	COTTER PIN 3/16 X 1-1/2	1	10	10584	BEARING INNER	1
5	90220	WASHER - FLAT 1"	1	11	10616	SEAL	1
6	10613	BEARING - OUTER	1				

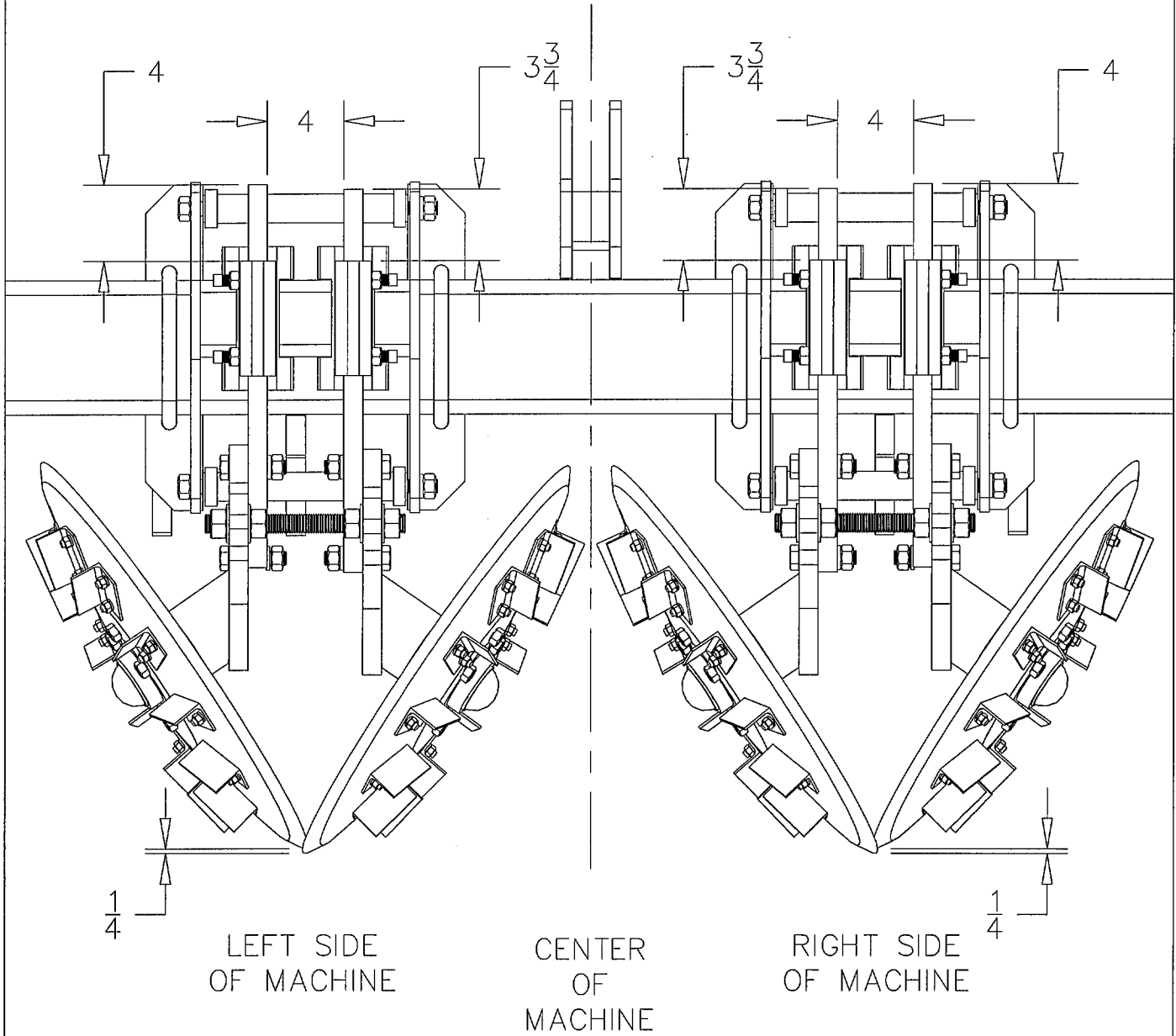
RS2000  
PARALLEL ROW UNIT with 4" X 4" CLAMP



Dwg. No. 11230

REF. NO.	PART NUMBER	DESCRIPTION	No. REQ'D	REF. NO.	PART NUMBER	DESCRIPTION	No. REQ'D
21	11040	PARALLEL LINKAGE ITEMS 22 THRU 32	--	27	11034	BUSHING	8
22	11047	BOLT 3/4" X 12-7/8"	4	28	90158	WASHER 3/4" LOCK	4
23	90158	WASHER 3/4" LOCK	4	29	90160	NUT 3/4"	4
24	90160	NUT 3/4"	4	30	90139	U-BOLT 3/4" X 7-1/8 X 8-5/8	2
25	11035	4" TOOL BAR WELDMENT	1	31	11025	ANGLE BRACKET	2
26	11026	PARALLEL LINKAGE WELDMENT	1	32	11026	PARALLEL LINKAGE WELDMENT	1

RS2000  
BLADE SETUP – PARALLEL LINKAGE ROW UNITS



LEFT SIDE  
OF MACHINE

BLADES ON LEFT  
SIDE OF MACHINE  
SHOULD ALL BE SET  
IN THIS MANOR

CENTER  
OF  
MACHINE

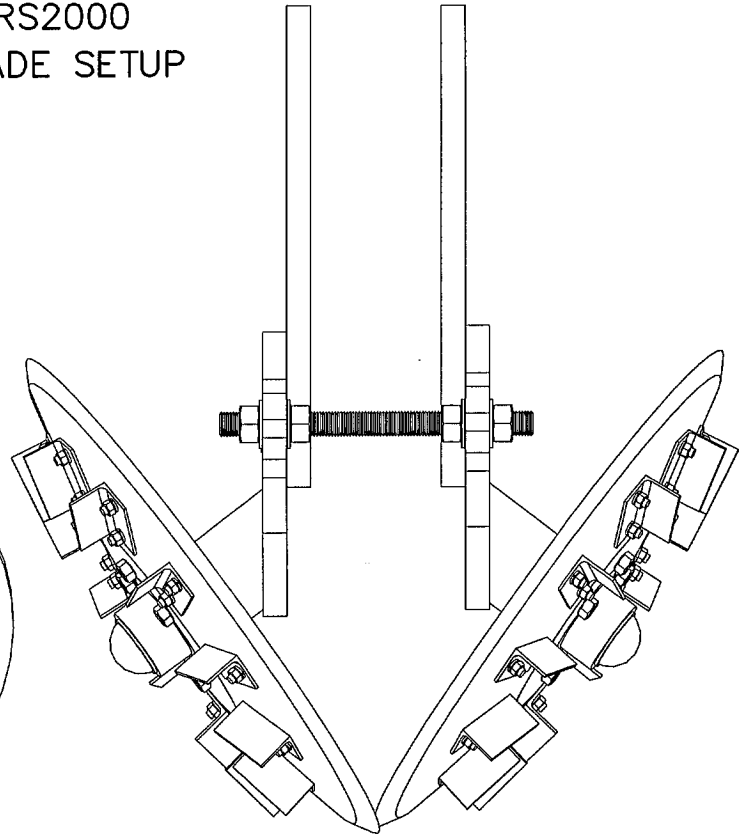
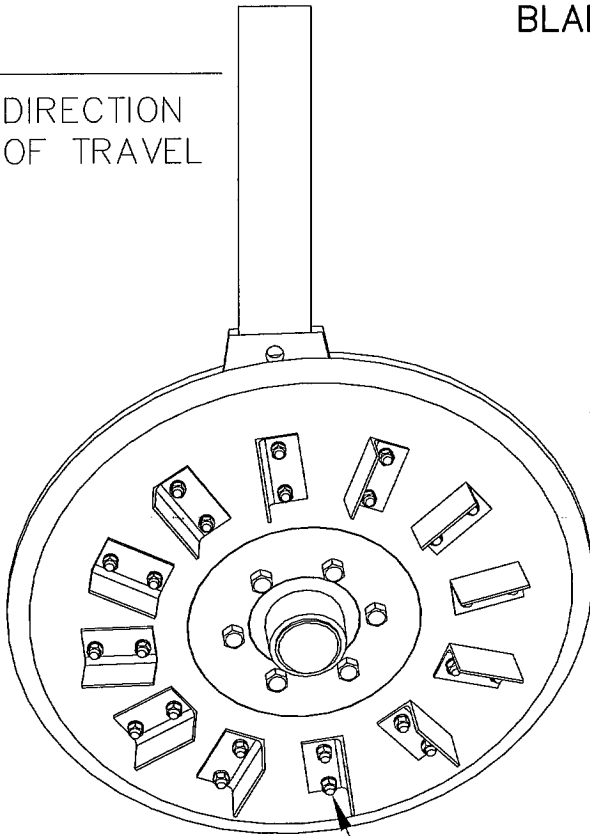
RIGHT SIDE  
OF MACHINE

BLADES ON RIGHT  
SIDE OF MACHINE  
SHOULD ALL BE SET  
IN THIS MANOR

VIEW FROM  
REAR OF MACHINE

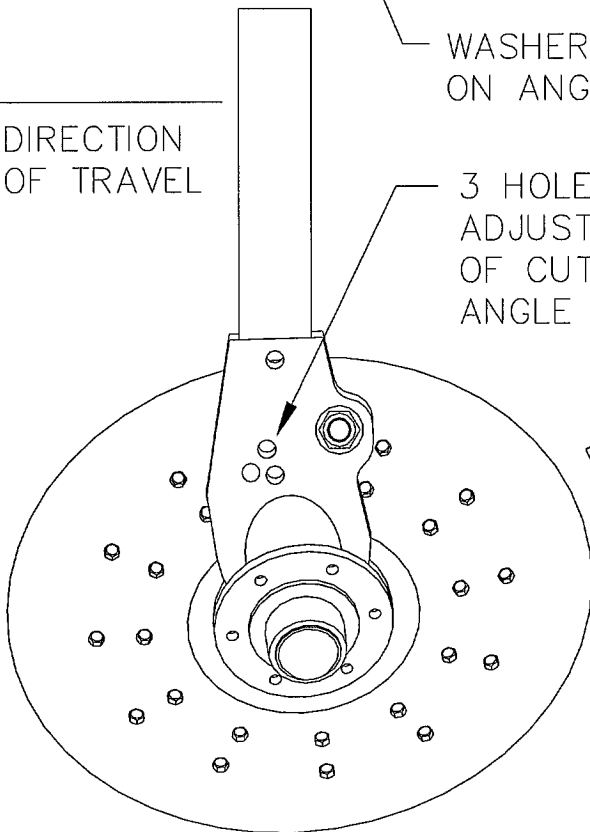
# RS2000 BLADE SETUP

←  
DIRECTION  
OF TRAVEL



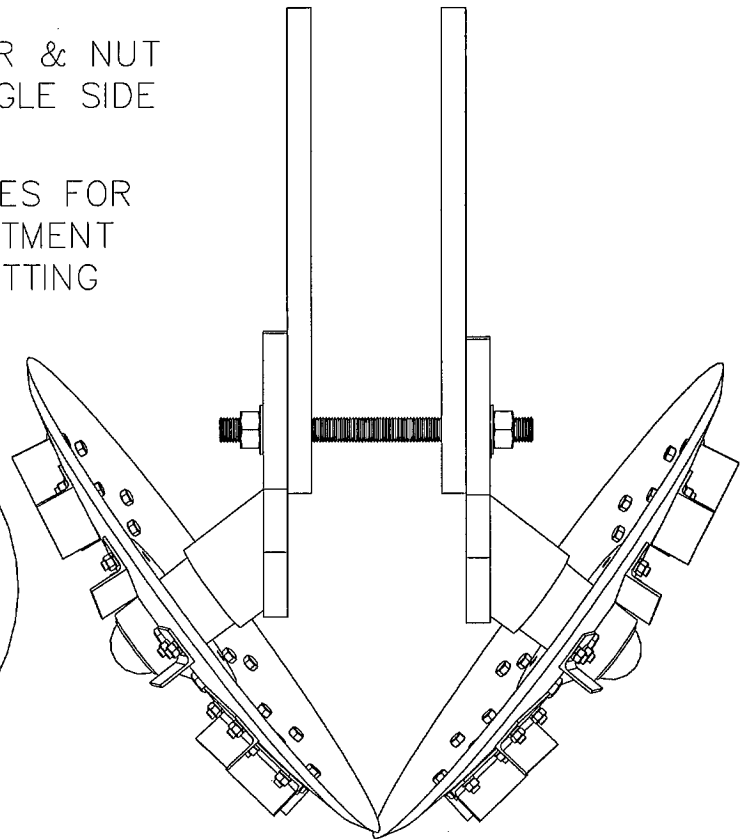
REAR VIEW

←  
DIRECTION  
OF TRAVEL



WASHER & NUT  
ON ANGLE SIDE

3 HOLES FOR  
ADJUSTMENT  
OF CUTTING  
ANGLE

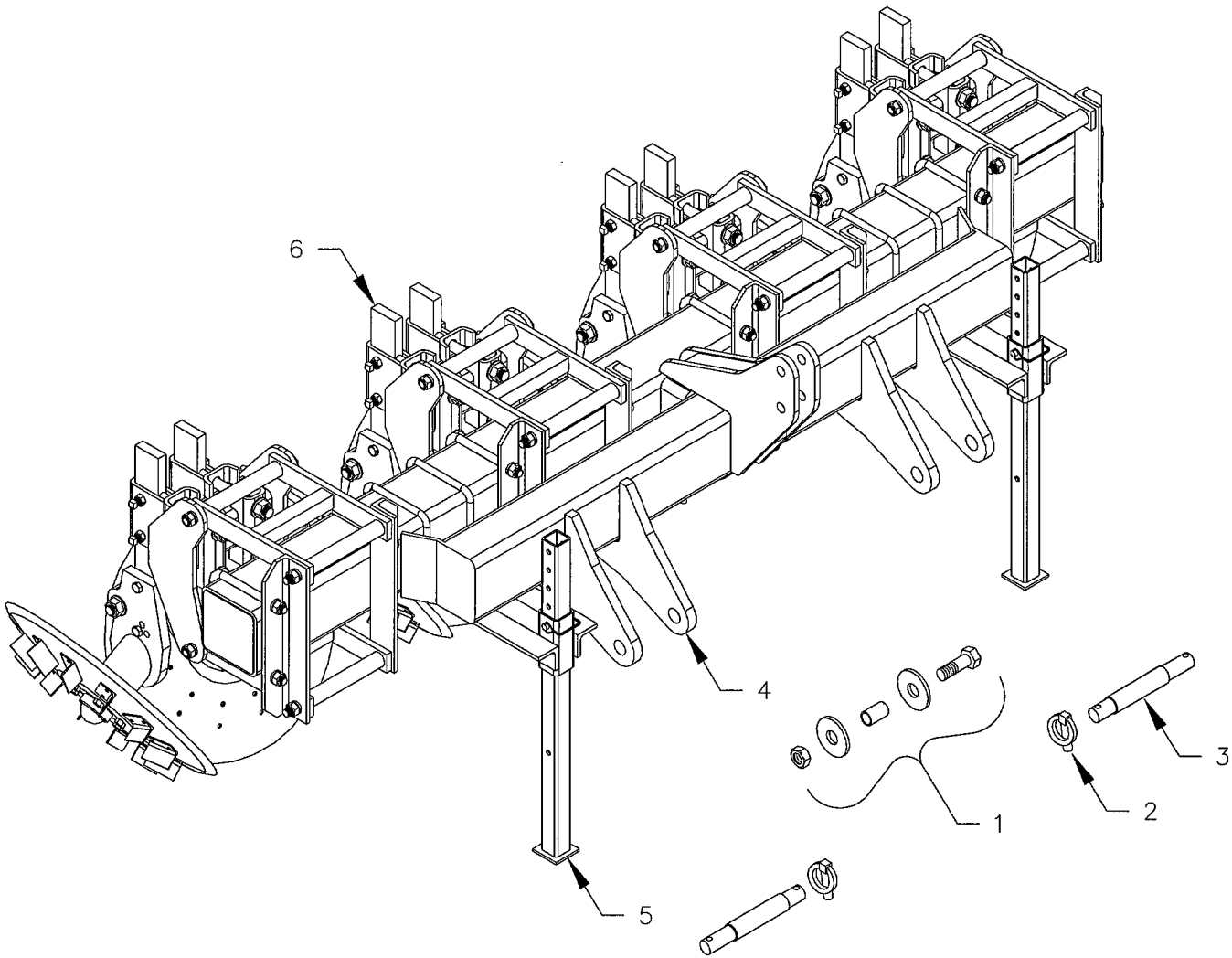


LEFT BLADE REMOVED

FRONT VIEW



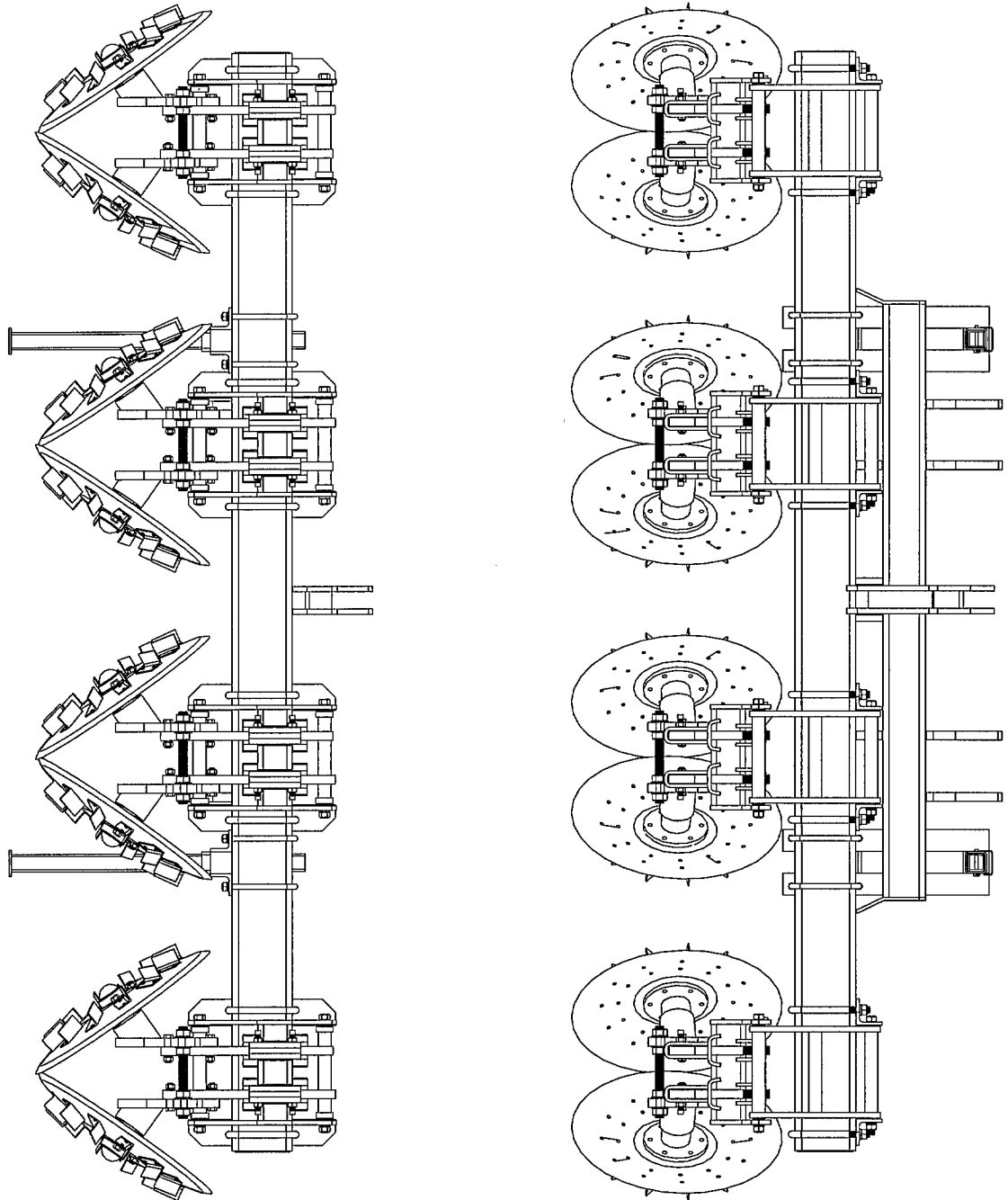
# 20430RP



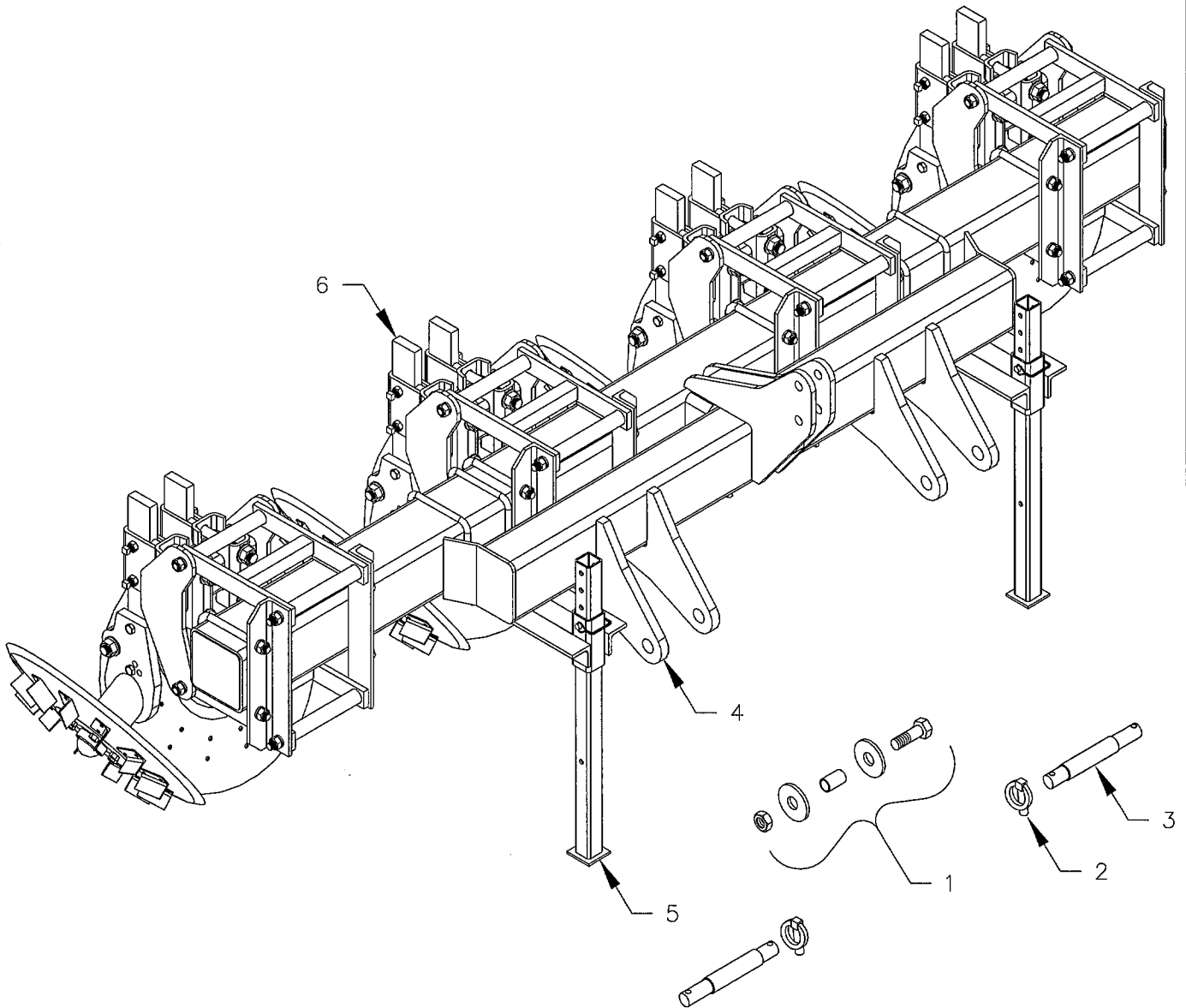
Dwg. No. 11213

REF. NO.	PART NUMBER	DESCRIPTION	No. REQ'D	REF. NO.	PART NUMBER	DESCRIPTION	No. REQ'D
1	90110	BOLT 1"NC x 4-3/8"	1	3	90113	HITCH PIN CAT. 2 & 3	2
	90109	TOP LINK BUSHING	1	4	11057	TOOL BAR	1
	90128	WASHER 1" FLAT	2	5	10384	STAND COMPLETE	2
	90111	NUT 1"NC DEFORMED	1	6	11039	PARALLEL LINKAGE ROW UNIT COMPLETE	4
2	90115	LYNCH PIN 7/16 x 1-1/2	2				

20436RP



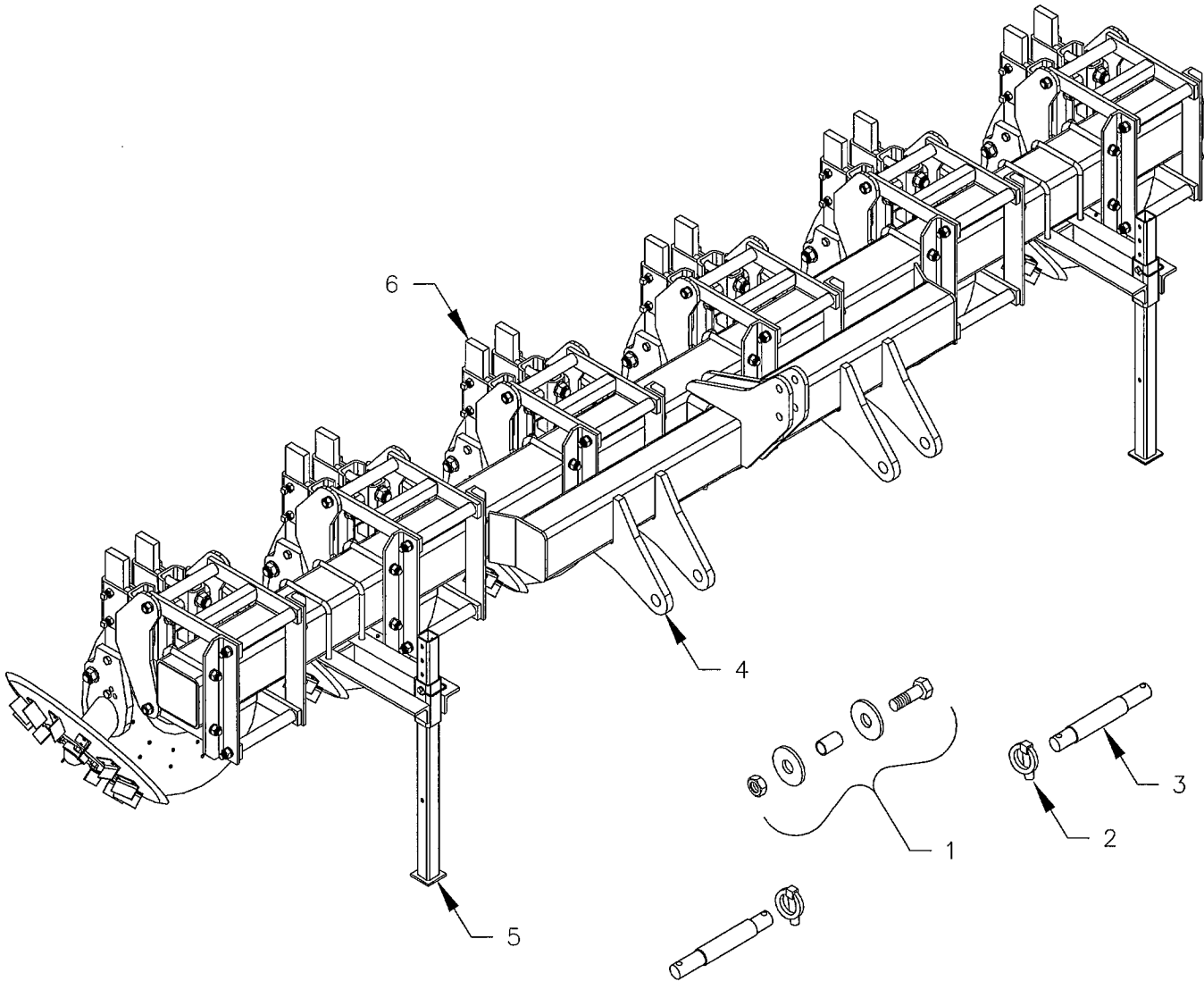
# 20436RP



Dwg. No. 11214

REF. NO.	PART NUMBER	DESCRIPTION	No. REQ'D	REF. NO.	PART NUMBER	DESCRIPTION	No. REQ'D
1	90110	BOLT 1"NC x 4-3/8"	1	3	90113	HITCH PIN CAT. 2 & 3	2
	90109	TOP LINK BUSHING	1	4	11062	TOOL BAR	1
	90128	WASHER 1" FLAT	2	5	10384	STAND COMPLETE	2
	90111	NUT 1"NC DEFORMED	1	6	11039	PARALLEL LINKAGE ROW UNIT COMPLETE	4
2	90115	LYNCH PIN 7/16 x 1-1/2	2				

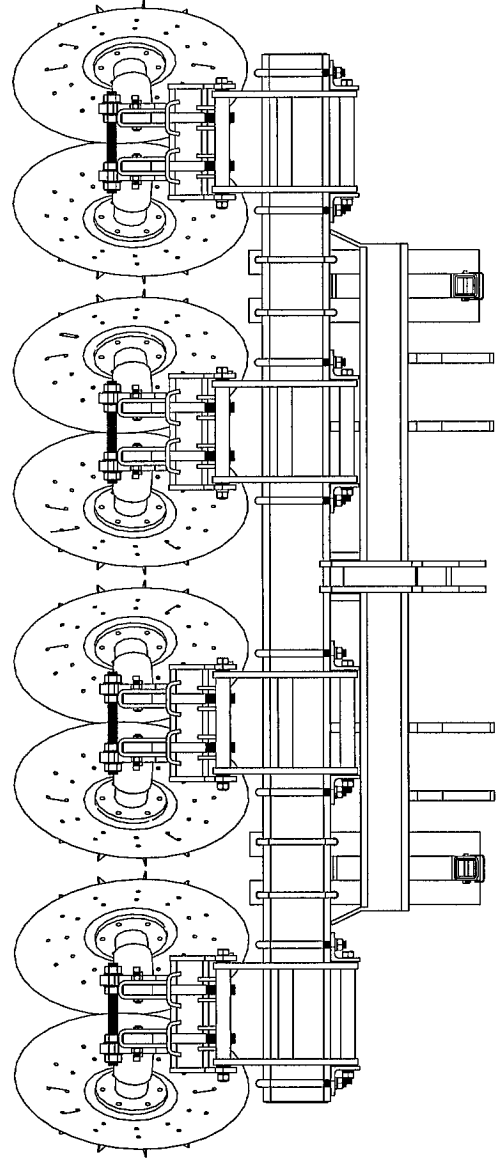
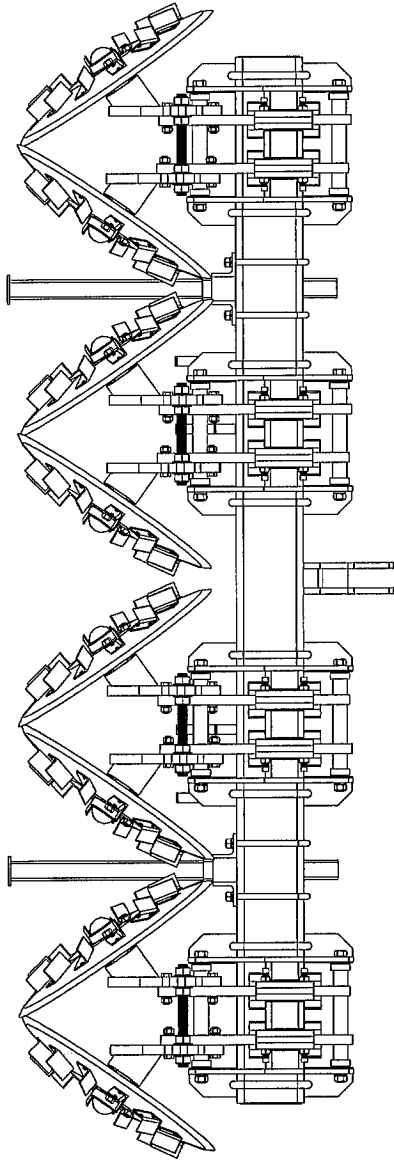
# 20630RP



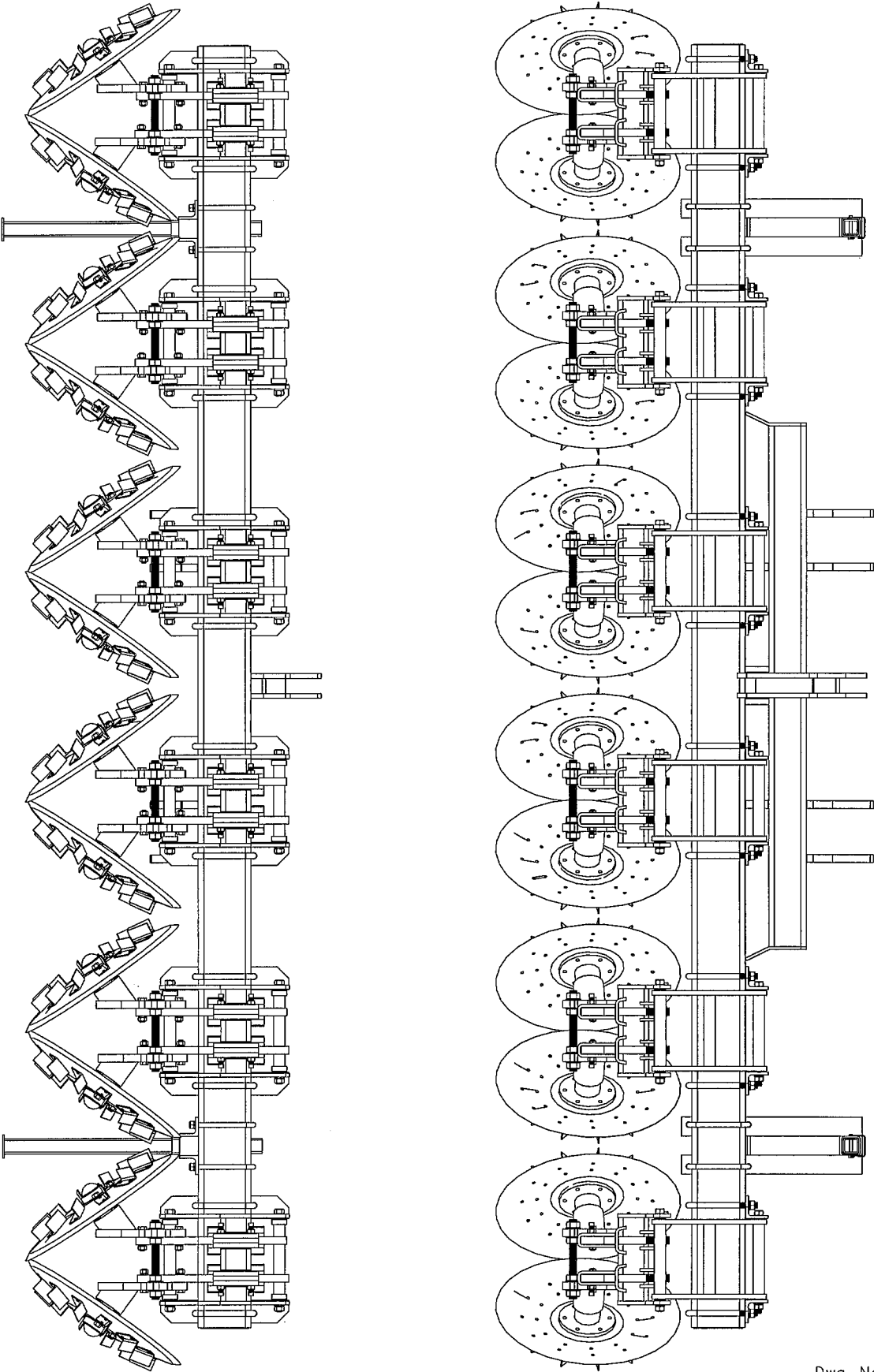
Dwg. No. 11215

REF. NO.	PART NUMBER	DESCRIPTION	No. REQ'D	REF. NO.	PART NUMBER	DESCRIPTION	No. REQ'D
1	90110	BOLT 1"NC x 4-3/8"	1	3	90113	HITCH PIN CAT. 2 & 3	2
	90109	TOP LINK BUSHING	1	4	11058	TOOL BAR	1
	90128	WASHER 1" FLAT	2	5	10384	STAND COMPLETE	2
	90111	NUT 1"NC DEFORMED	1	6	11039	PARALLEL LINKAGE ROW UNIT COMPLETE	6
2	90115	LYNCH PIN 7/16 x 1-1/2	2				

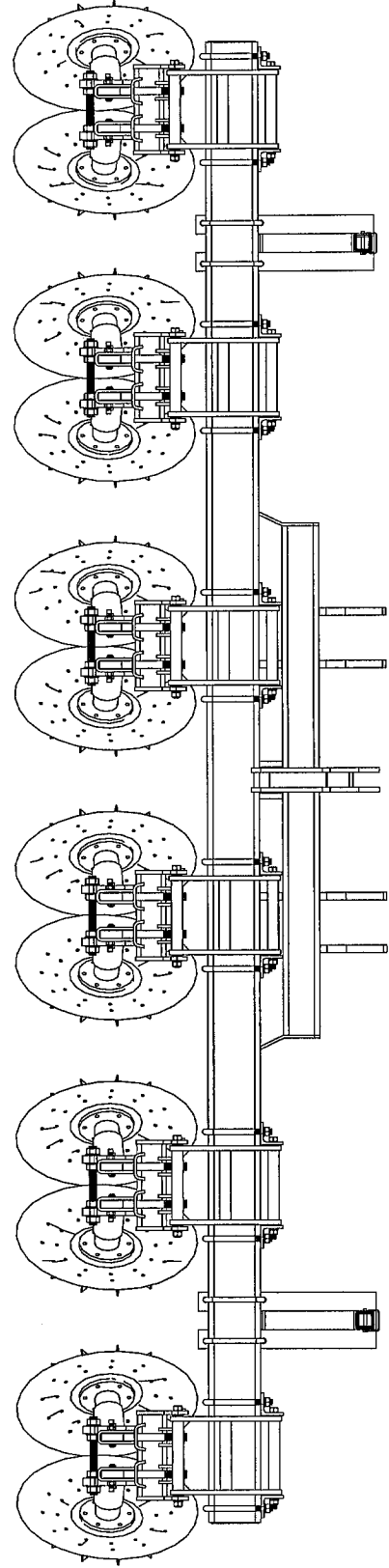
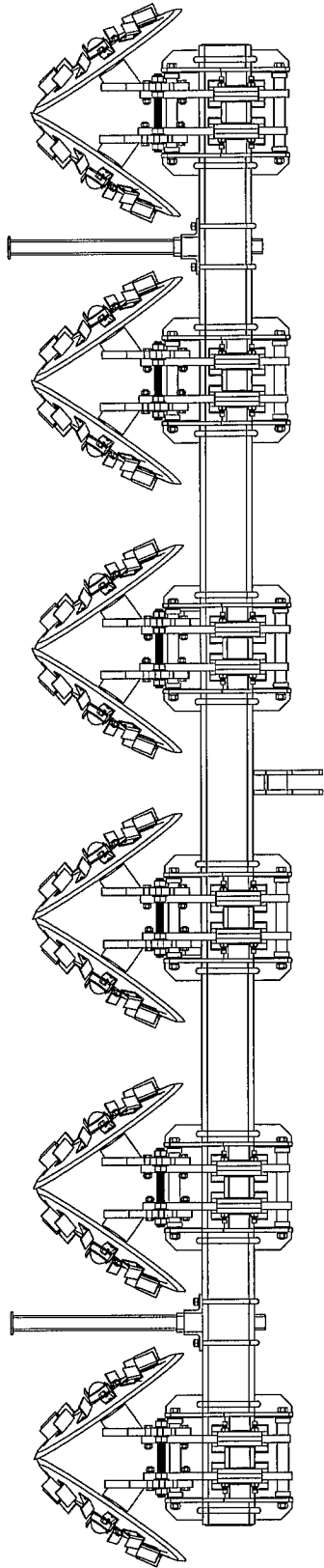
20430RP



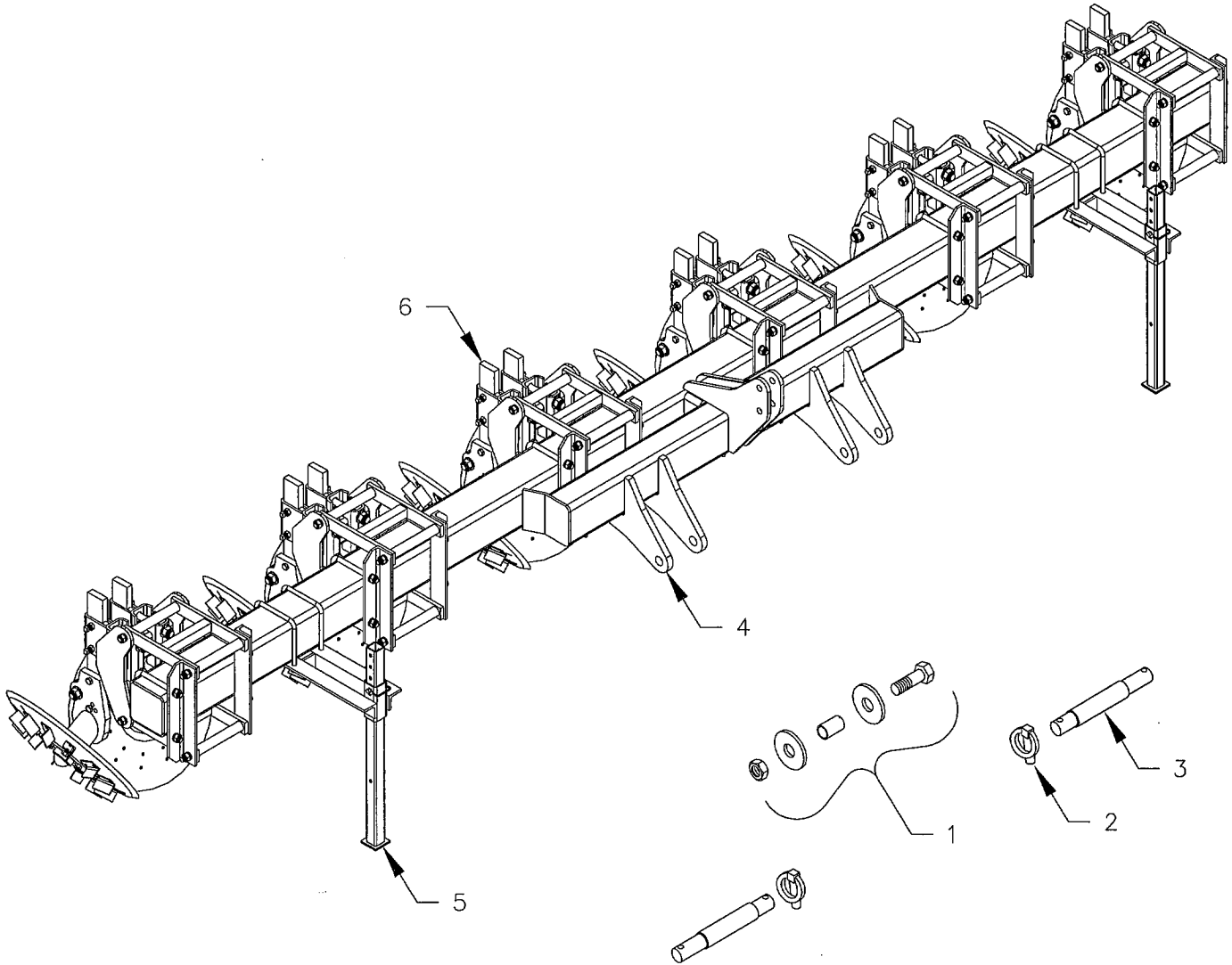
20630RP



20636RP



# 20640RP

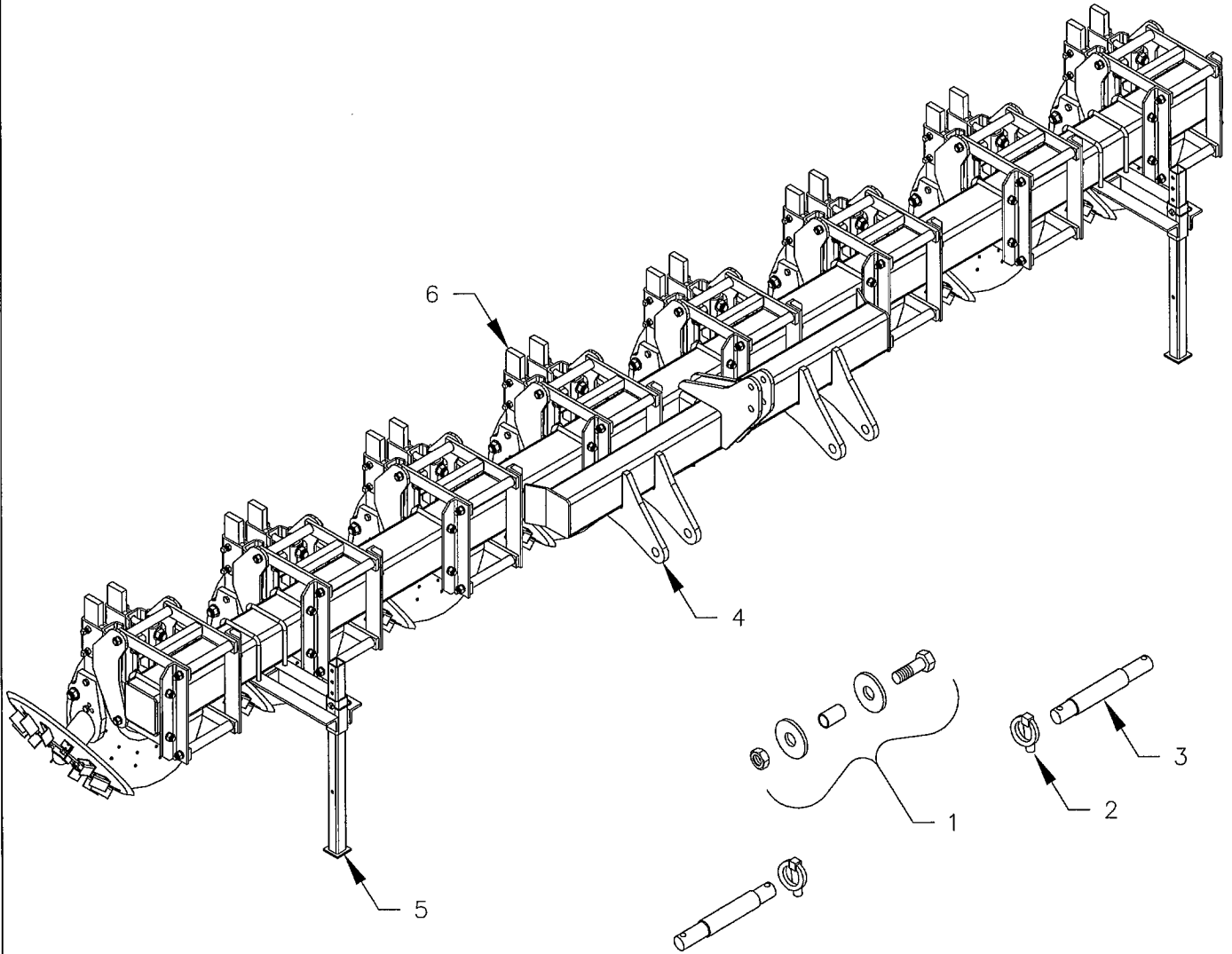


Dwg. No. 11217

REF. NO.	PART NUMBER	DESCRIPTION	No. REQ'D	REF. NO.	PART NUMBER	DESCRIPTION	No. REQ'D
1	90110	BOLT 1"NC x 4-3/8"	1	3	90113	HITCH PIN CAT. 2 & 3	2
	90109	TOP LINK BUSHING	1	4	11066	TOOL BAR	1
	90128	WASHER 1" FLAT	2	5	10384	STAND COMPLETE	2
	90111	NUT 1"NC DEFORMED	1	6	11039	PARALLEL LINKAGE ROW UNIT COMPLETE	6
2	90115	LYNCH PIN 7/16 x 1-1/2	2				



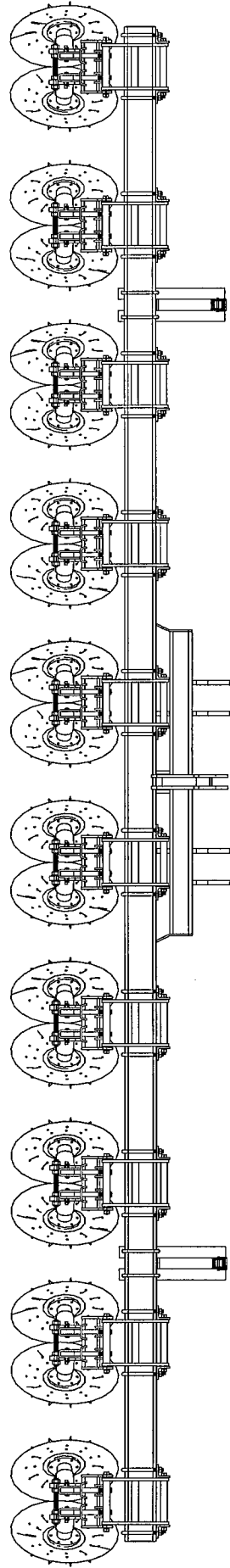
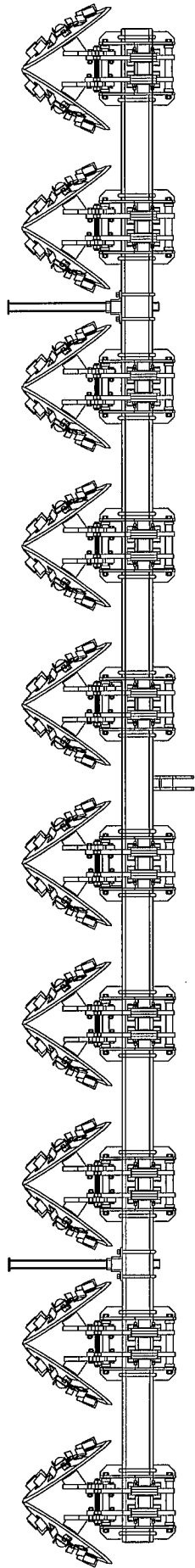
# 20830RP



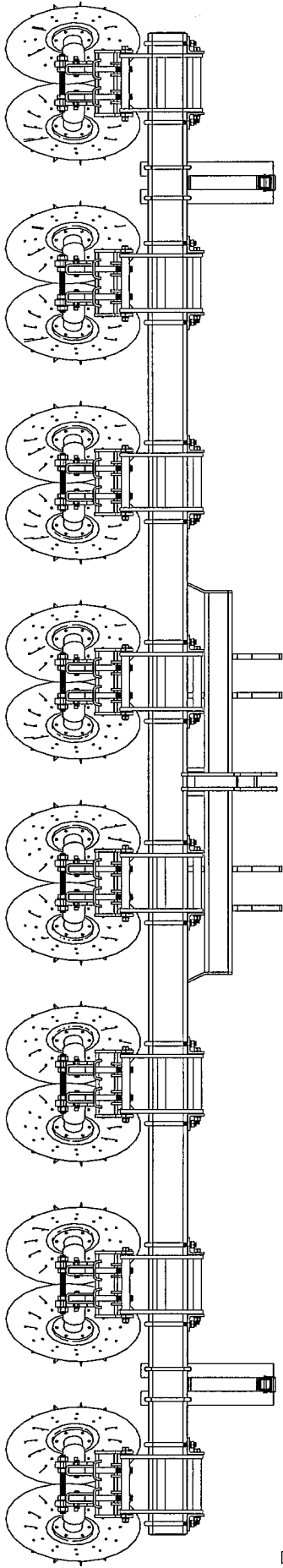
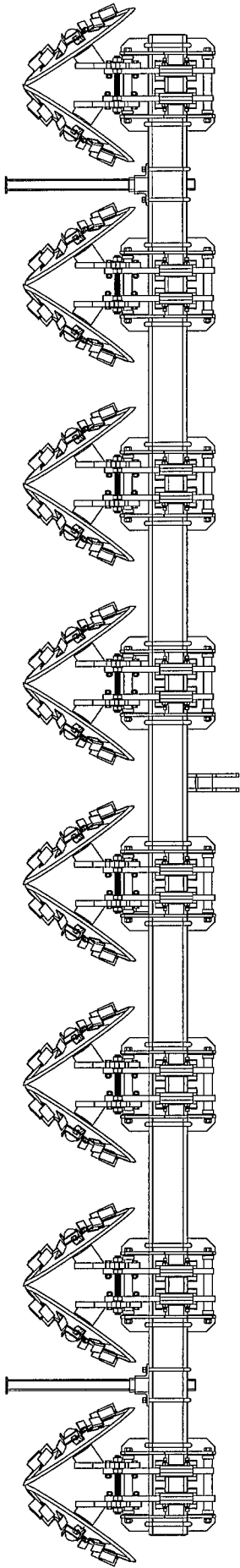
Dwg. No. 11218

REF. NO.	PART NUMBER	DESCRIPTION	No. REQ'D	REF. NO.	PART NUMBER	DESCRIPTION	No. REQ'D
1	90110	BOLT 1"NC x 4-3/8"	1	3	90113	HITCH PIN CAT. 2 & 3	2
	90109	TOP LINK BUSHING	1	4	11059	TOOL BAR	1
	90128	WASHER 1" FLAT	2	5	10384	STAND COMPLETE	2
	90111	NUT 1"NC DEFORMED	1	6	11039	PARALLEL LINKAGE ROW UNIT COMPLETE	8
2	90115	LYNCH PIN 7/16 x 1-1/2	2				

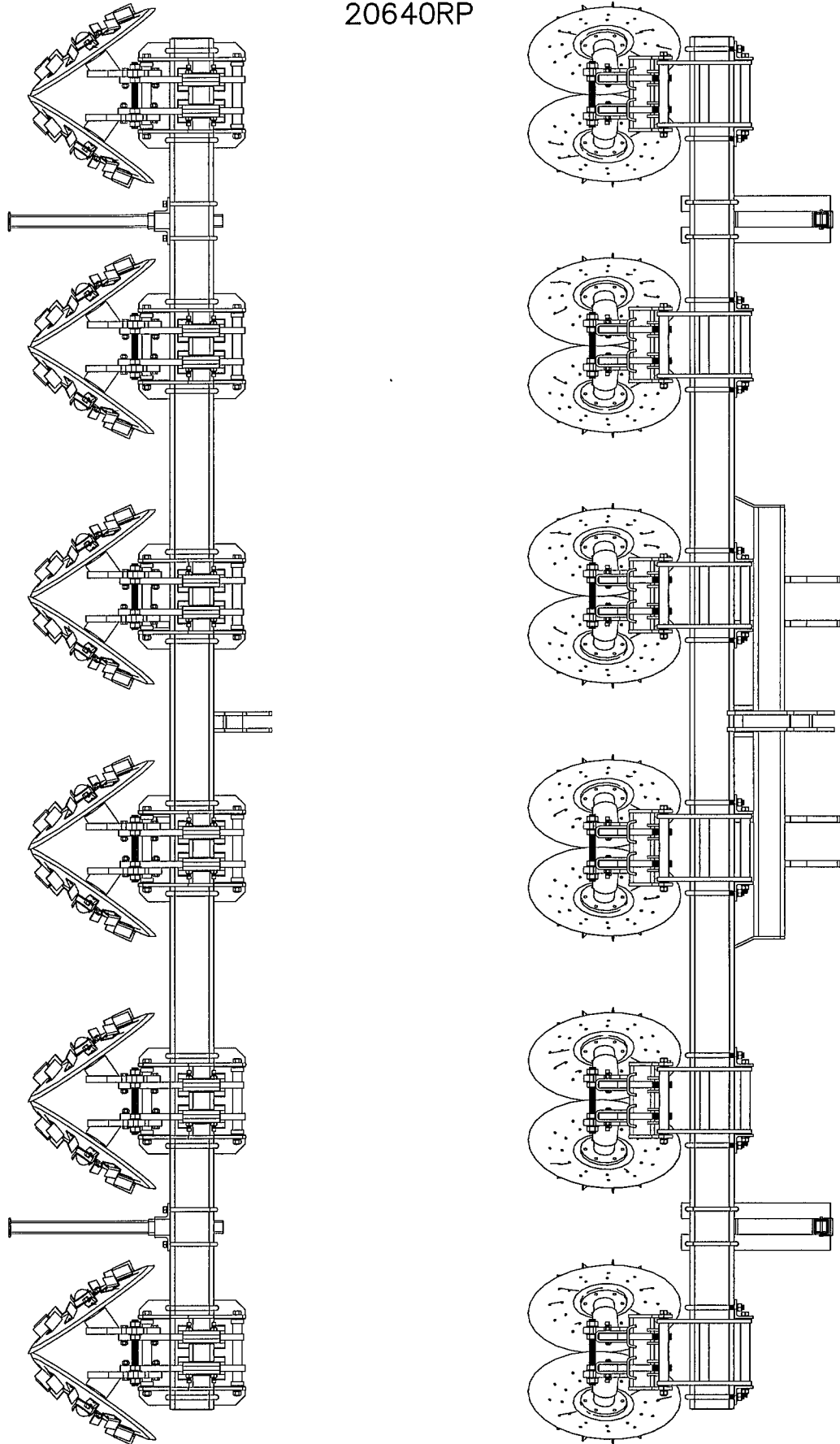
21036RP



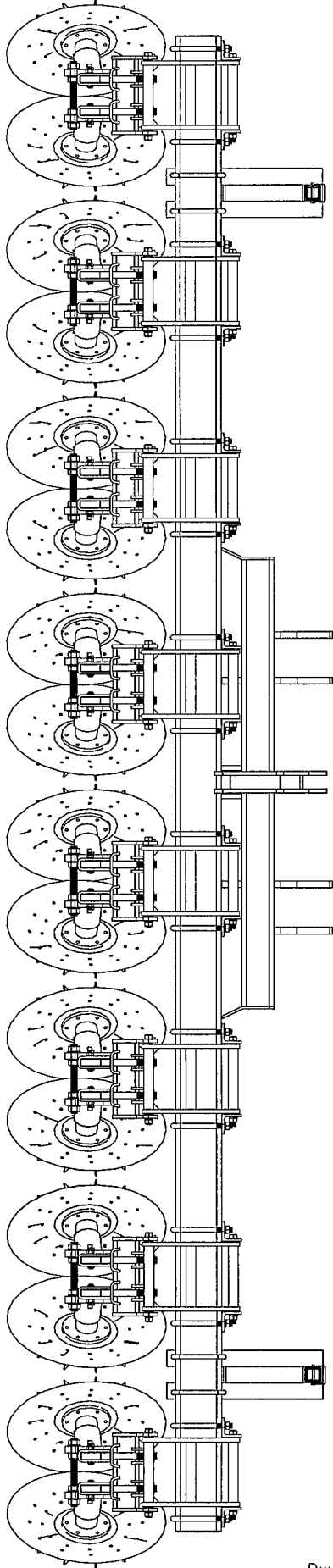
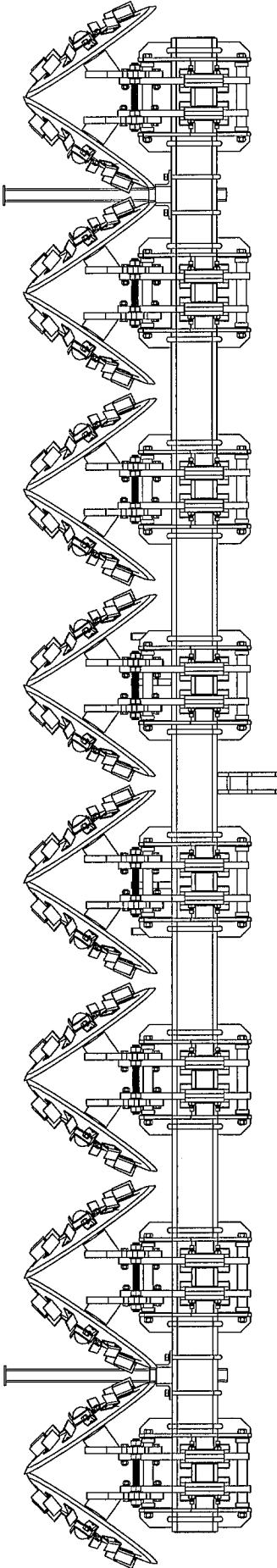
20836RP



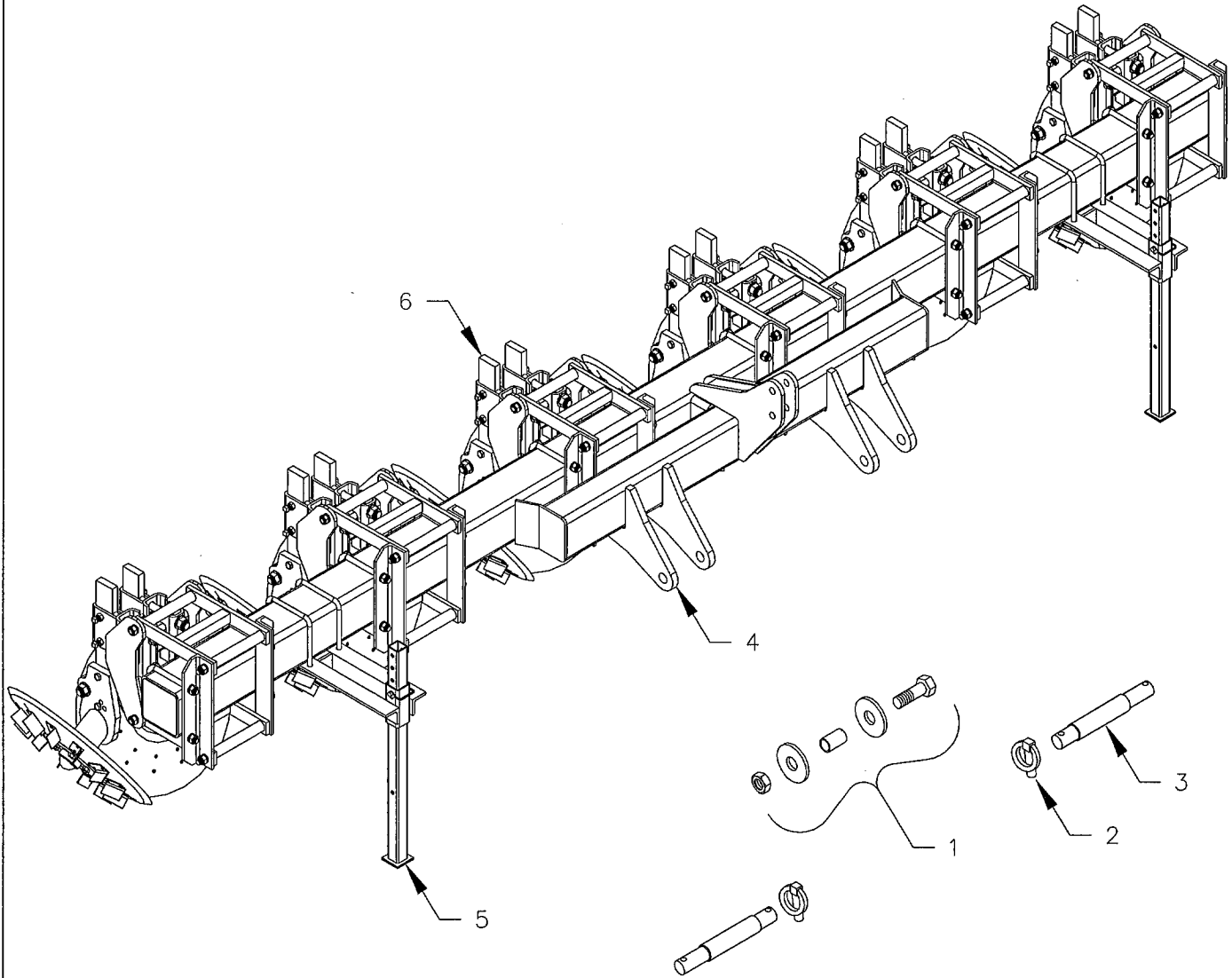
20640RP



20830RP



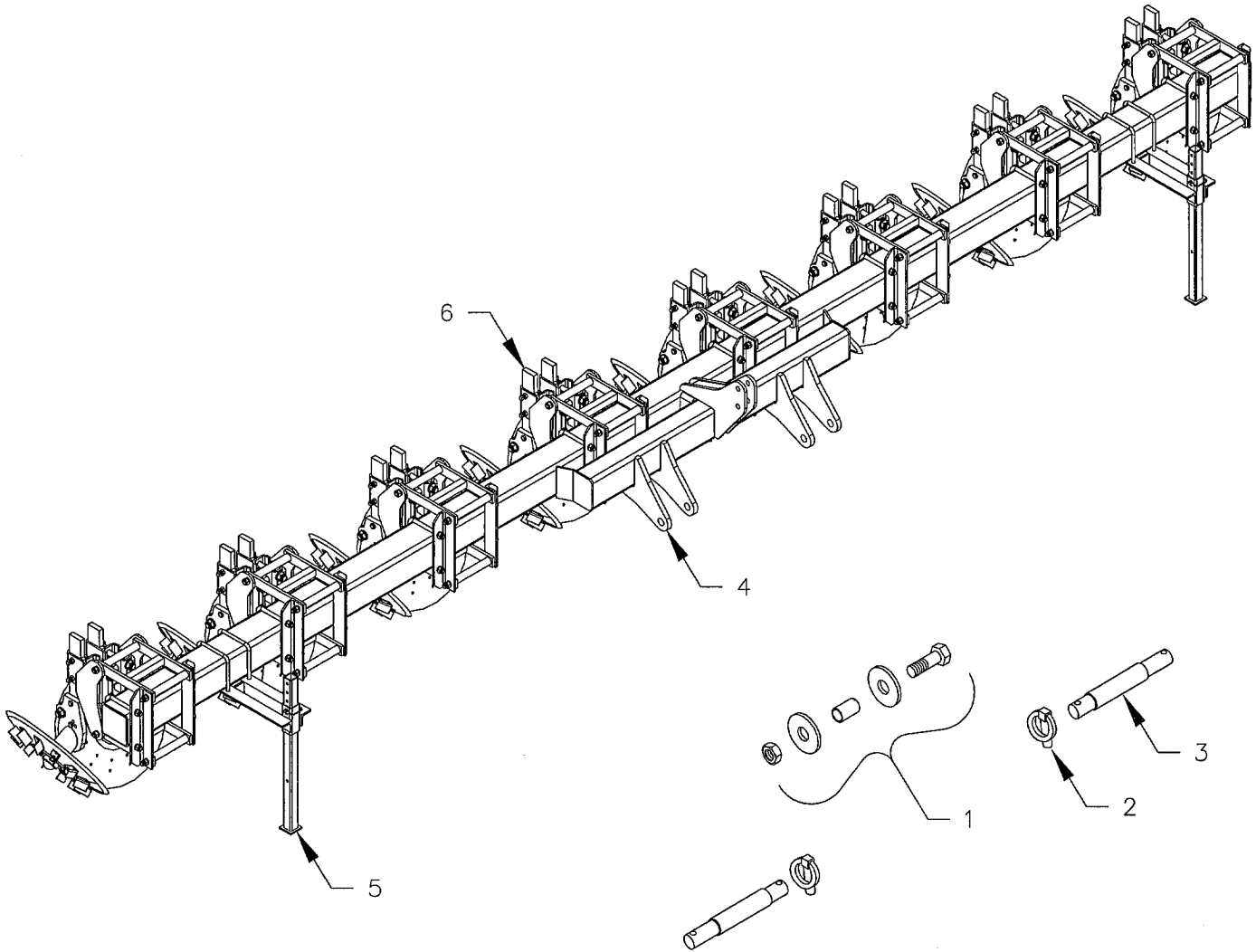
20636RP



Dwg. No. 11216

REF. NO.	PART NUMBER	DESCRIPTION	No. REQ'D	REF. NO.	PART NUMBER	DESCRIPTION	No. REQ'D
1	90110	BOLT 1"NC x 4-3/8"	1	3	90113	HITCH PIN CAT. 2 & 3	2
	90109	TOP LINK BUSHING	1	4	11063	TOOL BAR	1
	90128	WASHER 1" FLAT	2	5	10384	STAND COMPLETE	2
	90111	NUT 1"NC DEFORMED	1	6	11039	PARALLEL LINKAGE ROW UNIT COMPLETE	6
2	90115	LYNCH PIN 7/16 x 1-1/2	2				

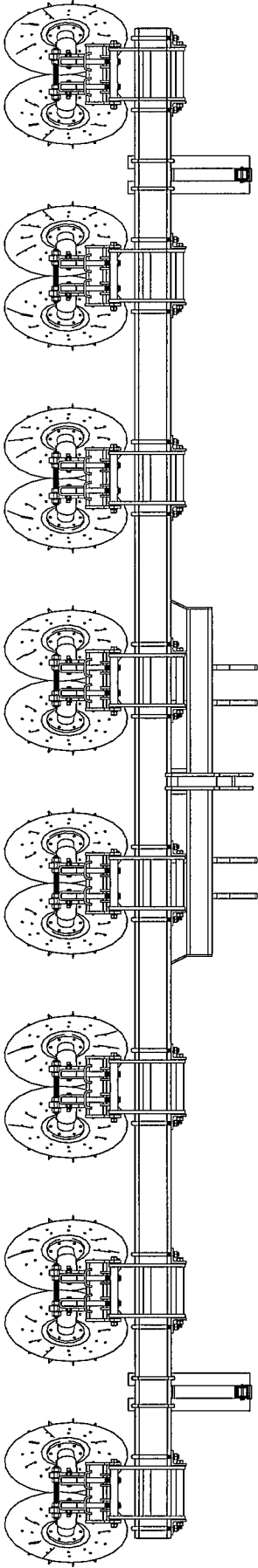
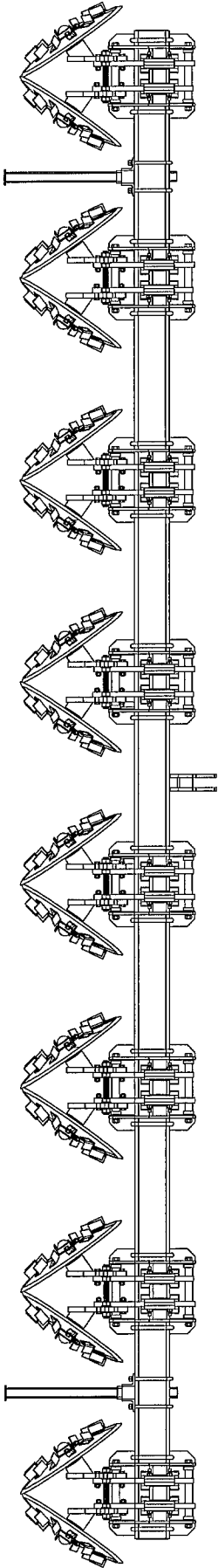
20840RP



Dwg. No. 11220

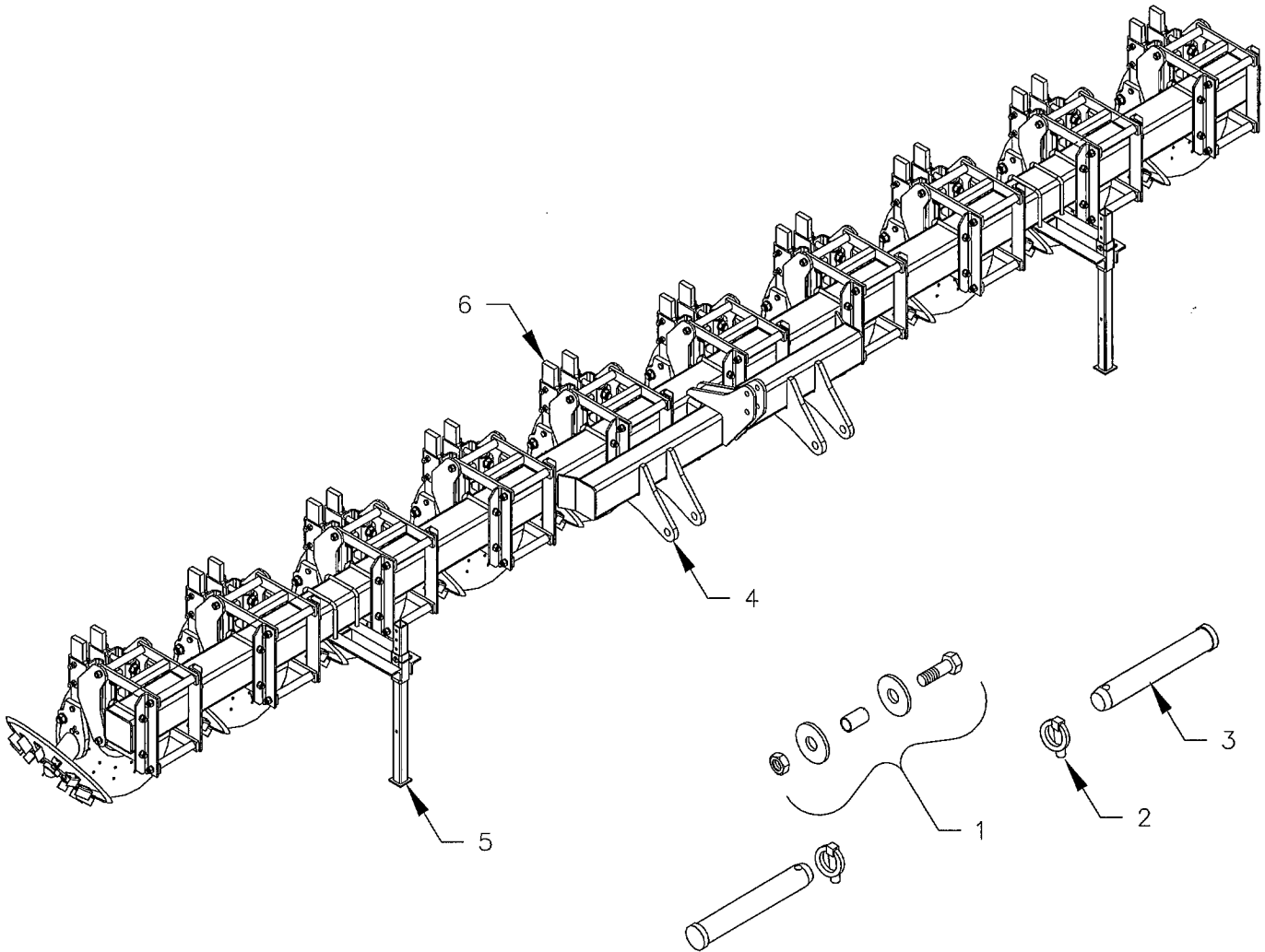
REF. NO.	PART NUMBER	DESCRIPTION	No. REQ'D	REF. NO.	PART NUMBER	DESCRIPTION	No. REQ'D
1	90110	BOLT 1"NC x 4-3/8"	1	3	90113	HITCH PIN CAT. 2 & 3	2
	90109	TOP LINK BUSHING	1	4	11067	TOOL BAR	1
	90128	WASHER 1" FLAT	2	5	10384	STAND COMPLETE	2
	90111	NUT 1"NC DEFORMED	1	6	11039	PARALLEL LINKAGE ROW UNIT COMPLETE	8
	90115	LYNCH PIN 7/16 x 1-1/2	2				

20840RP





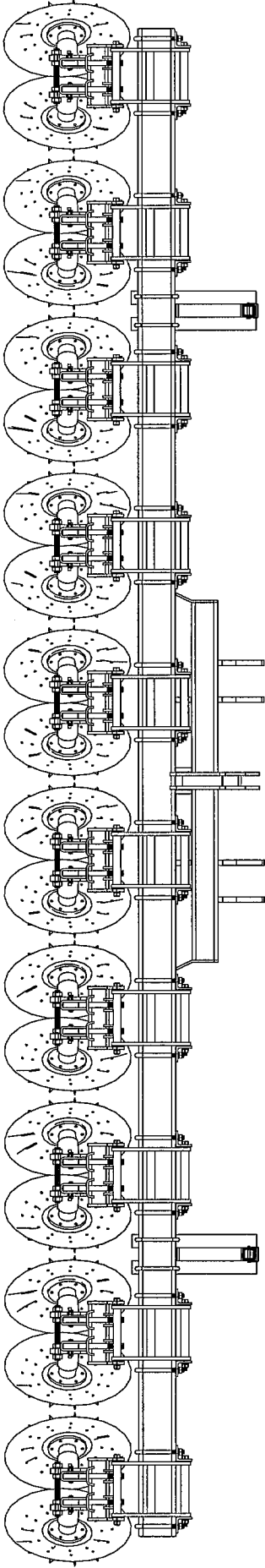
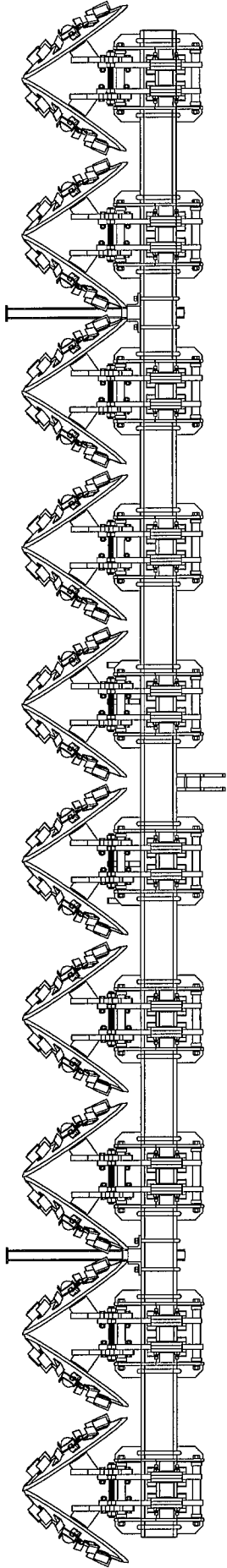
# 21030RP



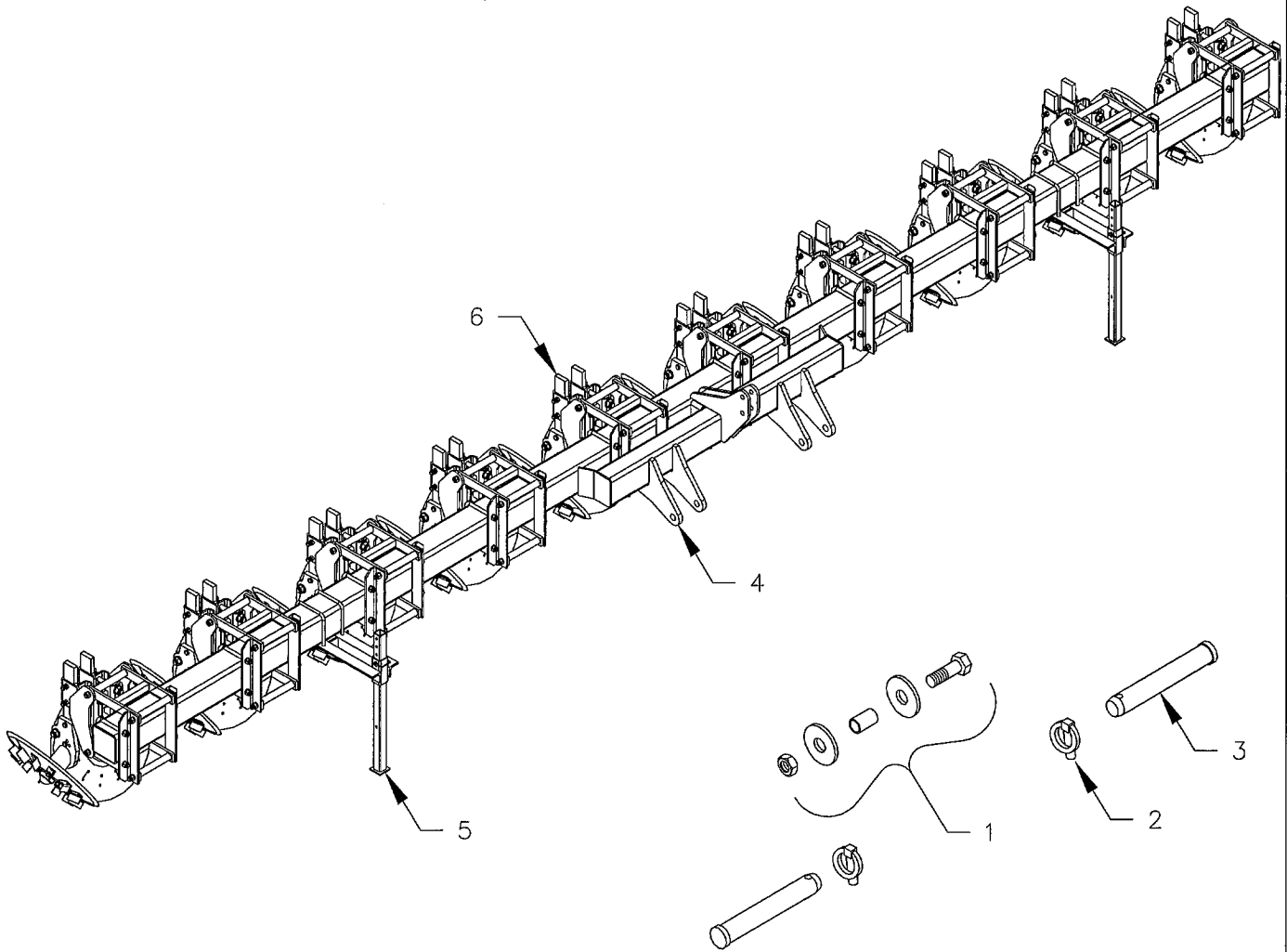
Dwg. No. 11221

REF. NO.	PART NUMBER	DESCRIPTION	No. REQ'D	REF. NO.	PART NUMBER	DESCRIPTION	No. REQ'D	
1	90110	BOLT 1"NC x 4-3/8"	1	3	90114	HITCH PIN CAT. 3	2	
	90109	TOP LINK BUSHING	1		4	11060	TOOL BAR	1
	90128	WASHER 1" FLAT	2		5	10384	STAND COMPLETE	2
	90111	NUT 1"NC DEFORMED	1		6	11039	PARALLEL LINKAGE ROW UNIT COMPLETE	10
2	90115	LYNCH PIN 7/16 x 1-1/2	2					

21030RP



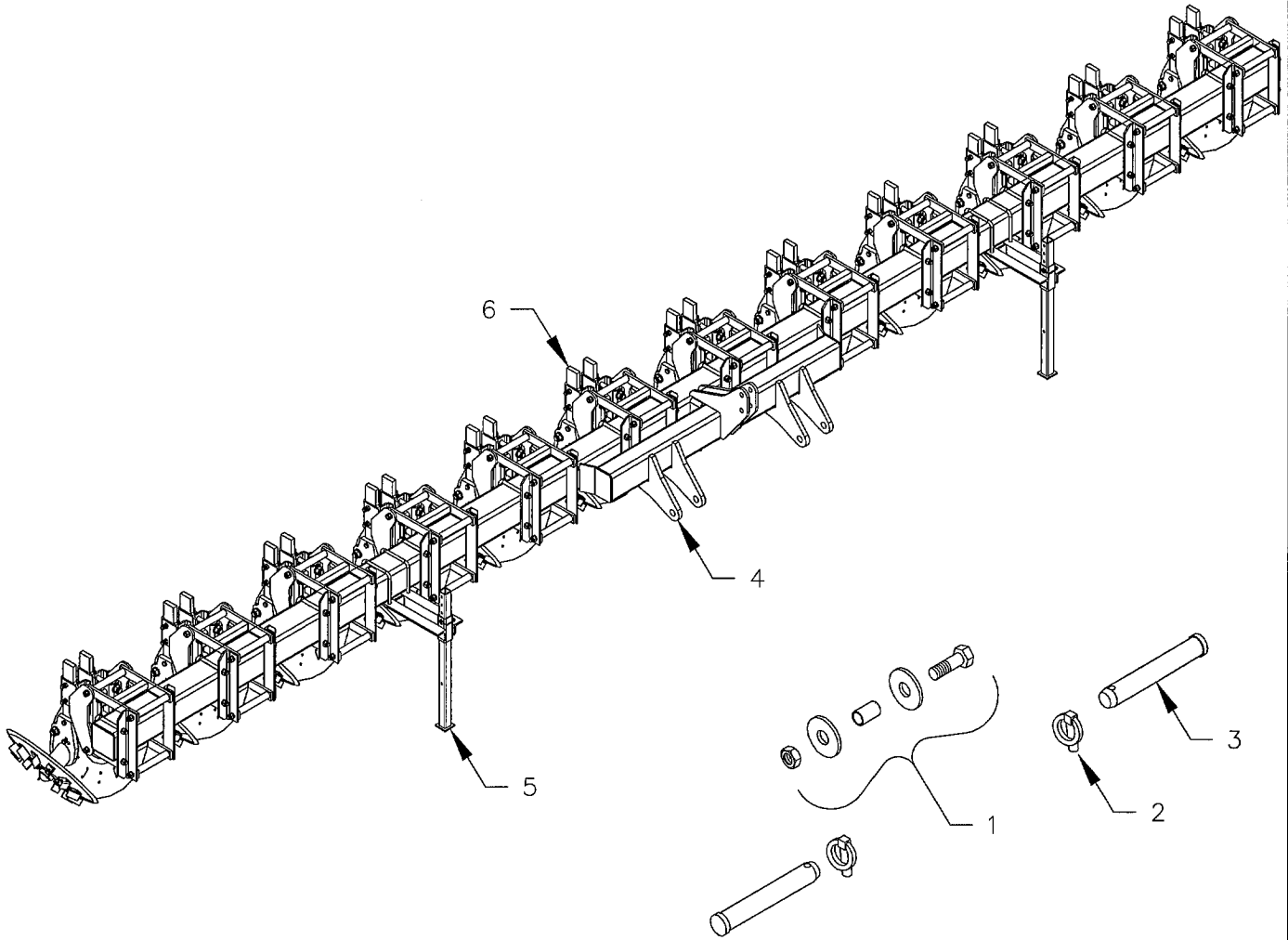
# 21036RP



Dwg. No. 11222

REF. NO.	PART NUMBER	DESCRIPTION	No. REQ'D	REF. NO.	PART NUMBER	DESCRIPTION	No. REQ'D
1	90110	BOLT 1"NC x 4-3/8"	1	3	90114	HITCH PIN CAT. 3	2
	90109	TOP LINK BUSHING	1	4	11065	TOOL BAR	1
	90128	WASHER 1" FLAT	2	5	10384	STAND COMPLETE	2
	90111	NUT 1"NC DEFORMED	1	6	11039	PARALLEL LINKAGE ROW UNIT COMPLETE	10
2	90115	LYNCH PIN 7/16 x 1-1/2	2				

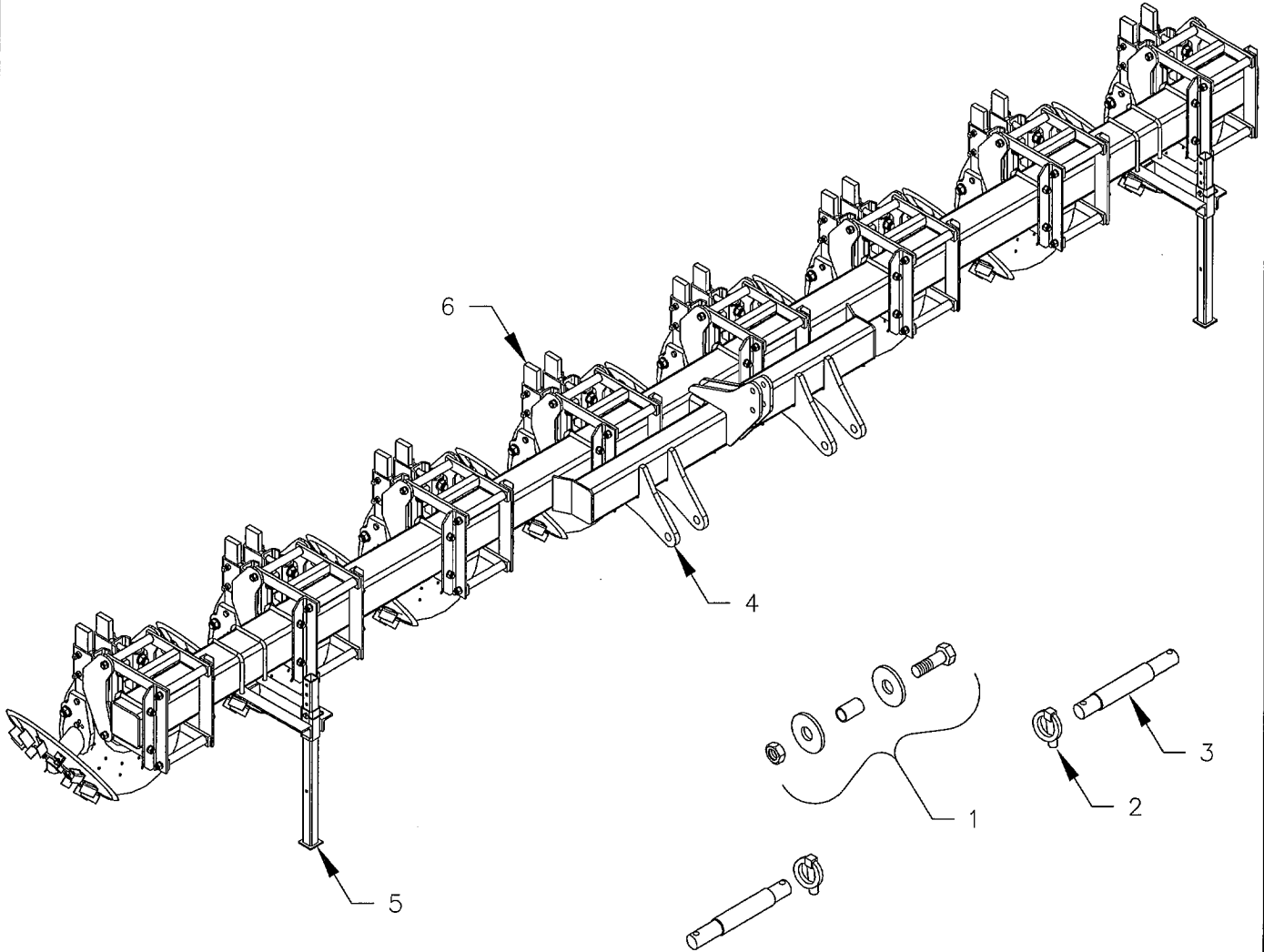
# 21230RP



Dwg. No. 11223

REF. NO.	PART NUMBER	DESCRIPTION	No. REQ'D	REF. NO.	PART NUMBER	DESCRIPTION	No. REQ'D
1	90110	BOLT 1"NC x 4-3/8"	1	3	90114	HITCH PIN CAT. 3	2
	90109	TOP LINK BUSHING	1	4	11061	TOOL BAR	1
	90128	WASHER 1" FLAT	2	5	10384	STAND COMPLETE	2
	90111	NUT 1"NC DEFORMED	1	6	11039	PARALLEL LINKAGE ROW UNIT COMPLETE	12
	90115	LYNCH PIN 7/16 x 1-1/2	2				

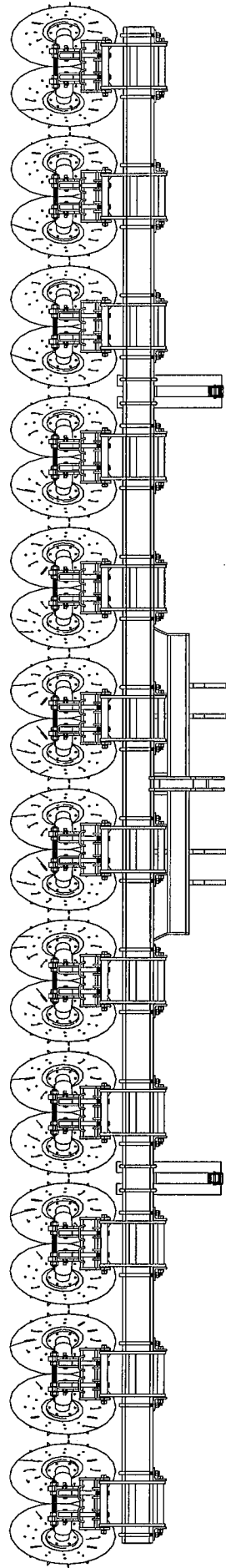
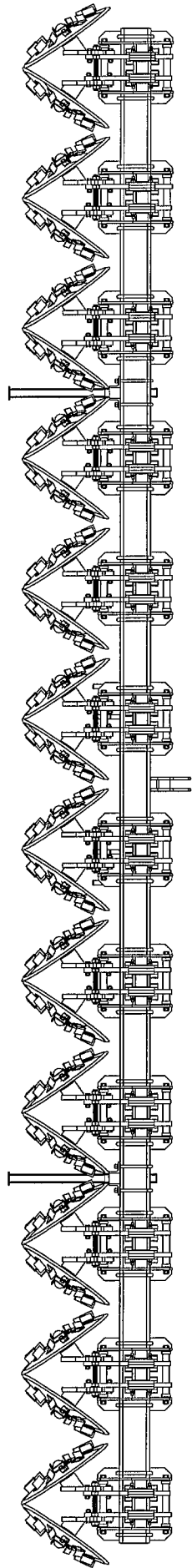
20836RP



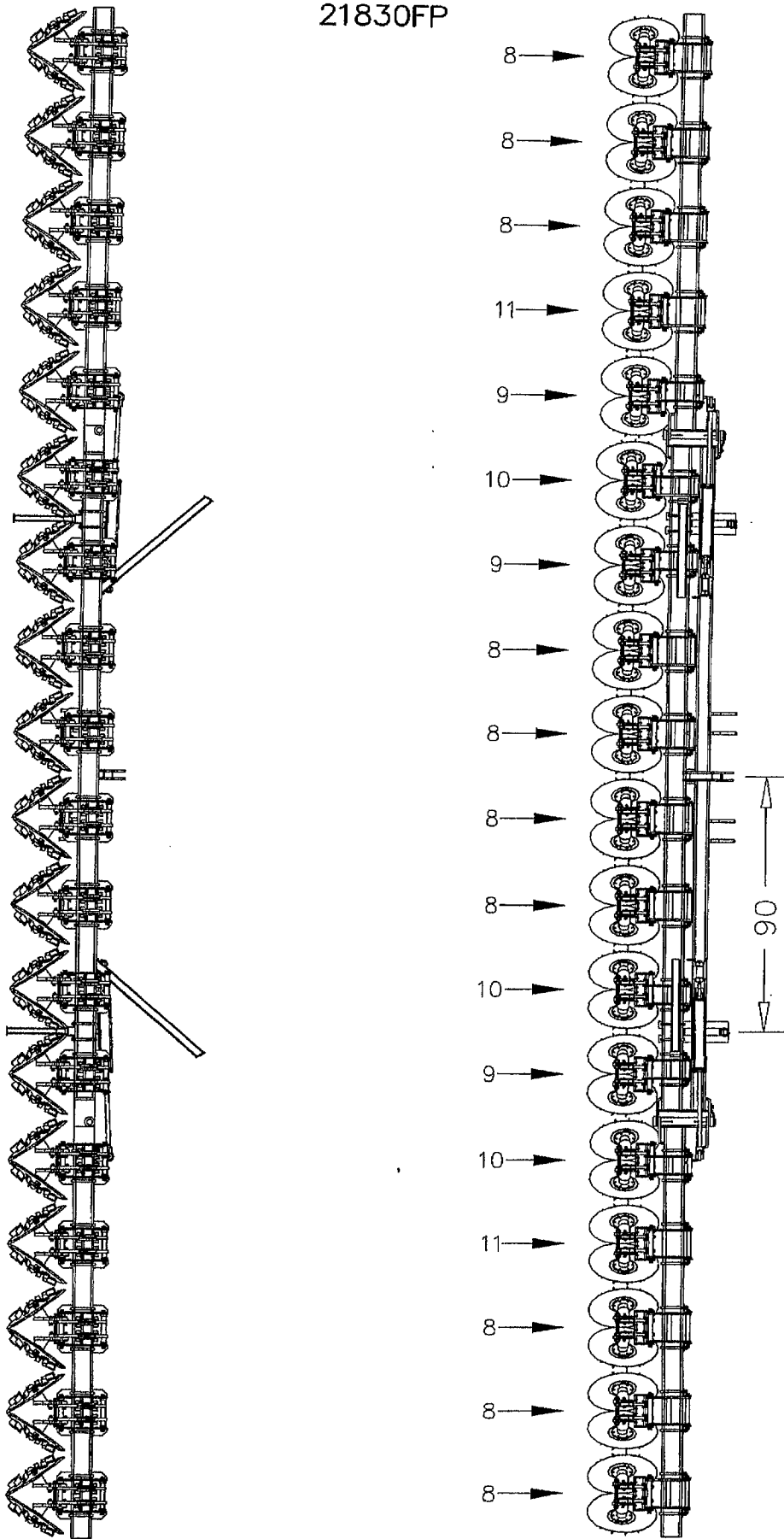
Dwg. No. 11219

REF. NO.	PART NUMBER	DESCRIPTION	No. REQ'D	REF. NO.	PART NUMBER	DESCRIPTION	No. REQ'D
1	90110	BOLT 1"NC x 4-3/8"	1	3	90113	HITCH PIN CAT. 2 & 3	2
	90109	TOP LINK BUSHING	1	4	11064	TOOL BAR	1
	90128	WASHER 1" FLAT	2	5	10384	STAND COMPLETE	2
	90111	NUT 1"NC DEFORMED	1	6	11039	PARALLEL LINKAGE ROW UNIT COMPLETE	8
2	90115	LYNCH PIN 7/16 x 1-1/2	2				

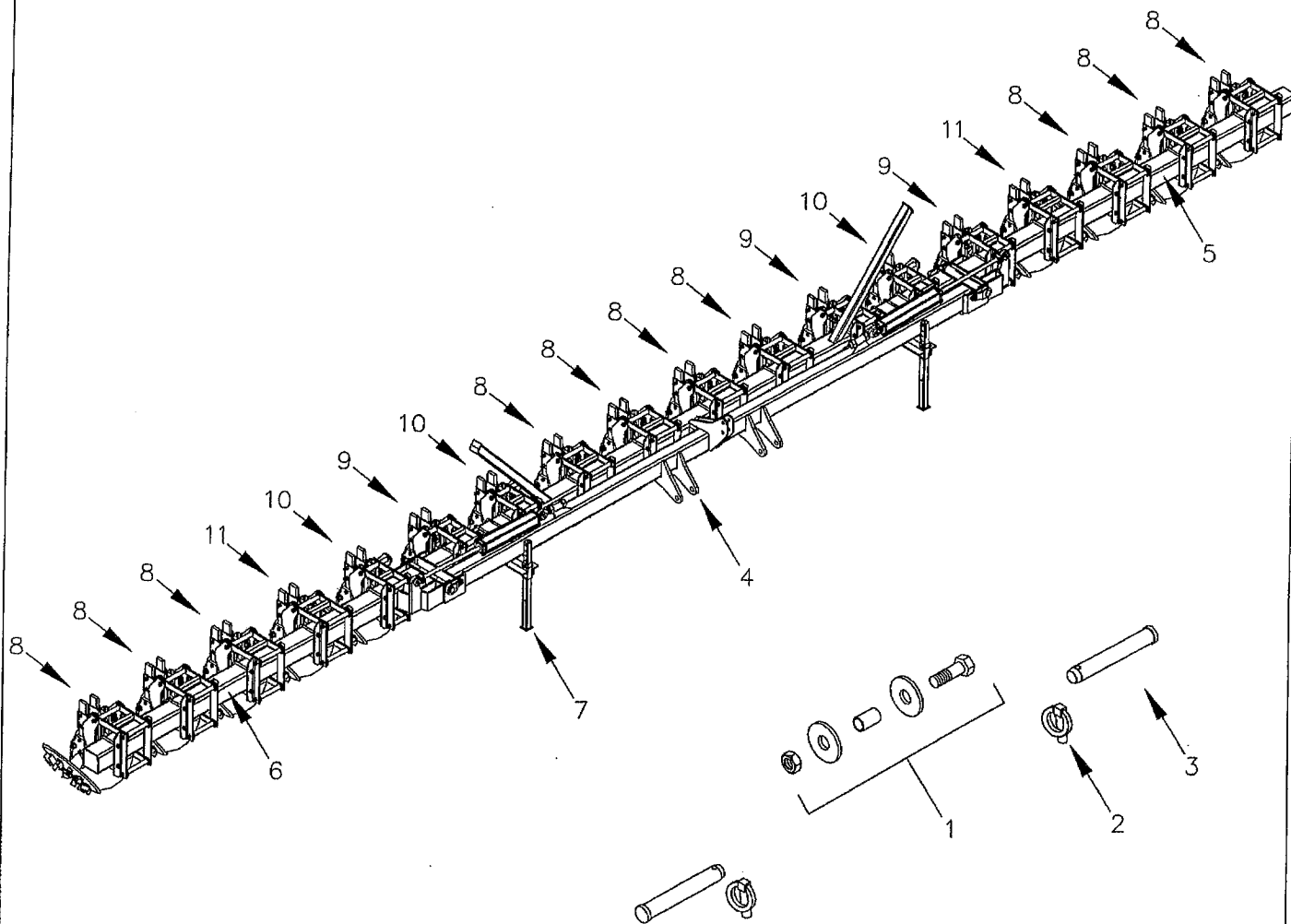
21230RP



21830FP



21830FP



Dwg. No. 11253

REF. NO.	PART NUMBER	DESCRIPTION	No. REQ'D	REF. NO.	PART NUMBER	DESCRIPTION	No. REQ'D
1	90110	BOLT 1"NC x 4-3/8"	1	5	11079	WING TOOLBAR - LEFT	1
	90109	TOP LINK BUSHING	1	6	11079	WING TOOLBAR - RIGHT	1
	90128	WASHER 1" FLAT	2	7	10384	STAND	2
	90111	NUT 1"NC DEFORMED	1	8	11039	PARALLEL ROW UNIT	10
2	90115	LYNCH PIN 7/16 x 1-1/2	2	9	11041	PARALLEL ROW UNIT - RIGHT OFFSET	3
3	90114	HITCH PIN CAT. 3	2	10	11043	PARALLEL ROW UNIT - LEFT OFFSET	3
4	11070	TOOL BAR	1	11	11045	PARALLEL ROW UNIT - 2" OFFSET	2



# BESLER INDUSTRIES, INC.

## BESLER TILLAGE EQUIPMENT TWO YEAR LIMITED WARRANTY

### STATEMENT OF WARRANTY

#### (1) WHAT IS COVERED BY THIS WARRANTY:

Besler Industries, Inc. warrants to the original retail purchaser only, that all equipment, parts and accessories which it manufactures are free from defects in material or workmanship under normal use, service, proper setup and adjustment. The duration of this warranty is two (2) years from date of delivery with some limitations on specific parts as mentioned below.

This warranty is limited to repair or replacement of part or parts, to the original purchaser, found by the manufacturer, through the authorized selling dealer, to be defective in material or workmanship in the warranty period. This warranty shall be effective only when the part or parts have been authorized for return or replacement by Besler Industries, Inc., and returned prepaid by the dealer or purchaser to Besler Industries, Inc. Consult your dealer before removing any parts or making repair. For warranty claim, notify the selling dealer.

#### (2) WHAT IS NOT COVERED BY THIS WARRANTY:

Besler Industries, Inc., does not warranty: (a) damage caused by use for purposes other than those for which it was designed; (b) repairs made by unauthorized persons; (c) damage caused by neglect, abuse, abnormal use, improper or unreasonable use, accident, or misuse; (d) damages caused by unauthorized attachments, alterations, or modifications; (e) damage caused by improper service, setup or adjustments; (f) Besler Equipment which has had serial numbers removed or made illegible; (g) normal wear; (h) transportation to and from authorized dealer's place of business or Besler Industries, Inc.

#### (3) LIMITATIONS TO WARRANTY

The following parts are covered under the original warranty for the specified time indicated by each item.

Two (2) Years from time of purchase:

Structure and Welds

One (1) Year from time of purchase:

Cylinders, Hoses, Bearings.

\*Warranty on merchandise not of Besler Industries, Inc., supplied in piece, or in component assemblies will be dependant on the manufactures warranty, some limitations may apply.

#### (4) DISCLAIMER OF WARRANTY:

The foregoing warranties are in lieu of all other warranties of merchantability and fitness for a particular purpose. Any implied warranty of merchantability or fitness for a particular purpose is limited to the duration of this limited warranty. This warranty gives you specific legal rights, and you may also have other rights which vary from state to state.

(5) Besler Industries, Inc. reserves the right to improve products through modifications and changes in design or material without being obligated to incorporate such changes in prior manufacture.

#### (6) WARRANTY REGISTRATION:

The Warranty registration card must be completed and forwarded to Besler Industries, Inc., Box B, Cambridge, NE 69022. Within 10 days following date of purchase. Warranty will not be granted unless a warranty card is on file at Besler Industries, Inc. The date of purchase constitutes delivery.

\* Effective 6/01/02