

# 2000 bale loader with ELECTRIC-HYDRAULIC

REF. NO.	PART NO.	DESCRIPTION	NO. REQ'D
56	----	BOLT (5/8" x 2-1/2" NC, HEX) .....	2
57	----	WASHER (5/8" LOCK) .....	2
58	----	NUT (5/8" NC, HEX) .....	2
59	----	BOLT (1/2" x 1-1/2" NC, HEX) .....	2
60	----	WASHER (1/2" LOCK) .....	2
61	----	NUT (1/2" NC, HEX) .....	2
HOSE 1	4M1T-4MP-4MPX-32.18	HYDRAULIC HOSE ASSEMBLY .....	1
HOSE 2	4M1T-4MP-4MPX-27.68	HYDRAULIC HOSE ASSEMBLY .....	1
HOSE 3	4M1T-4MP-4MPX-47.68	HYDRAULIC HOSE ASSEMBLY .....	1
HOSE 4	4M1T-4MP-4MPX-42.68	HYDRAULIC HOSE ASSEMBLY .....	1
HOSE 5	4M1T-4MP-4MPX-32.18	HYDRAULIC HOSE ASSEMBLY .....	1
HOSE 6	4M1T-4MP-4MPX-27.68	HYDRAULIC HOSE ASSEMBLY .....	1
HOSE 7	4M1T-4MP-4MPX-47.68	HYDRAULIC HOSE ASSEMBLY .....	1
HOSE 8	4M1T-4MP-4MPX-42.68	HYDRAULIC HOSE ASSEMBLY .....	1
HOSE 9	4M1T-6MB-4MPX-15.64	HYDRAULIC HOSE ASSEMBLY .....	1
HOSE 10	4M1T-6MB-4MPX-17.64	HYDRAULIC HOSE ASSEMBLY .....	1
HOSE 11	4M1T-6MB-4MPX-15.64	HYDRAULIC HOSE ASSEMBLY .....	1
HOSE 12	4M1T-6MB-4MPX-17.64	HYDRAULIC HOSE ASSEMBLY .....	1
HOSE 13	4M1T-4MP-6MB-14.74	HYDRAULIC HOSE ASSEMBLY .....	1
HOSE 14	4M1T-4MP-6MB-14.74	HYDRAULIC HOSE ASSEMBLY .....	1

## MOUNTING INSTRUCTIONS

REMOVE FLAT-BED FROM VEHICLE.

MAKE A LINE FROM THE FRONT MIDDLE OF THE FLAT-BED TO THE BACK MIDDLE OF THE FLAT-BED. THIS IS THE CENTER LINE.

CUT A HOLE IN THE FLAT-BED 30-1/2" WIDE, 13-7/8" LONG AND 3-3/4" FROM THE BACK AND CENTERED ON THE CENTER LINE.

CUT TWO 2" DIAMETER HOLES 4-3/4" FROM THE BACK OF THE FLAT-BED AND 73" APART (36-1/2" EACH SIDE OF THE CENTER LINE).

MOUNT FLAT-BED ON VEHICLE AS INSTRUCTED WITH FLAT-BED.

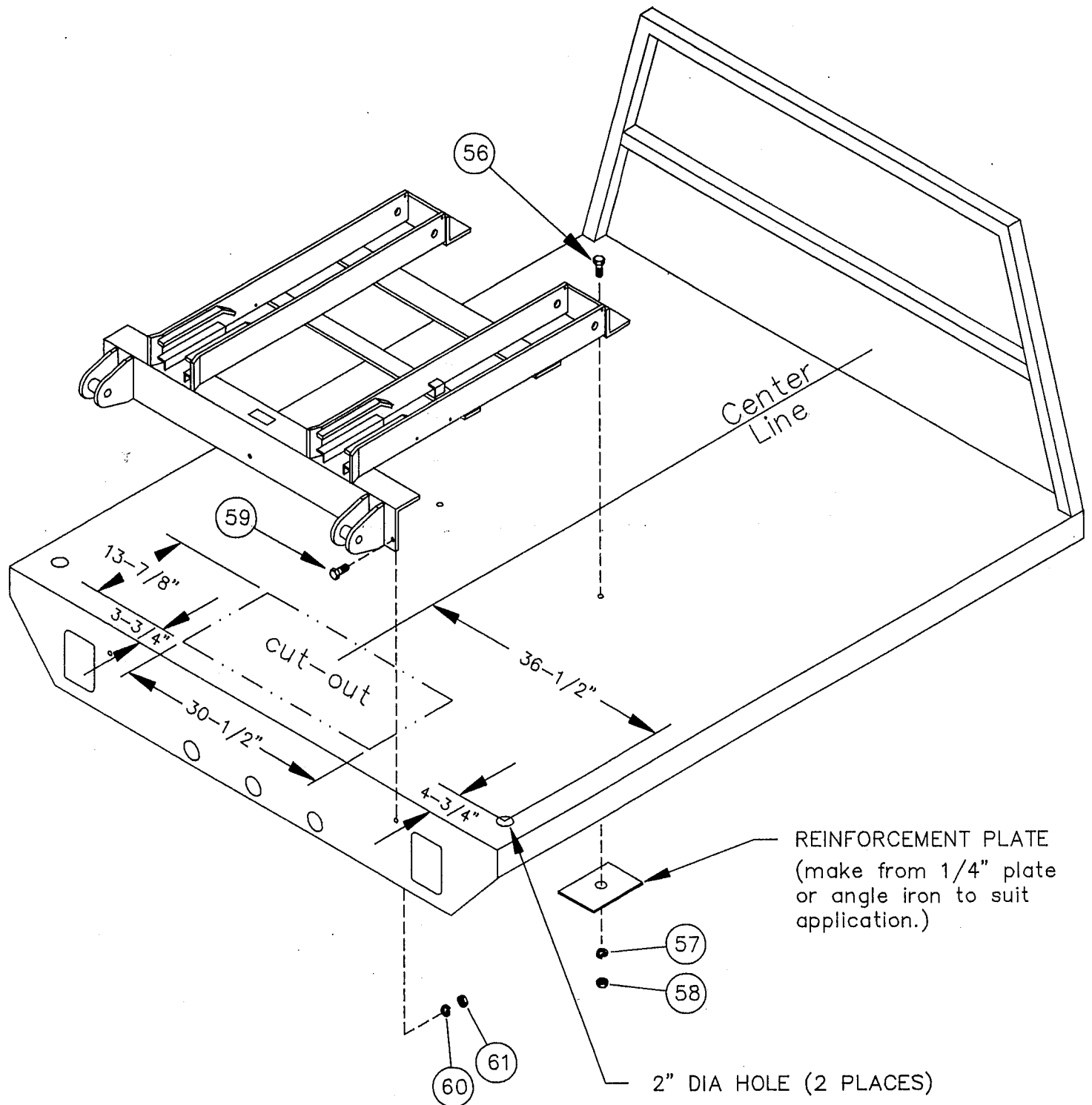
MOUNT 2000 BALE LOADER SO THAT THE LOADER ARMS ARE TOWARD THE FRONT AND HYDRA PAN FITS IN THE 30-1/2" X 13-7/8" CUT-OUT.

DRILL THE TWO 1/2" AND TWO 5/8" HOLES IN THE FLAT-BED NOW LOCATED BY THE MAIN FRAME.

BOLT DOWN AS SHOWN PER ILLUSTRATION.

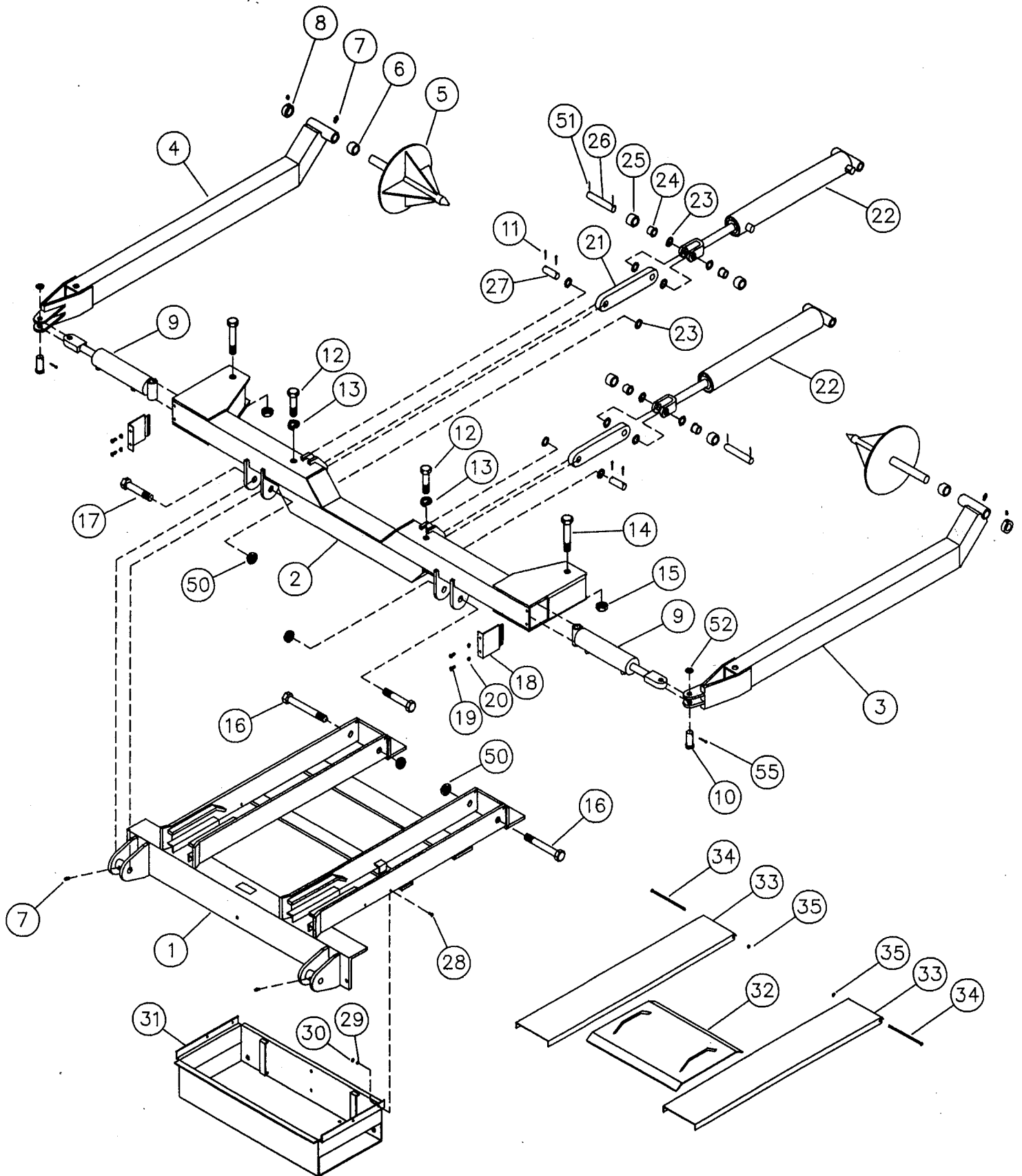
NOTE: REINFORCEMENT PLATES ARE TO BE MADE BY CONSUMER.

# 2000 bale loader with ELECTRIC-HYDRAULIC



Besler Industries, Inc.  
P.O. BOX B CAMBRIDGE, NEBRASKA 69022  
(308) 697-4698

# 2000 bale loader with ELECTRIC-HYDRAULIC



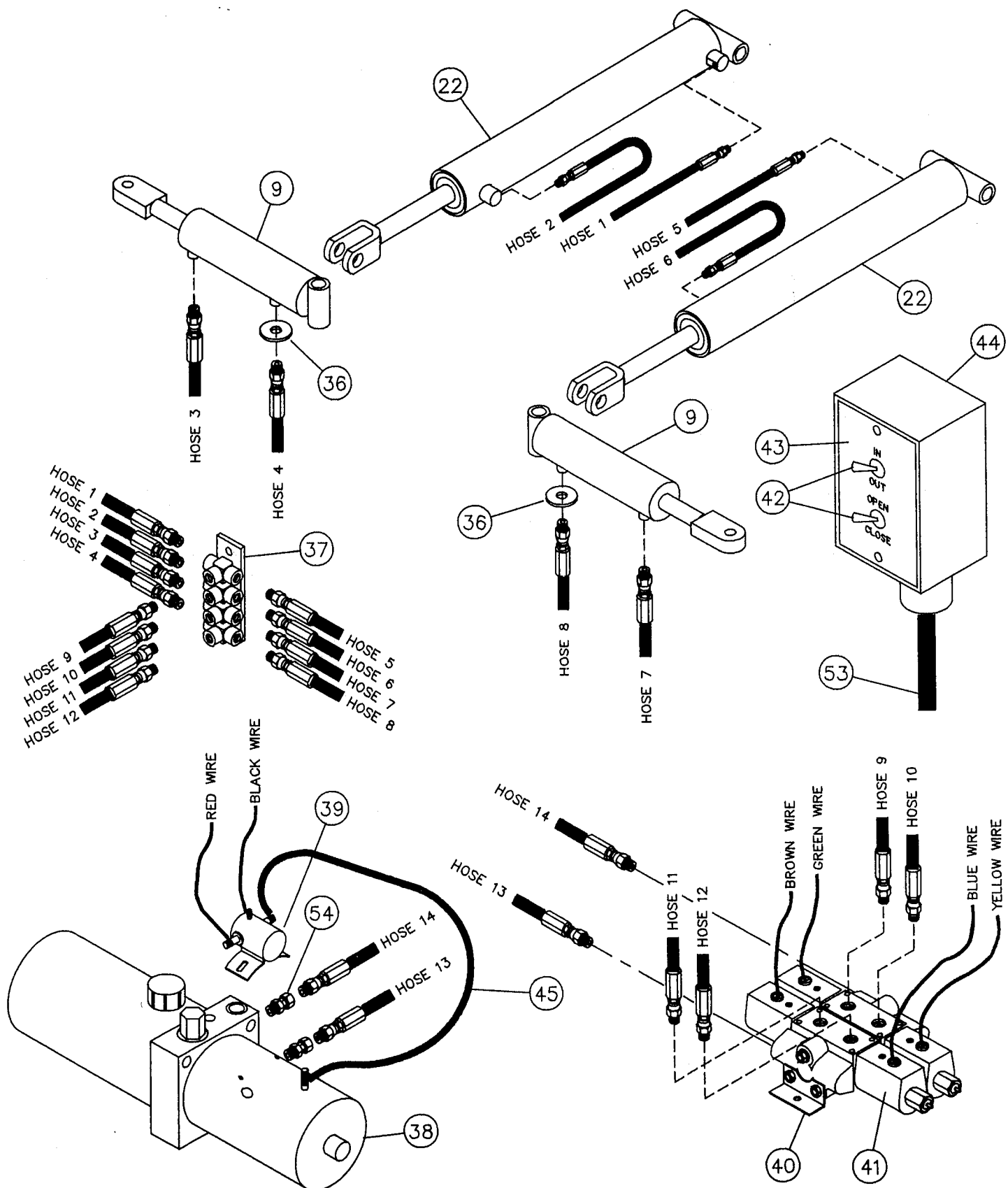
Besler Industries, Inc.  
P.O. BOX B CAMBRIDGE, NEBRASKA 69022  
(308) 697-4698

# 2000 bale loader with ELECTRIC-HYDRAULIC

REF. NO.	PART NO.	DESCRIPTION	NO. REQ'D
1	2000-01	MAIN FRAME.....	1
2	2000-02	CROSS ARM FRAME.....	1
3	2000-03-R	BALE LOADER ARM (RIGHT).....	1
4	2000-04-L	BALE LOADER ARM (LEFT).....	1
5	2000-05	UNROLLING SPOOL.....	2
6	2000-06	SPACER (1-1/4" ID x 1-3/4" OD x 1").....	2
7	----	GREASE FITTING (1/4" DRIVE ON).....	4
8	----	SET COLLAR 1-1/4" (INCLUDE SET SCREW).....	2
9	2000-09	HYDRAULIC CYLINDER (2-1/2" x 4-1/2").....	2
10	3/4 X 2-1/2 ZN	CLEVIS PIN (3/4" x 2-1/2").....	2
11	----	COTTER PIN (3/16" x 1-1/2" LONG).....	4
12	----	BOLT (1" x 6" NC, HEX).....	2
13	----	WASHER (1", LOCK).....	2
14	2000-14	BOLT (1" x 5-3/8" NC, HEX)(7-1/2" CUT TO 5-3/8").....	2
15	2000-15	NUT (1" NC, JAM LOCK).....	2
16	----	BOLT (1" x 7-1/2" NC, HEX).....	2
17	2000-17	BOLT (1" x 5-1/8" NC, HEX)(1" x 7" CUT TO 5-1/8").....	2
18	2000-18	END CAP.....	2
19	----	BOLT (5/16" x 3/4" NC, HEX).....	4
20	----	WASHER (5/16" LOCK).....	4
21	2000-21	FLOAT ARM.....	2
22	2000-22	HYDRAULIC CYLINDER (3" x 20").....	2
23	2000-23	MACHING BUSHING (1" ID x 1-1/2" OD x .037 THICK).....	12
24	16 FT-16	FLANGED NYLON BEARING (1" ID x 1-1/4" OD x 1").....	4
25	2000-25	ROLLER (1-1/4" ID x 1-3/4" OD x 1").....	4
26	2000-26	HEADLESS PIN (1" x 5-1/2").....	2
27	2000-27	HEADLESS PIN (1" x 2-3/4").....	2
28	----	BOLT (1/4" x 1" NC, HEX).....	4
29	----	WASHER (1/4" LOCK).....	4
30	----	NUT (1/4" NC, HEX).....	4
31	2000-31	HYDRA PAN.....	1
32	2000-32	HYDRA LID.....	1
33	2000-33	CYLINDER LID.....	2
34	2000-34	BOLT (1/4" x 7-3/8" NC, HEX)(8" CUT TO 7-3/8").....	2
35	----	NUT (1/4" NC, LOCK).....	2
36	----	WASHER (1/2" FLAT).....	2
37	2000-37	HYDRA BLOCK.....	1
38	2000-38	ELECTRIC POWER UNIT 12 VOLT.....	1
39	2000-39	SOLENOID (STARTER).....	1
40	2000-40	MINI PACK VALVE 9 VOLT.....	1
41	2000-41	SOLENOID (MINI PACK VALVE).....	4
42	2000-42	TOGGLE SWITCH.....	2
43	2000-43	SWITCH PLATE.....	1
44	2000-44	CONTROL BOX.....	1
45	2000-45	#2 CABLE 9" LONG.....	1
46	----	BOLT (3/8" x 3/4" NC, HEX).....	3
47	----	BOLT (3/8" x 1" NC, HEX).....	3
48	----	WASHER (3/8" LOCK).....	6
49	----	NUT (3/8" NC, HEX).....	3
50	----	NUT (1" NC, LOCK).....	4
51	----	ROLL PIN (1/4" x 1-1/2").....	4
52	2000-52	MACHINE BUSHING (3/4" ID x 1-1/4" OD).....	2
53	6-16 X 14 FT	CONTROL CORD (14 FT.).....	1
54	6MB-4FPX	ADAPTOR.....	2
55	----	COTTER PIN (5/32" x 1").....	2

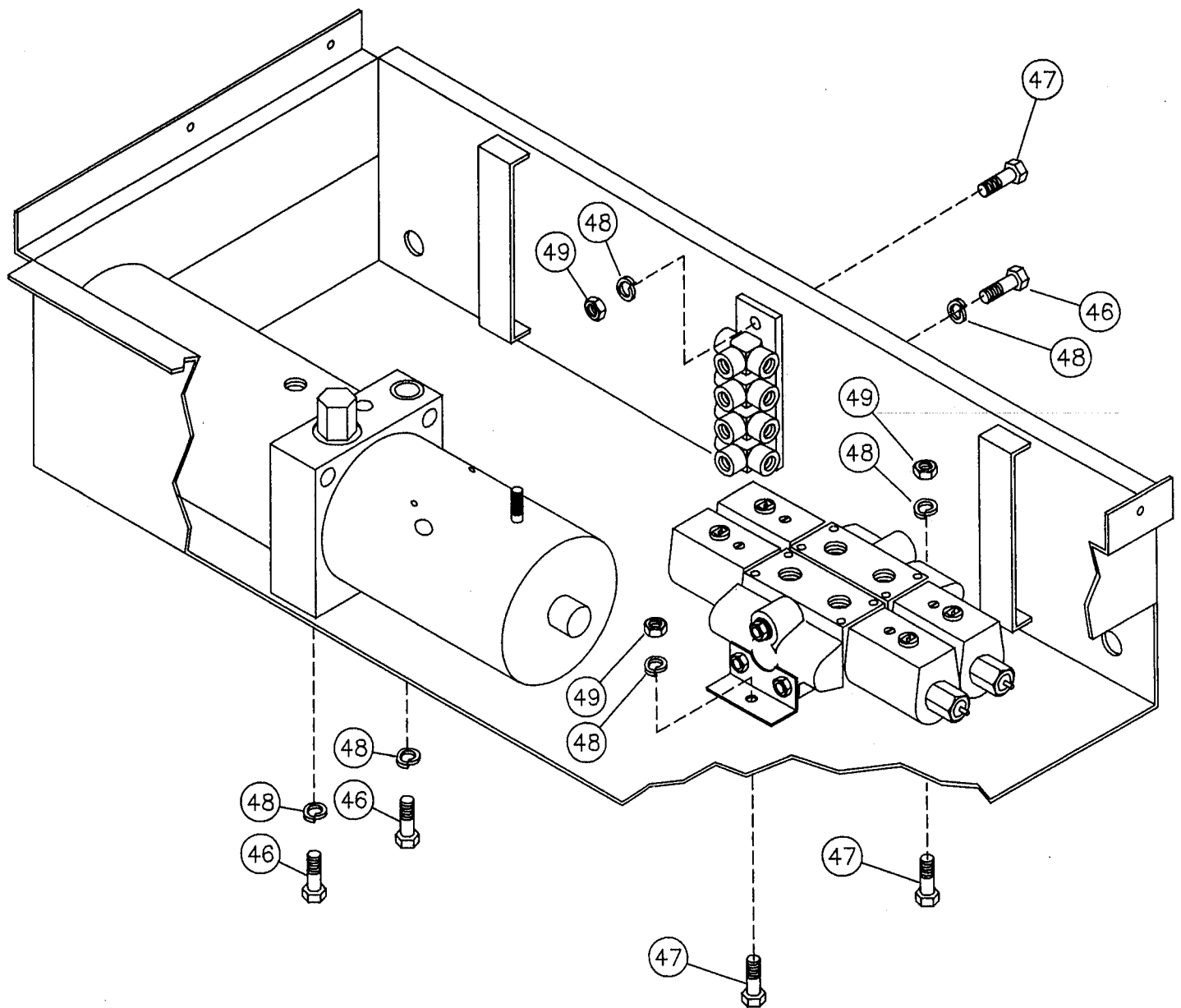
Besler Industries, Inc.  
P.O. BOX B CAMBRIDGE, NEBRASKA 69022  
(308) 697-4698

# 2000 bale loader with ELECTRIC-HYDRAULIC



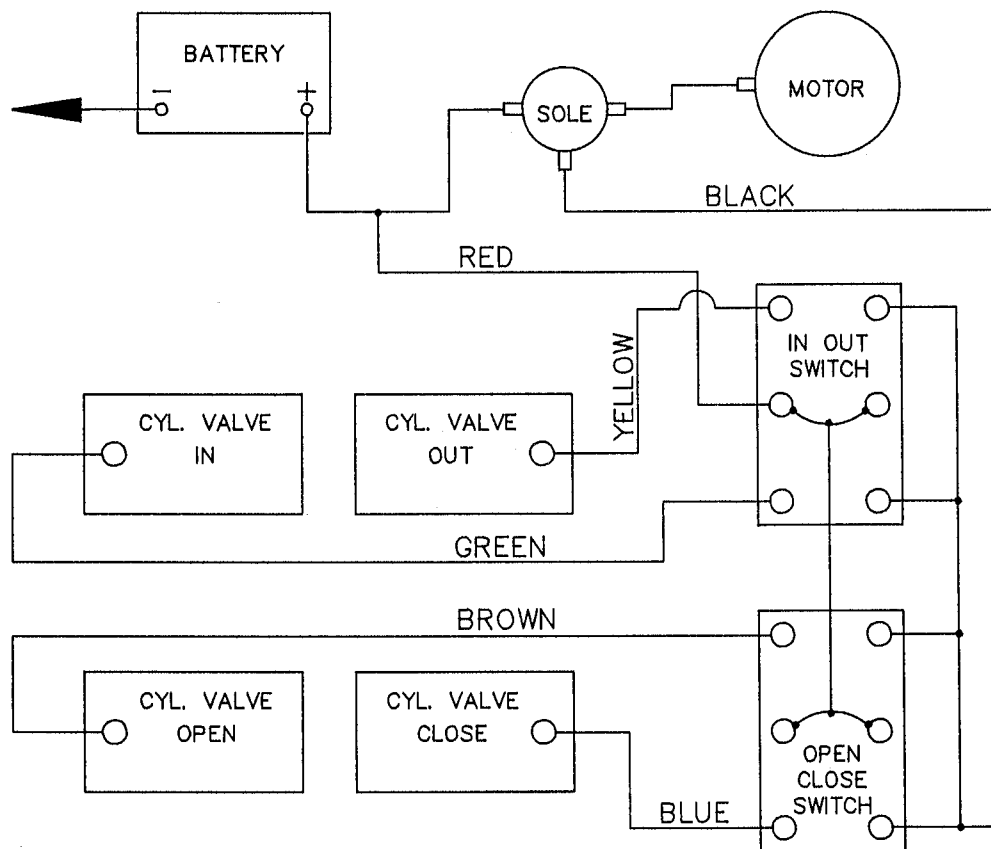
Besler Industries, Inc.  
P.O. BOX B CAMBRIDGE, NEBRASKA 69022  
(308) 697-4698

# 2000 bale loader with ELECTRIC-HYDRAULIC



Besler Industries, Inc.  
P.O. BOX B CAMBRIDGE, NEBRASKA 69022  
(308) 697-4698

# 2000 bale loader with ELECTRIC-HYDRAULIC



Besler Industries, Inc.  
P.O. BOX B CAMBRIDGE, NEBRASKA 69022  
(308) 697-4698

# BESLER INDUSTRIES, INC.

## BESLER BALE BED & BALE UNROLLER TWO YEAR LIMITED WARRANTY

### STATEMENT OF WARRANTY

#### (1) WHAT IS COVERED BY THIS WARRANTY:

Besler Industries, Inc. warrants to the original retail purchaser only, that all equipment, parts and accessories which it manufactures are free from defects in material or workmanship under normal use, service, proper setup and adjustment. The duration of this warranty is two (2) years from date of delivery with some limitations on specific parts as mentioned below.

This warranty is limited to repair or replacement of part or parts, to the original purchaser, found by the manufacturer, through the authorized selling dealer, to be defective in material or workmanship in the warranty period. This warranty shall be effective only when the part or parts have been authorized for return or replacement by Besler Industries, Inc., and returned prepaid by the dealer or purchaser to Besler Industries, Inc. Consult your dealer before removing any parts or making repair. For warranty claim, notify the selling dealer.

#### (2) WHAT IS NOT COVERED BY THIS WARRANTY:

Besler Industries, Inc., does not warranty: (a) damage caused by use for purposes other than those for which it was designed; (b) repairs made by unauthorized persons; (c) damage caused by neglect, abuse, abnormal use, improper or unreasonable use, accident, or misuse; (d) damages caused by unauthorized attachments, alterations, or modifications; (e) damage caused by improper service, setup or adjustments; (f) Besler Equipment which has had serial numbers removed or made illegible; (g) normal wear; (h) transportation to and from authorized dealer's place of business or Besler Industries, Inc.

#### (3) LIMITATIONS TO WARRANTY

The following parts are covered under the original warranty for the specified time indicated by each item.

Two (2) Years from time of purchase:

Structure and Welds

One (1) Year from time of purchase:

Cylinders, Valves, Pump, Hydraulic Hoses, Electric Motor

Warning: Low Voltage and/or running motor continuously for excessive periods of time may result in motor damage. This is considered misuse and will not be covered by the manufacturer.

Six (6) Months from time of purchase:

Paint, Wear Plates, Toggle Switches

\*Warranty on merchandise not of Besler Industries, Inc., supplied in piece, or in component assemblies will be dependant on the manufactures warranty, some limitations may apply.

#### (4) DISCLAIMER OF WARRANTY:

The foregoing warranties are in lieu of all other warranties of merchantability and fitness for a particular purpose. Any implied warranty of merchantability or fitness for a particular purpose is limited to the duration of this limited warranty. This warranty gives you specific legal rights, and you may also have other rights which vary from state to state.

(5) Besler Industries, Inc. reserves the right to improve products through modifications and changes in design or material without being obligated to incorporate such changes in prior manufacture.

#### (6) WARRANTY REGISTRATION:

The Warranty registration card must be completed and forwarded to Besler Industries, Inc., Box B, Cambridge, NE 69022. Within 10 days following date of purchase. Warranty will not be granted unless a warranty card is on file at Besler Industries, Inc. The date of purchase constitutes delivery.

\* Effective 6/01/02