



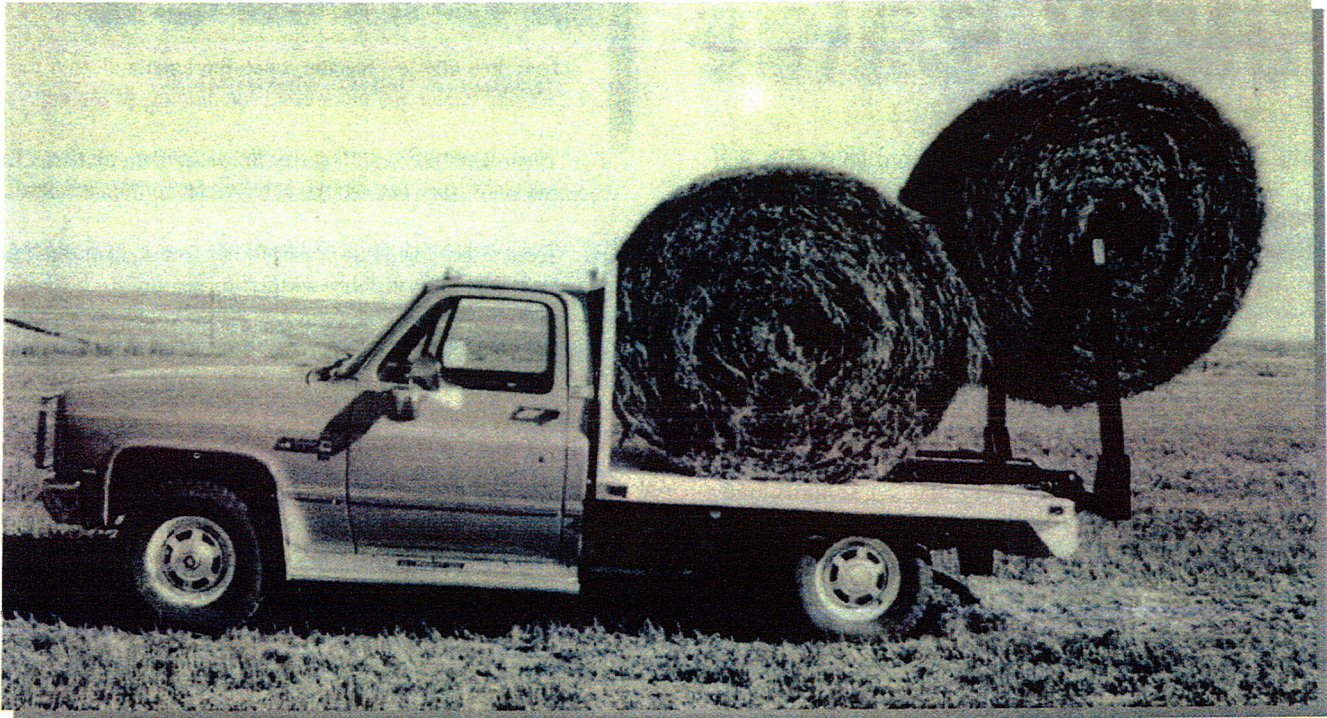
P.O. BOX B • CAMBRIDGE, NEBRASKA 69022
PHONE: (308)697-4698 • FAX: (308)697-4747

FITS MOST ANY FLAT BED

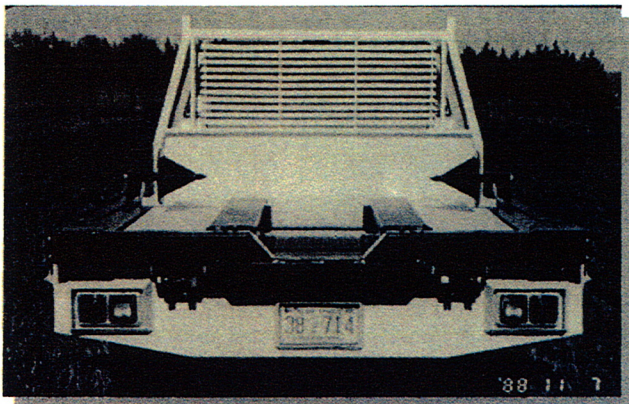
2000



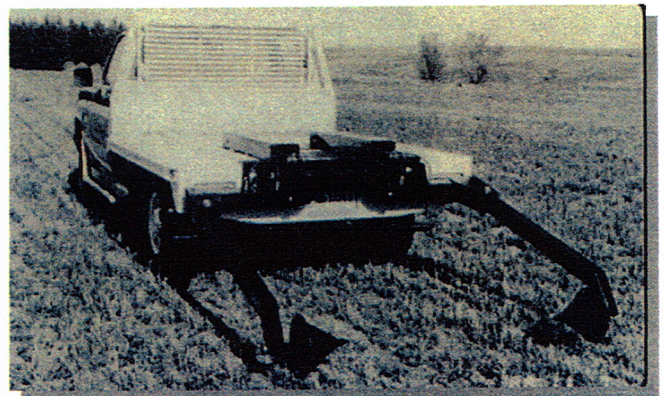
**Bale
Loader**



**Put a Bale Loader on your own Flat Bed
without buying another Flat Bed.**



- Loads and carries one or two bales
- Unloads them both, one at a time
- Unloads bale into feed rack
- Unrolls bale on the ground



- Loads bale onto trucks or trailers
- Will pick up bale from ends or sides
- Electric-Hydraulic powered
- Operates from pickup cab



**easy to
load unload
unroll
carry bales**

2000 Bale Loader

"QUALITY CRAFTSMANSHIP"

Mounting the Besler Bale Loader on your Flat Bed requires approximately 2 hours.

The low profile lets you hook up to your Gooseneck Trailer without having to raise it up higher than normal.

For "controlled feeding," the bale loader is the ticket. Unroll only the amount of hay needed, then move on to the next herd.

For "free choice" feeding, open the arms and drop the bale into the feeder without leaving the comfort of the cab.

When it comes to storing hay for the winter, your bale loader will stack bales two high to help you store more in less space.

When moving large quantities of hay over long distances, just load you truck or trailer using the bale loader. Then put two more bales on your pickup. You do the job faster and use less gas than with the tractor and loader method.

SPECIFICATIONS

Weight Approximately 850 lbs.
Lifting Capacity 2,000 lbs.

Constructed of Heavy 4 inch Square Tubing
12 Volt Electric Hydraulic Pump

Frame Width 46 Inches
Total Width 78 Inches

Standard Equipment:

Requires a 14" x 30" hole cut out for the 12 Volt electric Hydraulic Pan.

Optional:

Under-the-Hood Power Unit



better

built by _____



P.O. BOX B • CAMBRIDGE, NE 69022
PHONE: (308)697-4698
FAX: (308)697-4747
www.beslerindustries.com